



UNIQUE  
**LEGACY**  

---

**REGAL**

2 & 3 BHK HOMES



# THE STAGE IS SET FOR A REGAL MASTERPIECE

After delivering thriving residential projects like Grand, Majestic, and Royal one after the other, Unique Properties has envisioned another landmark residential venture in Keshav Nagar. The Group carries the same strong commitment towards exceeding customers' expectations with superior infrastructure quality and lifestyle amenities to live up to those high aspirations. In line with our brand philosophy, each one of these projects stands testimony to the unwavering commitment in delivering only the best to their customers. Get ready to welcome another milestone of Unique Legacy – REGAL!

CONCEPTUAL IMAGE



LIFESTYLE:  
REIMAGINED



UNIQUE  
**LEGACY**  
REGAL

Nestled in a beautiful landscaped setting, in the heart of Keshav Nagar, Unique Properties brings you its latest **Legacy milestone – Regal**. True to its name, **Unique Legacy - Regal** promises a royal experience loaded with all the comforts and modern embellishments.

Come, explore a Regal affair!



# DESIGNED FOR A REGAL EXPERIENCE

Experience more than just a place you call home – enjoy magnificence and royalty in every corner!

---

#### Spacious 2 & 3 BHK Homes

Homes Inspired by a royal lifestyle, **Unique Legacy - Regal** offers spacious residences; a home that is ideal for evolving needs and growing families.

---

#### Regal Recreation

With regal amenities and comforts, living here is truly Remarkable. **Unique Legacy - Regal** ensures that you enjoy a spread of exciting amenities without having to step out.

---

#### A Class Apart

Every home at **Unique Legacy - Regal** is beautifully designed with luxurious finishes, thoughtful planning and modern facilities. Needless to say, a truly royal experience awaits you.



# LEGEND

1. DESIGNER ENTRANCE GATE WITH SECURITY CABIN
2. TREMIX INTERNAL ROAD
3. OPEN AIR YOGA/MEDITATION AREA
4. OPEN AIR GYMNASIUM
5. GAZEBO
6. INDOOR GYMNASIUM
7. INFINITY POOL ON TOP TERRACE
8. WOODEN FINISH PERGOLA WITH SETOUTS
9. PROJECTOR WITH SCREEN AREA
10. LANDSCAPE GARDEN WITH SENIOR CITIZEN SETOUTS
11. OUTDOOR PARTY AREA
12. MULTIPURPOSE HALL WITH PANTRY
13. INDOOR GAMES AREA
14. CRECHE / DAYCARE
15. RUBBER FLOORING CHILDREN PLAY AREA WITH EQUIPMENT



**ENTER  
THE  
REGAL  
LIFE!**

LIFE:  
ENHANCED

## REGAL HIGHLIGHTS:

- 🌀 Kitchen trolley with Chimney, Cook top & Overhead cabinet
- 🌀 Fan & Tube light in Kitchen, Living room & Bedrooms
- 🌀 Water Purifier in Kitchen
- 🌀 Smart lock with Biometric access for main door
- 🌀 Video Door Phone for Each Flat
- 🌀 Laminated Wooden flooring in Master Bedroom
- 🌀 Limited Gen set Backup inside flats.

# ROOFTOP AMENITIES

ARTISTIC IMPRESSION



OUTDOOR PARTY AREA



# ROOFTOP AMENITIES

ARTISTIC IMPRESSION



CHILDREN'S PLAY AREA

# ROOFTOP AMENITIES

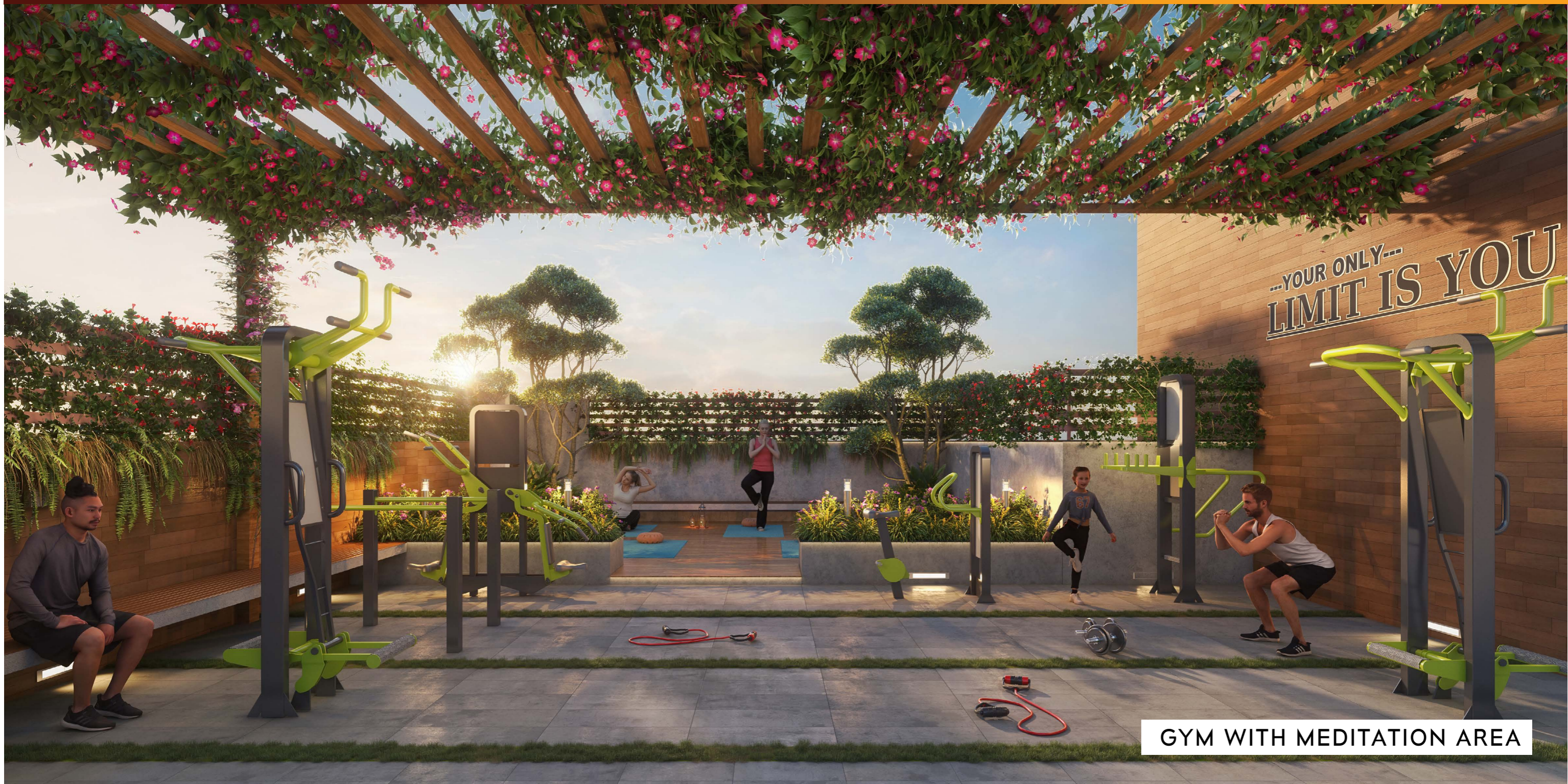
ARTISTIC IMPRESSION



INFINITY POOL

# ROOFTOP AMENITIES

ARTISTIC IMPRESSION



GYM WITH MEDITATION AREA

# ROOFTOP AMENITIES

ARTISTIC IMPRESSION



CRECHÉ AREA

# ROOFTOP AMENITIES

ARTISTIC IMPRESSION



INDOOR GYM

MULTIPURPOSE HALL



ARTISTIC IMPRESSION

MINI THEATER



ARTISTIC IMPRESSION

LANDSCAPE GARDEN



ARTISTIC IMPRESSION

# THE REGAL AMENITIES

## COMMON AMENITIES

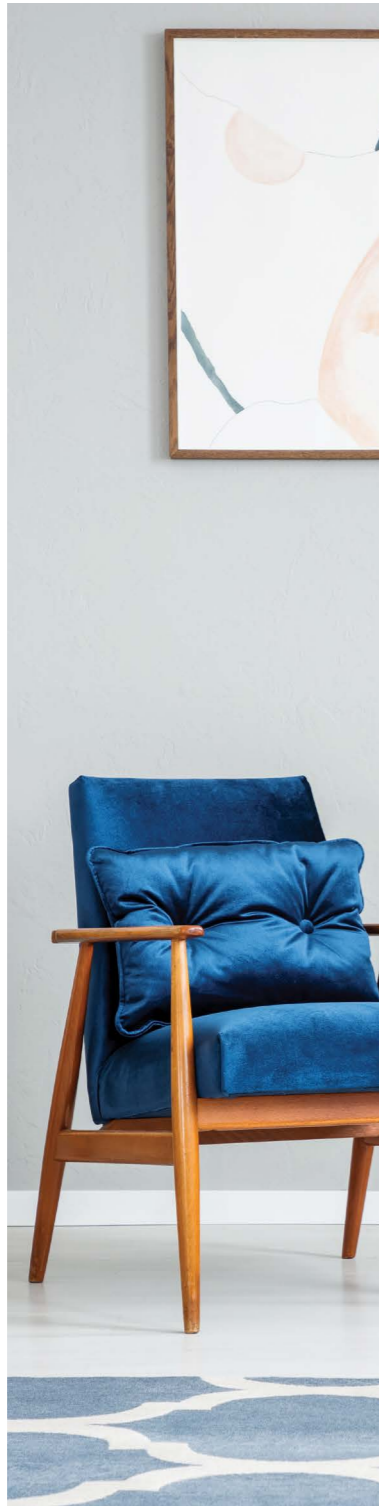
- Designer Lobby
- Tremix Internal Road
- Autodoor Lifts with Genset backup
- Genset backup for common areas
- Sewage Treatment Plant (STP)
- Rainwater Harvesting
- Piped Gas System

## ROUND-THE-CLOCK SECURITY

- Designer Entrance Gate with Security Cabin
- CCTV Cameras in Common Areas
- Video door phone in flats
- Fire-fighting systems
- Smart lock with Biometric access for main door

## TOP TERRACE AMENITIES

- Lift Access to Top Terrace
- Infinity Pool on Top Terrace
- Landscape Garden with Senior Citizen Setouts
- Open Air Gymnasium
- Multipurpose Hall with Pantry
- Outdoor Party Area
- Projector with screen Area
- Wooden Finish Pergola with Setouts
- Indoor Gymnasium
- Gazebo
- Open Air Yoga/Meditation Area
- Hammock Area
- Rubber Flooring Children Play Area with Equipment
- Creche / Daycare
- Indoor Games Area
- Workstation with wifi
- Society Office



# SPECIFICATIONS

## 🌀 MASONRY

- Sand Finish External Plaster
- Gypsum Finish Internal Walls
- AAC Blocks Masonry

## 🌀 FLOORING

- Marble Finished Floor Tiles in Living Room, Bedrooms & Kitchen
- Designer Anti-skid Tiles in Toilets, Bathrooms, Terraces
- Designer Wall Tiles up to Ceiling Level in Toilets and Bathrooms
- Laminated Wooden flooring in Master Bedroom

## 🌀 KITCHEN

- Kitchen trolley with chimney, cook top & overhead cabinet
- Black Granite Platform with SS Sink
- Designer Dado Tiles up to Lintel Level
- Water Purifier in Kitchen
- Provision for Exhaust fan

## 🌀 TOILET

- CP & Sanitary fitting of Good Quality
- Provision for exhaust fan in bathrooms
- Solar heated water in all Bathrooms

## 🌀 DOORS & WINDOWS

- Smart lock with Biometric access for main door
- Laminated Flush Door
- Granite Door Frames in Toilets
- Powder Coated 3 track aluminum sliding windows with mosquito mesh
- MS grill for windows
- Granite window sill on all 4 sides

## 🌀 ELECTRIFICATION

- Concealed Copper Wiring
- Electrical switches of Good Quality
- Television point in Living & Master Bedroom
- Limited Gen-Set Back-Up within the Flat
- Fan & Tube lights in Kitchen, Living room & Bedrooms
- Video Door Phone for Each Flat
- AC Point in Master Bedroom

## 🌀 PAINT

- Oil Bound distemper in the entire flat
- Semi acrylic paint on external walls

# ABOUT THE ADDRESS

One of the most rapidly developing locales in East Pune, Keshav Nagar is becoming increasingly popular amongst IT professionals due to its excellent connectivity to leading IT & business hubs in Magarpatta, Kharadi & the neighbouring areas. Strategically located in Keshav Nagar, Unique Legacy is well-positioned to enjoy urban infrastructure, great recreational areas in close proximity and most importantly, a peaceful & secure neighbourhood of like-minded people.





## CREDITS:

Liasoning Architect : **Sandeep Hardikar & Associates**

RCC Designer : **EquiCom Structural Consultancy**

Legal Adviser : **Adv Chandrakant Nanekar**

Services Consultant : **Skyline MEP**

Adv & Designing : **Filament Communique**

A PROJECT BY:



**UNIQUE  
PROPERTIES**

It's all about you!

Site Address

Sr. No. 35 & 36, Opposite Renuka Mata Mandir, Keshav Nagar,  
Mundhwa, Pune - 411 036

Corporate Office

Office No. 7, 4th Floor, Amar Avinash Corporate City,  
Above HSBC Bank, Near Inox, Bund Garden Road, Pune - 411 001  
[www.uniqueproperties.in](http://www.uniqueproperties.in)

Email ID: [sales.legacy@uniqueproperties.in](mailto:sales.legacy@uniqueproperties.in) | Website: [www.uniqueproperties.in](http://www.uniqueproperties.in)

 **8007 44 55 66 | 7264 99 66 33**



MAHARERA REG. NO.: P52100045485 | <https://maharera.mahaonline.gov.in>

*Filament*

Disclaimer: The perspective images used may not be to scale or may not represent the actual facade/elevation. The details of windows, paints, elevation features, landscaping, ground development, trees or any other details in this perspective are an artist's impression and could be different to actual. The viewer affirms that he/she has not taken his/her decision of purchase/booking by viewing this perspective. This brochure is not a legal offering. The developers reserve absolute rights to change/cancel any plans, layouts, no. of floors and/or specifications at their discretion. Images are for representational purpose only.