



|| Mangalam ||

**DISHA**

**AT KIWALE**



Established in 1996, Wadhvani Constructions has become a leading enterprise in the business of developing properties and has transformed the suburb of Pimple Saudagar in Western Pune. Its value-based and honesty-driven policies, and its healthy business practices have earned the enterprise an unmatched reputation and customer confidence. Wadhvani Constructions with its inspiring track record showcases its exemplary residential as well as commercial projects of Pimple-Saudagar as it now focuses on transforming Punawale.



|| Mangalam ||

**DISHA**

## LEADING YOU TO YOUR DREAM LIFE

An addition to the magnificence of Om Mangalam premises, Disha brings to you thoughtfully planned 2 & 3 BHK homes.

With serene surroundings and a wide spread of amenities, Om Mangalam Disha is crafted to give you the lifestyle that you always wished for.

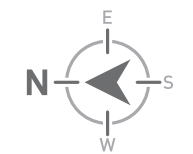
**2 BHK**  
**Upto ₹58 LAKH**

**3 BHK**  
**Upto ₹74 LAKH**

(ALL INCLUSIVE)



**GROUND FLOOR PLAN**



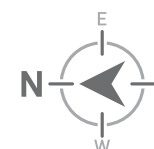
# TYPICAL FLOOR PLAN

## WING A



### AREA STATEMENT

FLAT NO.	TYPE	CARPET AREA	BALCONY (LIVING ROOM)	BALCONY (BED ROOM)	DRY BALCONY	TOTAL CARPET AREA (SQ.M)	CARPET AREA (SQ.FT) (ROUNDED)
201, 301, 401, 501, 601, 801, 901	3 BHK	79.82	7.04	2.36	2.09	91.31	983
202, 302, 402, 502, 602, 802, 902	2 BHK	60.50	6.60	2.36	2.09	71.54	770
203, 303, 403, 503, 603, 803, 903	2 BHK	60.50	6.53	2.43	2.09	71.54	770
204, 304, 404, 504, 604, 804, 904	3 BHK	79.82	6.98	2.43	2.09	91.31	983



### KEY PLAN



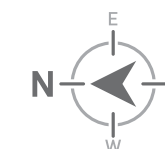
# TYPICAL FLOOR PLAN

## WING B



### AREA STATEMENT

FLAT NO.	TYPE	CARPET AREA	BALCONY (LIVING ROOM)	BALCONY (BED ROOM)	DRY BALCONY	TOTAL CARPET AREA (SQ.M)	CARPET AREA (SQ.FT) (ROUNDED)
201, 301, 401, 501, 601, 801, 901	3 BHK	79.82	7.04	2.36	2.09	91.31	983
202, 302, 402, 502, 602, 802, 902	2 BHK	60.50	6.60	2.36	2.09	71.54	770
203, 303, 403, 503, 603, 803, 903	2 BHK	60.50	6.53	2.43	2.09	71.54	770
204, 304, 404, 504, 604, 804, 904	3 BHK	79.82	6.98	2.43	2.09	91.31	983



### KEY PLAN



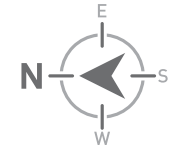
# TYPICAL FLOOR PLAN

## WING C



### AREA STATEMENT

FLAT NO.	TYPE	CARPET AREA	BALCONY (LIVING ROOM)	BALCONY (BED ROOM)	DRY BALCONY	TOTAL CARPET AREA (SQ.M)	CARPET AREA (SQ.FT) (ROUNDED)
201, 301, 401, 501, 601, 801, 901	3 BHK	79.82	7.04	2.36	2.09	91.31	983
202, 302, 402, 502, 602, 802, 902	2 BHK	60.50	6.60	2.36	2.09	71.54	770
203, 303, 403, 503, 603, 803, 903	2 BHK	60.50	6.53	2.43	2.09	71.54	770
204, 304, 404, 504, 604, 804, 904	3 BHK	79.82	6.98	2.43	2.09	91.31	983



### KEY PLAN



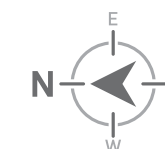
# REFUGE FLOOR PLAN

## WING A



### AREA STATEMENT

FLAT NO.	TYPE	CARPET AREA	BALCONY (LIVING ROOM)	BALCONY (BED ROOM)	DRY BALCONY	TOTAL CARPET AREA (SQ.M)	CARPET AREA (SQ.FT) (ROUNDED)
701	3 BHK	79.82	7.04	2.36	2.09	91.31	983
702	2 BHK	60.50	6.60	2.36	2.09	71.54	770
703	2 BHK	60.50	6.53	2.43	2.09	71.54	770
704	3 BHK	79.82	6.98	2.43	2.09	91.31	983



### KEY PLAN





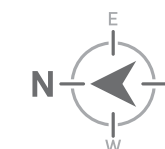
# REFUGE FLOOR PLAN

## WING B



### AREA STATEMENT

FLAT NO.	TYPE	CARPET AREA	BALCONY (LIVING ROOM)	BALCONY (BED ROOM)	DRY BALCONY	TOTAL CARPET AREA (SQ.M)	CARPET AREA (SQ.FT) (ROUNDED)
701	3 BHK	79.82	7.04	2.36	2.09	91.31	983
702	2 BHK	60.50	6.60	2.36	2.09	71.54	770
703	2 BHK	60.50	6.53	2.43	2.09	71.54	770
704	3 BHK	79.82	6.98	2.43	2.09	91.31	983



### KEY PLAN



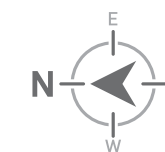
# REFUGE FLOOR PLAN

## WING C



### AREA STATEMENT

FLAT NO.	TYPE	CARPET AREA	BALCONY (LIVING ROOM)	BALCONY (BED ROOM)	DRY BALCONY	TOTAL CARPET AREA (SQ.M)	CARPET AREA (SQ.FT) (ROUNDED)
701	3 BHK	79.82	7.04	2.36	2.09	91.31	983
702	2 BHK	60.50	6.60	2.36	2.09	71.54	770
703	2 BHK	60.50	6.53	2.43	2.09	71.54	770
704	3 BHK	79.82	6.98	2.43	2.09	91.31	983

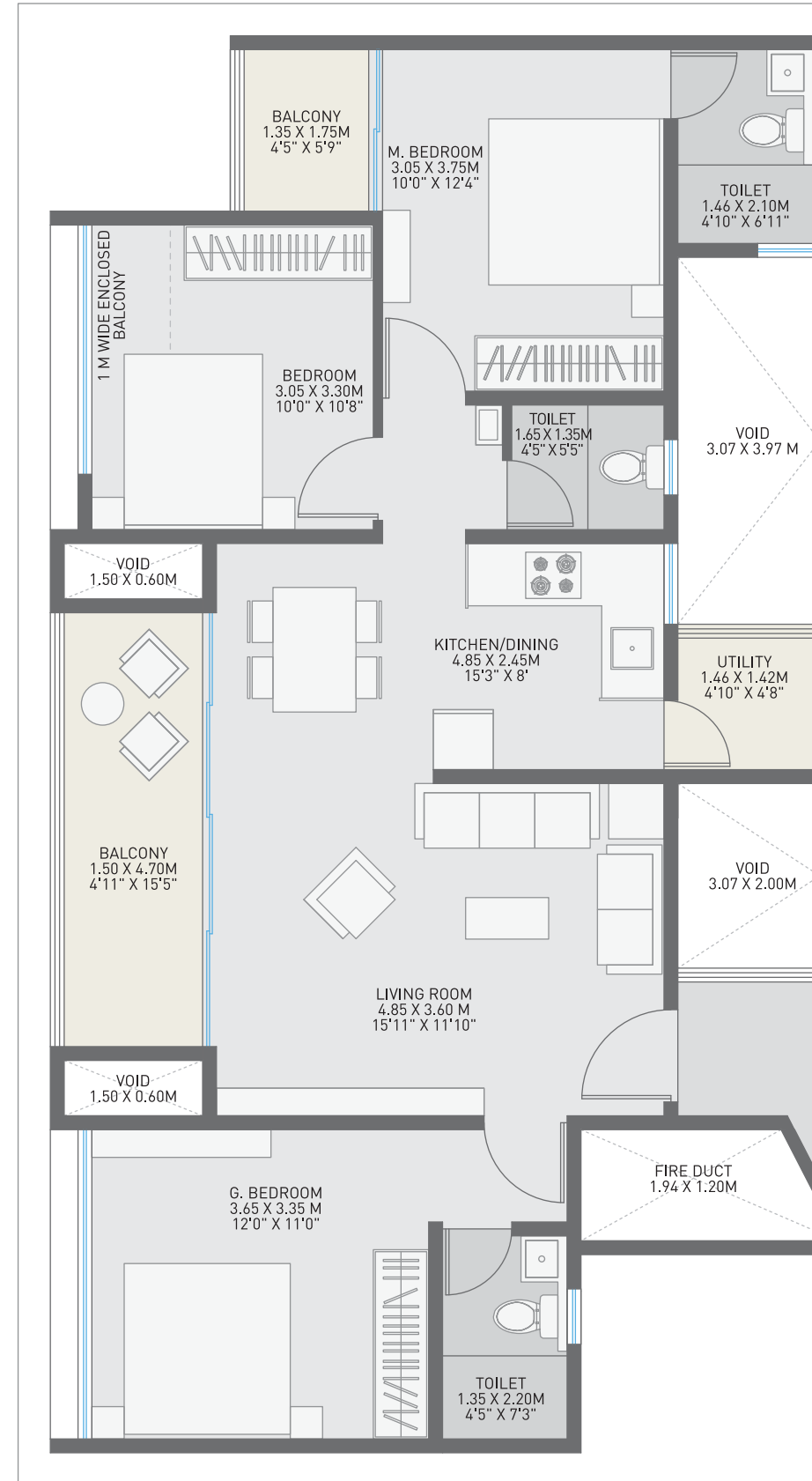


### KEY PLAN



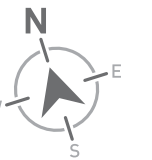
# TYPICAL UNIT PLAN

## 3 BHK



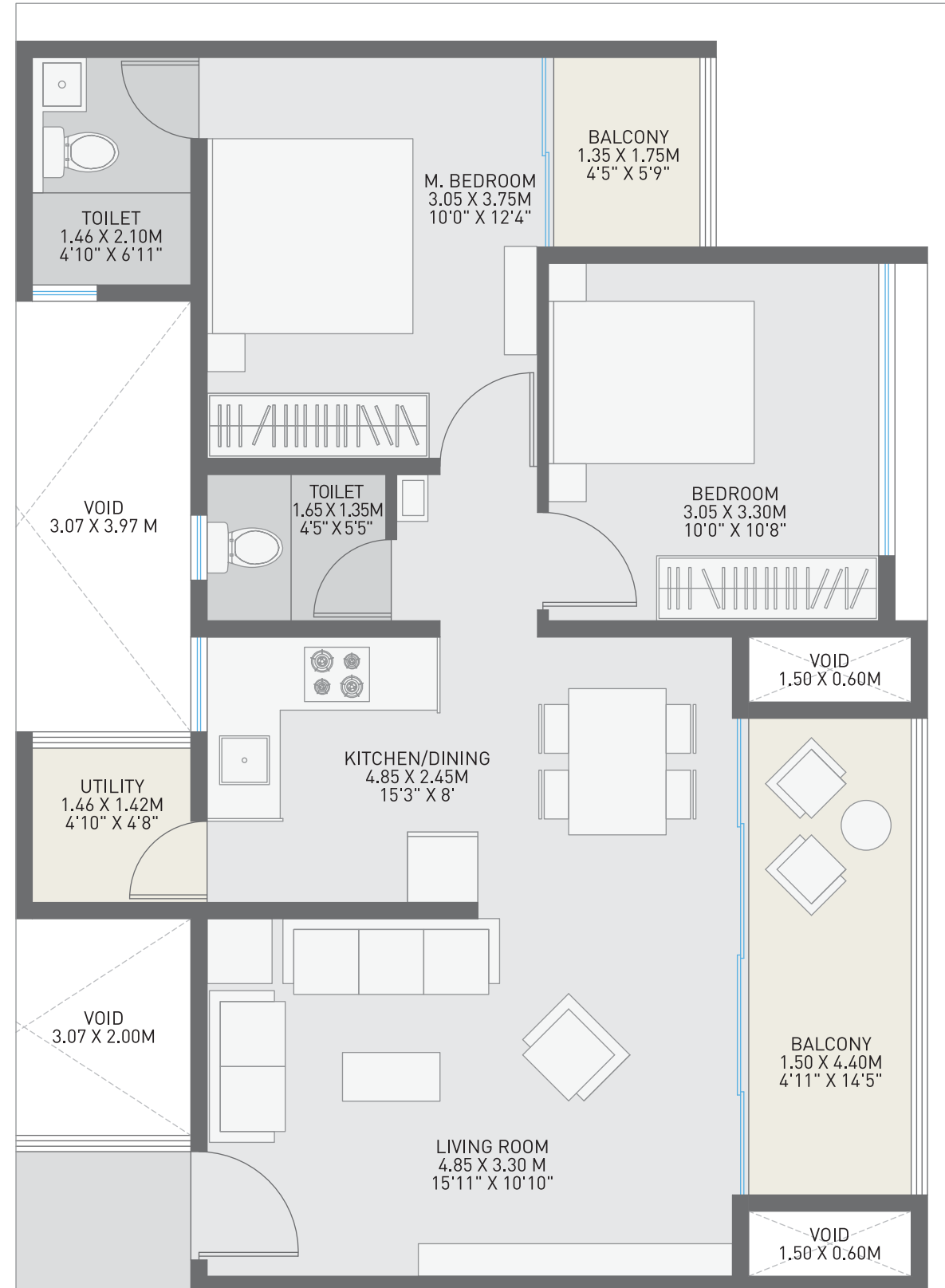
### AREA STATEMENT

TYPE	CARPET AREA	BALCONY (LIVING ROOM)	BALCONY (BEDROOM)	DRY BALCONY	TOTAL CARPET AREA (SQ.M)	CARPET AREA (SQ.FT) (ROUNDED)
3 BHK	79.82	7.04	2.36	2.09	91.31	983



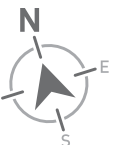
# TYPICAL UNIT PLAN

## 2 BHK



### AREA STATEMENT

TYPE	CARPET AREA	BALCONY (LIVING ROOM)	BALCONY (BEDROOM)	DRY BALCONY	TOTAL CARPET AREA (SQ.M)	CARPET AREA (SQ.FT) (ROUNDED)
2 BHK	60.50	6.60	2.36	2.09	71.54	770



# Auspicious beginnings to URBAN VIBRANCE



Location Map

# Connectivity



### SCHOOLS / INSTITUTES

- S.B. Patil Public School
- BK Birla Centre For Education
- Podar International School
- Akshara International School
- Kendriya Vidyalaya
- Symbiosis Skills & Professional University
- DY Patil College Of Engineering
- Lotus Business School
- JSPM Institute
- PCCOE
- Sai Balaji Institute Of Management



### HOTELS & RESTAURANTS

- Sentosa Resorts And Water Park
- Blue Water Restauration
- Sayaji Hotels
- Ginger Hotel
- Raaga Imperio



### HOSPITALS

- Ojas Multispecialty Hospital
- Unique Multispeciality Hospital
- Aditya Birla Hospital
- Lokmanya Hospital
- Sparsh Hospital



### SPORTS

- MCA Stadium



### RETAIL

- Nawu Imperio
- Decathlon Pune
- Suraj Mini Market



### BUS STOPS AND RAILWAY STATIONS

- Mukai Chawk - BRT Station
- Dehu road Railway Station
- Akurdi Railway Station