

ADI ELEMENTIS

3 Bed Premium Residences

Nigdi - Pradhikaran

Crafted by



Site Address: Plot No 7, Sector 32 A, Ravet Pradhikaran, Nigdi, Pune : 411033

Registered Office Address: Matrix Associates, The Onyx, S No. 186, 7th Floor,
Pink City Road, Near Euro School, Wakad, Pune - 411057

8888336969 | 8805586586
www.adigroup.in | sales@adigroup.in



The project has been registered via MahaRERA
registration number: P52100033217

DISCLAIMER:- The perspective images, visuals, are artist's conception and may not be to the scale and may not represent the actual facade, elevation, landscaping, ground development etc. Subject to the approval of authorities or in the interest of continuing improvement, the Promoter/ Developer reserves the right to change it without prior notice or obligation. Solely the amenities, specifications or features, terms & conditions mentioned in Agreement for Sale (if any) shall be final & binding and no details mentioned in this printed material shall in any way govern any transactions. The viewers affirm that he/she has not taken his/her decision of Purchasing/ Booking of unit(s) by viewing this perspective. The Company is not responsible for the action of the viewers purchasing/ booking a unit relying on this brochure which is for guidance only and does not constitute part of an offer or contract.



WITNESS NATURE'S 4 ELEMENTS STRIKE FOR A BALANCED LIFE

Water soothes and heals.

Air refreshes and revives.

Earth grounds and holds.

Fire is a burning reminder of our own will and creative power.

Breathe them in. Swallow their spells.

There's a certain sweet comfort in knowing that you belong to them all.



These elements come together, creating Elementis and bringing out perfectly balanced homes to nurture in.

Immerse yourself at Adi Elementis, that blends in nature's goodness & exceptional living for you.

**BLENDING,
STABILISING, ALIGNING
NATURE'S ELEMENTS
INTO YOUR HOMES**

ARTISTIC IMPRESSION



ARTISTIC IMPRESSION

A BALANCE OF NATURE & NURTURE FOR SPLENDID LIVING



Bringing the perfect blend of elements of nature into homes encircling pristine environments, Adi Elementis is curated to sync nature's rhythm to the melodies of a peaceful lifestyle for you at one of the most wholesome localities of Pune- Pradhikaran!



AIR-PRAANA

A Healer & Purifier

*Let her fingers brush you through,
purifying the aura around you!*

*Experience the touch of swift air everyday by
surrounding yourself with serene
environment at Adi Elementis.*





ENTRANCE LOBBY

Pause from your everyday chores, connect with your surroundings, breathe in the goodness and soothe your soul.

**ARTISTIC SPACES REFLECTING
ONTO NOURISHING BONDS**



CHILDREN'S PLAY AREA

Engage In Playdates, Create Everlasting Memories

ARTISTIC IMPRESSION



BARBEQUE LOUNGE

Inhale, Exhale & Align Your Energies



MEDITATION ZONE

Relax In Harmony With Nature

ARTISTIC IMPRESSION

EARTH-BRAHMĀ

The Creator Of All

*A cradle of life full of magnificence,
This Mother knows no indifference!*

*Get lost in the mystic spaces of Adi Elementis
that keep you enclosed, grounded and in
harmony with Mother Earth.*





AIR CONDITIONED MULTI PURPOSE HALL

Get-Together, Converse & Celebrate



Adorn your Life with
Games.

INDOOR GAMES

Take It Easy, Play It Out!

ARTISTIC IMPRESSION



AIR CONDITIONED GYM

Make Fitness & Wellness Join Hands



MUSIC & DANCE STUDIO SPACE

Sing In The Tunes Of Joy

ARTISTIC IMPRESSION

*Soak in the sun, lay back and find inner peace
away from the burdens of the city.*

ROOFTOP LEVEL AMENITIES

- *Yoga-Zumba-Aerobics/ Meditation Zone*
- *Air Conditioned Gymnasium*
- *Gazebo*
- *Air Conditioned Multipurpose Hall*
- *Party Lawn*
- *Tech Zone*
- *Barbeque Lounge*
- *Dance & Music Studio Space*
- *Suryanamskar zone & Sunset Deck*
- *Herb Garden*
- *Indoor Games*
- *Sky Walk*
- *Sky Katta / Seatings*
- *Rooftop Community Kitchen*

GROUND LEVEL AMENITIES

- *Well Designed Entrance Lounge*
- *Children's Play Area*
- *Access Controlled Lobbies*
- *Car Drop Off Area With Designer Canopy*
- *Power Backup For Designated Common Areas*
- *Gazebo*
- *Garbage Chute For Waste Management*
- *Common Toilets For Maids / Drivers*
- *Herb Garden*

FIRE-AGNĪ

A Cleanser & Teacher

*Feisty yet evoking light,
It burns impurities, warming the night!*

*Engulf in abmers of a perfectly balanced life at
Adi Elementis, that encapsulates all things
forged in fire for to illuminate your way with
good-living.*





LIVING ROOM

Where Spaces Reflect You



MASTER BEDROOM

For Nights Engulfed In Rest & Comfort

ARTISTIC IMPRESSION



KITCHEN

Aiding You To Experiment, Innovate & Achieve



BATHROOM

Making your showers longer, calmer and fresher

ARTISTIC IMPRESSION

SPECIFICATIONS



STRUCTURE / MASONRY

- Earthquake Resistant RCC Structure
- Fly Ash/ AAC Block Masonry



FLOORING

- Glazed Vitrified Tiles For Living Room & Passage
- Glazed Vitrified Tiles For All Bedrooms & Kitchen
- Anti Skid Tiles In Toilets & Balcony Flooring



BATHROOM

- Premium Designer Wall Tiles Upto False Ceiling
- Jaquar/ Grohe /equivalent Make CP Fittings
- Jaquar/ American Standard /Equivalent Sanitary Wares
- False Ceiling for all Bathrooms



ELECTRICAL

- Adequate Electrical Points In The Entire Apartment



DOORS / WINDOWS

- Superior Quality Door Frames For Main Door & Bedrooms
- Digital Lock for Main Door
- All Doors With Designer Laminate Finish
- Aluminium Sliding Windows With Mosquito Mesh

*Taste the fusion of architectural artistry
& craftsmanship, with a dash of phenomenal
specifications.*



PAINTING/WALL FINISH

- External Sand Faced Cement Plaster
- Texture Paint Finish On External Walls /
Semi Acrylic Paint for Ducts
- Gypsum/POP finished Internal walls
- Plastic/ Acrylic Emulsion Paint For Internal Walls & Ceilings



SECURITY SYSTEM

- Video Door Phone
- Glass Railings for Sit-Out Area
- Smoke Detectors In The Apartment
- Fire Sprinklers In The Apartment



KITCHEN

- Granite Platform With Stainless Steel Sink
- Designer Tiles Upto 2 Ft. Above The Platform
- Provision For Electric & Water Connection For Water Purifier



UTILITY / DRY BALCONY

- Additional Service Counter With Sink In Utility Area
- Inlet and Outlet Point for Washing Machine
- Electric Point for Washing Machine

WATER - ĀPA

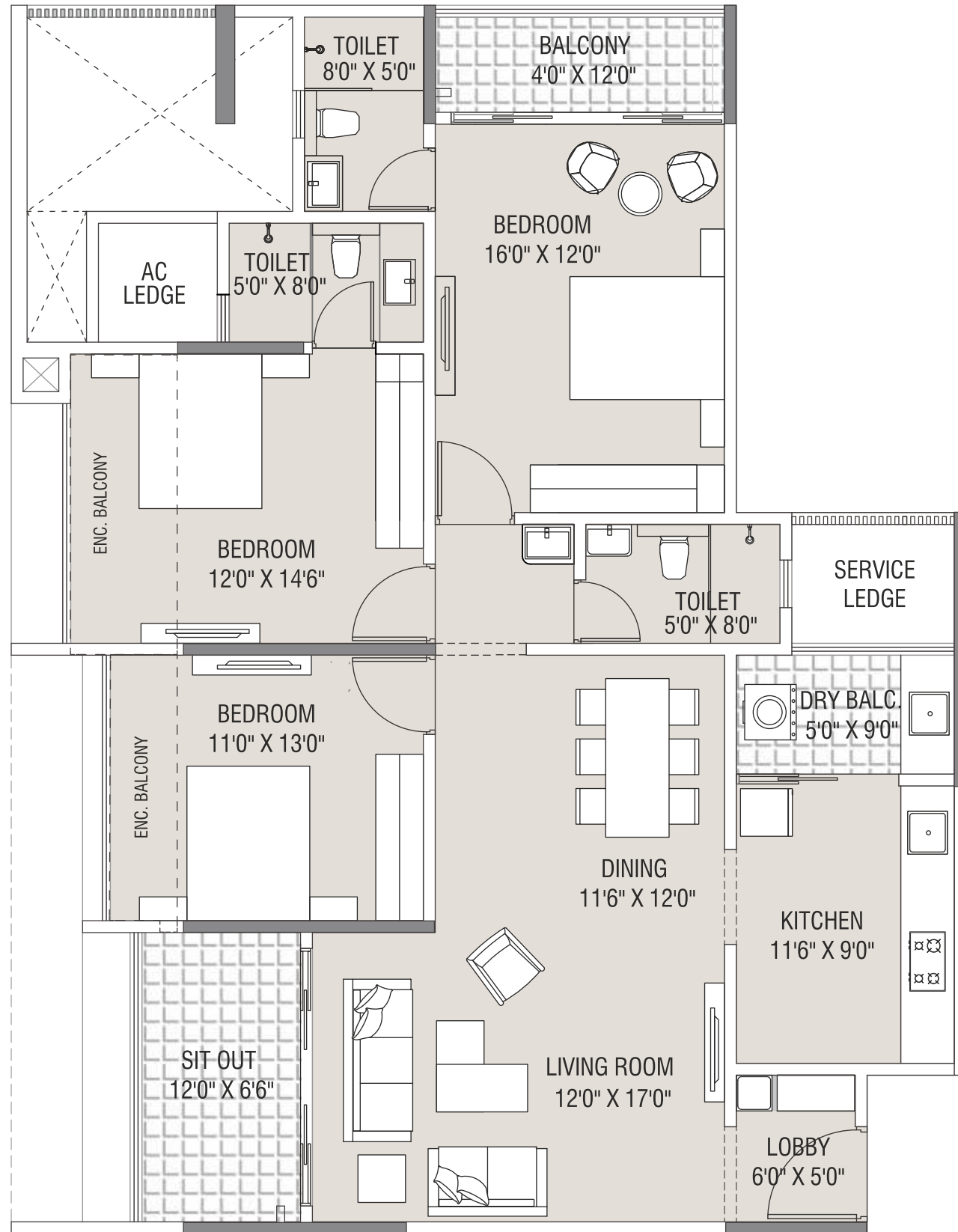
A Nourisher & Regulator

*Quench your thirst or do your chores,
You'll often find her kissing the sun by the
shore!*

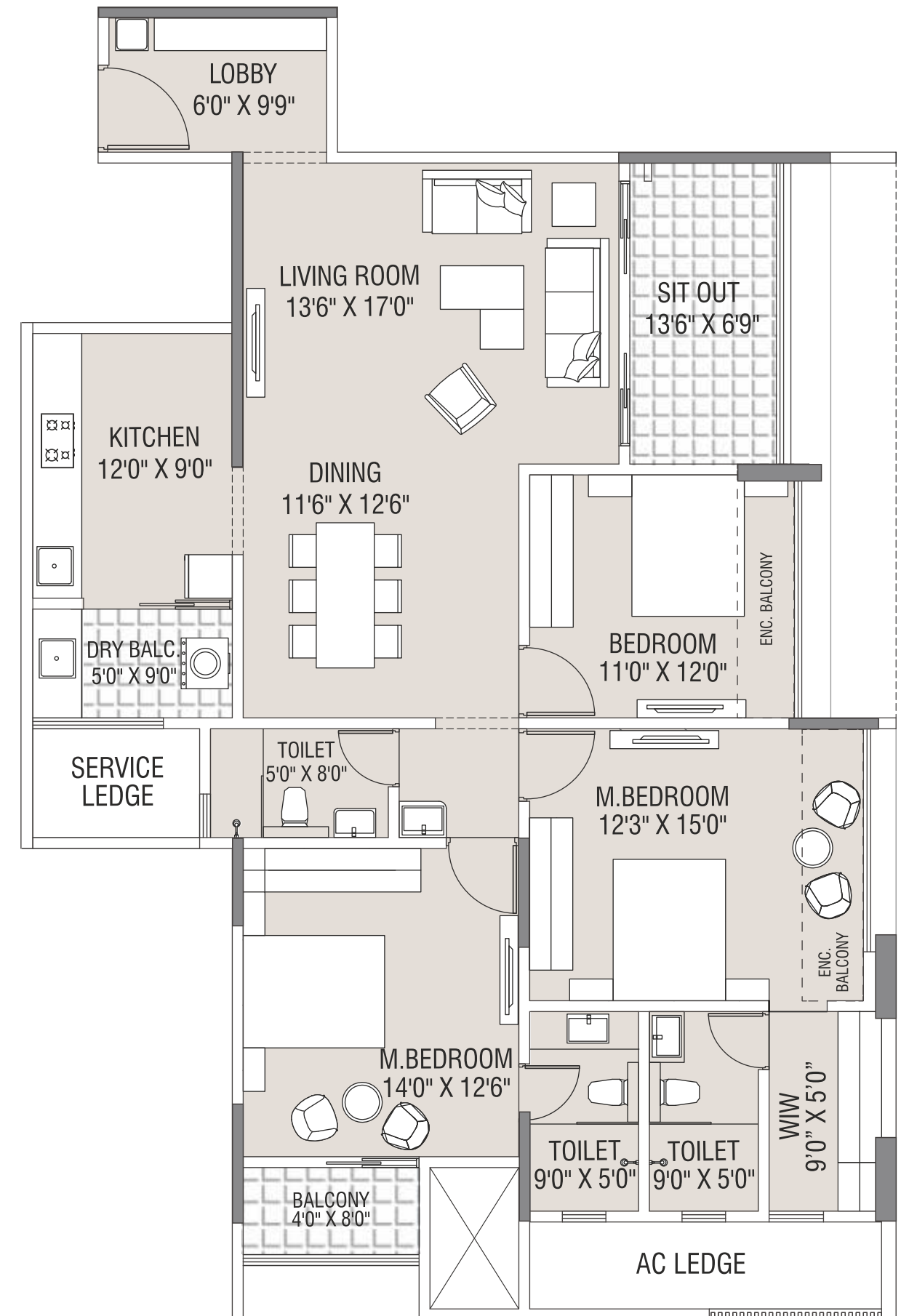
*Dive deep into the magic of carefully curated
spaces of Adi Elementis;
where energies flow in unison like dew
dropping from a waterfall.*



3 RLK GRANDE
Carpet Area - 1387 sq.ft.



3 RLK LUXE
Carpet Area - 1486 sq.ft.



FLAT TYPE	FLAT NO.	CARPET AREA		ENCLOSED BALCONY AREA		OPEN BALCONY AREA		SIT OUT AREA		TOTAL USABLE AREA	
		SQ.MT.	SQ.FT.	SQ.MT.	SQ.FT.	SQ.MT.	SQ.FT.	SQ.MT.	SQ.FT.	SQ.MT.	SQ.FT.
3 RLK GRANDE	101,201,301,401,501,601,701,801,901,1001,1101,1201,1301,1401	105.12	1132	7.90	85	8.50	91	7.30	79	128.82	1387

FLAT TYPE	FLAT NO.	CARPET AREA		ENCLOSED BALCONY AREA		OPEN BALCONY AREA		SIT OUT AREA		TOTAL USABLE AREA	
		SQ.MT.	SQ.FT.	SQ.MT.	SQ.FT.	SQ.MT.	SQ.FT.	SQ.MT.	SQ.FT.	SQ.MT.	SQ.FT.
3 RLK LUXE	103,203,303,403,503,603,703,803,903,1003,1103,1203,1303,1403	116.48	1254	6.13	66	7.06	76	8.38	90	138.05	1486

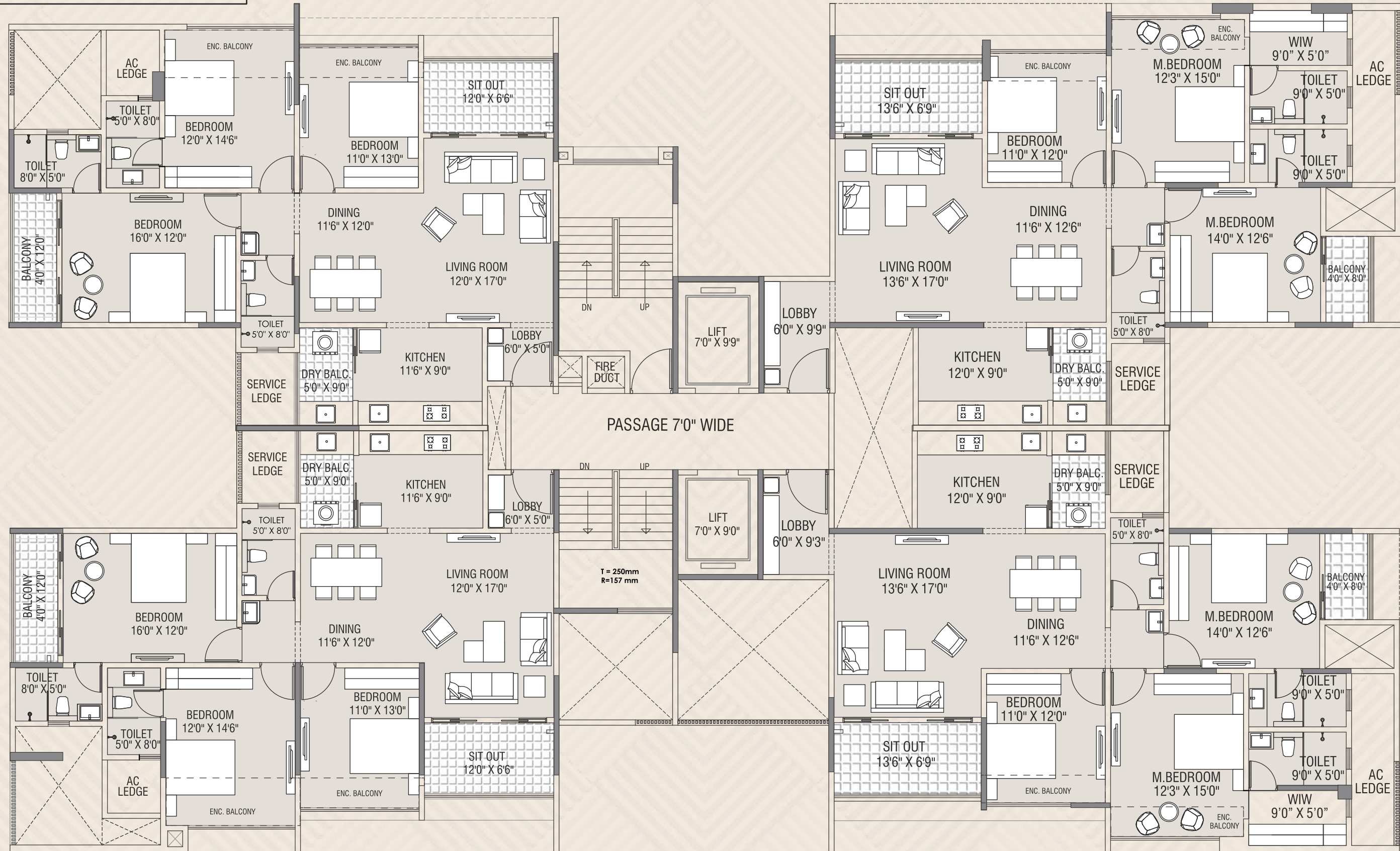
DISCLAIMER: The area in Sq. Ft. has been mentioned just for the convenience of customer for better understanding. Arrangement of furniture is just for the purpose to show possible layout and not part of offer/ sale. All room dimensions are inclusive of enclosed balcony (wherever applicable as shown above). The dimensions given in feet & inches are rounded to nearest precision. Internal room dimensions written in sale/marketing plan are from un-finished wall to wall, to match with sanction plans.

DISCLAIMER: The area in Sq. Ft. has been mentioned just for the convenience of customer for better understanding. Arrangement of furniture is just for the purpose to show possible layout and not part of offer/ sale. All room dimensions are inclusive of enclosed balcony (wherever applicable as shown above). The dimensions given in feet & inches are rounded to nearest precision. Internal room dimensions written in sale/marketing plan are from un-finished wall to wall, to match with sanction plans.

FLOOR PLAN

202,302,402,502,702,
802,902,1002,1202,1302,1402

203,303,403,503,703,
803,903,1003,1203,1303,1403



201,301,401,501,701,
801,901,1001,1201,1301,1401

204,304,404,504,704,
804,904,1004,1204,1304,1404

FLAT TYPE	FLAT NO.	CARPET AREA		ENCLOSED BALCONY AREA		OPEN BALCONY AREA		SIT OUT AREA		TOTAL USABLE AREA	
		SQ.MT.	SQ.FT.	SQ.MT.	SQ.FT.	SQ.MT.	SQ.FT.	SQ.MT.	SQ.FT.	SQ.MT.	SQ.FT.
TYPICAL FLOOR PLAN	201,301,401,501,701,801,901,1001,1201,1301,1401	105.12	1132	7.90	85	8.50	91	7.30	79	128.82	1387
	202,302,402,502,702,802,902,1002,1202,1302,1402	105.12	1132	7.90	85	8.50	91	7.30	79	128.82	1387
	203,303,403,503,703,803,903,1003,1203,1303,1403	116.48	1254	6.13	66	7.06	76	8.38	90	138.05	1486
	204,304,404,504,704,804,904,1004,1204,1304,1404	116.12	1250	6.13	66	7.06	76	8.38	90	137.69	1482

DISCLAIMER: The area in Sq. Ft. has been mentioned just for the convenience of customer for better understanding. Arrangement of furniture is just for the purpose to show possible layout and not part of offer/ sale. All room dimensions are inclusive of enclosed balcony (wherever applicable as shown above). The dimensions given in feet & inches are rounded to nearest precision. Internal room dimensions written in sale/marketing plan are from un-finished wall to wall, to match with sanction plans.





Understanding how location plays a very crucial role in the alignment of a stable life, Adi Elementis is a project that strives to give you solid grounds that you can call a home; a safe space to nurture your dreams.

KEY DISTANCES

EDUCATION

- D Y Patil College - 2 Min*
- S B Patil School / College - 10 Min*
- Elpro International School - 10 Min*
- Indira Group Of Institute - 15 Min*

DAILY NEEDS & ENTERTAINMENT

- D Mart - 2 Min*
- Reliance Mart Superstore - 7 Min*
- Big Bazar/ City One Mall / Pune Central - 15 Min*

HIGHLIGHTS OF PRADHIKARAN

- Appughar - 8 Min*
- Durga Tekdi - 10 Min*
- Sentosa Resort - 10 Min*

HEALTHCARE

- Ojas Multi Speciality Hospital- 2 Min*
- Unique Multi Speciality Hospital - 2 Min*
- Aditya Birla Hospital- 10 Min*

CONNECTIVITY

- Akurdi Railway Station - 5 Min*
- Pimpri -Chinchwad Station - 10 Min*
- Mumbai Pune Express Road - 10 Min*

BANKS

- State Bank Of India - 2 Min*
- HDFC Bank - 2 Min*

