



# YBZ

**YASHADA BUSINESS ZONE**

**DESTINED FOR SUCCESS**





**YASHADA**<sup>®</sup>  
Realty Group

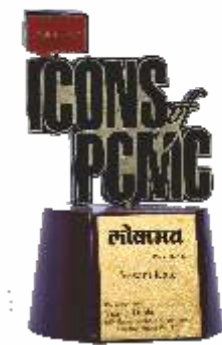
Dreams, Realized



**20+ Years. 25+ Projects.**  
**Countless dreams, realized.**

Over the past two decades, Yashada Realty has been perfecting the craft of infusing the highest quality in all its creations and designs. The Group also respects the customers' desires to get complete value for their money, and thus incorporates sensible, value-added features in all its projects that are high on lifestyle benefits, and low on maintenance costs. And that's why today, Yashada Realty enjoys a rich legacy of building lifespaces that are unmatched in both beauty and meticulous craftsmanship.

# Company & Achievement



# Ongoing Projects



2 & 3 BHK

MOSHI-ALANDI ROAD



JUBILEE HILLS

Super-Sized 3 & 4 BHK Homes

BANER



PIMPLE SAUDAGAR



YASHADA  
WINDSONG

RAVET

SPLENDID  
PARK

1, 2 & 3 BHK Life Changing Homes

MOSHI-ALANDI ROAD



2 & 3 BHK Spacious Homes

LOHEGAAON

BRAND  
SQUARE

PIMPLE SAUDAGAR



Spacious  
2 BHK & Smart 3 BHK

PIMPRI

# Our Milestones



2 & 3 BHK  
EXQUISITE HOMES

**Pimple Nilakh**



2 BHK Spacious Homes

**Pashan**



2 & 3 BHK Sensible Homes

**Hinjawadi-Wakad Central**



Spacious 2 & 3 BHK Residences

**Pimple Saudagar**



1 & 2 BHK QUALITY HOMES

**Chakan**



1, 2 & 2½ BHK Gracious Homes

**Lohegaon**



2 | 3 BHK balanced living

**Pimple Saudagar**



**GOLDEN PALMS**

1 & 2 BHK FINE FLATS AT MOSHI

**Moshi**



1, 2 BHK Comfy  
Apartments & Row Houses

**Spine Road, Sector 9**



1, 2 & 3 BHK Comfy Homes

**Dhanori**



**TRIOSE**

Thrice as Nice 2 & 3 Bed Lifehomes

**Pimple Saudagar**



2 BHK Green Homes

**Wakad - Thergaon**



1, 2 & 3 BHK COMFORT HOMES  
Blooming Life. Sterling Moments.

**Rahatani**



2 BHK Comfy Homes

**Spine Road, Sector 11**



2 & 3 BHK Premium Homes

**Pimple Saudagar**



1, 2, 2½ BHK LUXURIOUS APARTMENTS

**Viman Nagar Annexe,  
Lohegaon**



1 & 2 BHK HOMES

**Pimple Saudagar**



1 BHK, 1.5 BHK and 2 BHK homes

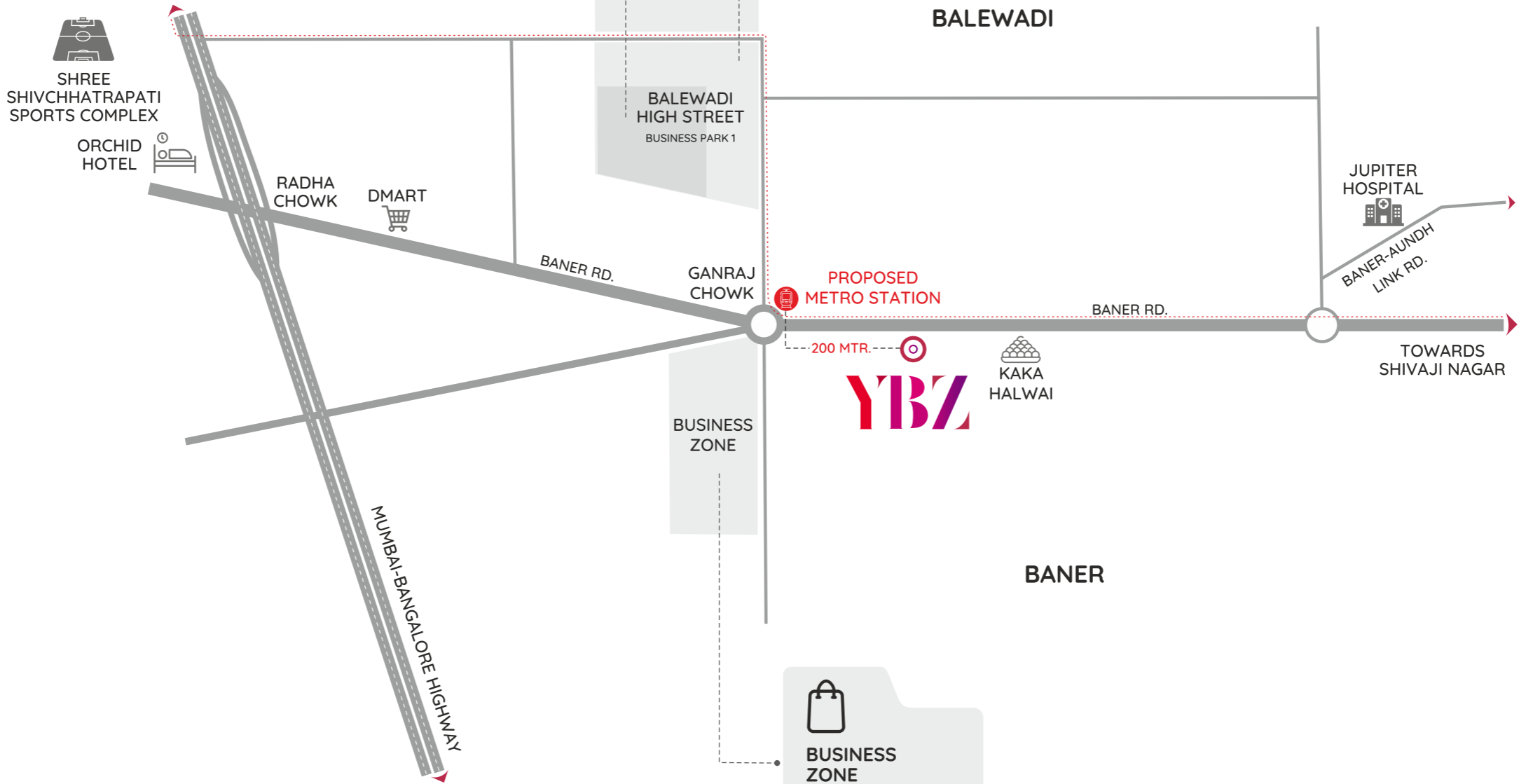
**Mamurdi (Ravet Annexe)**

**PANCHSHIL BUSINESS PARK**

- Siemens
- Cummins
- Veritas
- Qualys
- T-Systems

**BALEWADI HIGH STREET**

Gong	Swig	Tea Point
The Urban Foundry	Terttulia Bistro	Chaayos
Apache	Starbucks	2.0 Culture
Incognito	McDonald's	Wat A Burger
Theobroma	Marrakesh	Taco Bell
Dorabjee's	Kinki	L'Apicio
Nawab Asia	Iron Bar	Bharat Bhavan



**BUSINESS ZONE**

- Zudio
- Pantaloons
- Skechers
- Pepperfry Studio
- JadeBlue
- Reliance Digital

# LOCATION MAP



Mercedes Benz	02 Km.	JW Marriot Hotel	08 Km.	Sports - Balewadi Stadium	1.5 Km	D Mart	01 Km.
Audi Showroom	03 Km.	Courtyard Marriot	5.5 Km.	Westend Mall	.05 Km.	Rajiv Gandhi Infotech Park Hinjewadi	09 Km.

# BANER

## PUNE'S NO.1 COMMERCIAL HOTSPOT

Whether you're a start-up owner, an entrepreneur or a business leader for a top MNC, your growth strategy includes one common denominator – your location. Irrespective of the size, industry or sector, the area you choose to do business will often determine your destiny.

That's why all new and seasoned business owners invest a great deal of time and effort in finding the perfect location. But when it comes to West Pune, leaders don't think twice before zeroing in on Baner.

Destined for Success

Commercial Growth

Access to All Facilities

Ease of Doing Business



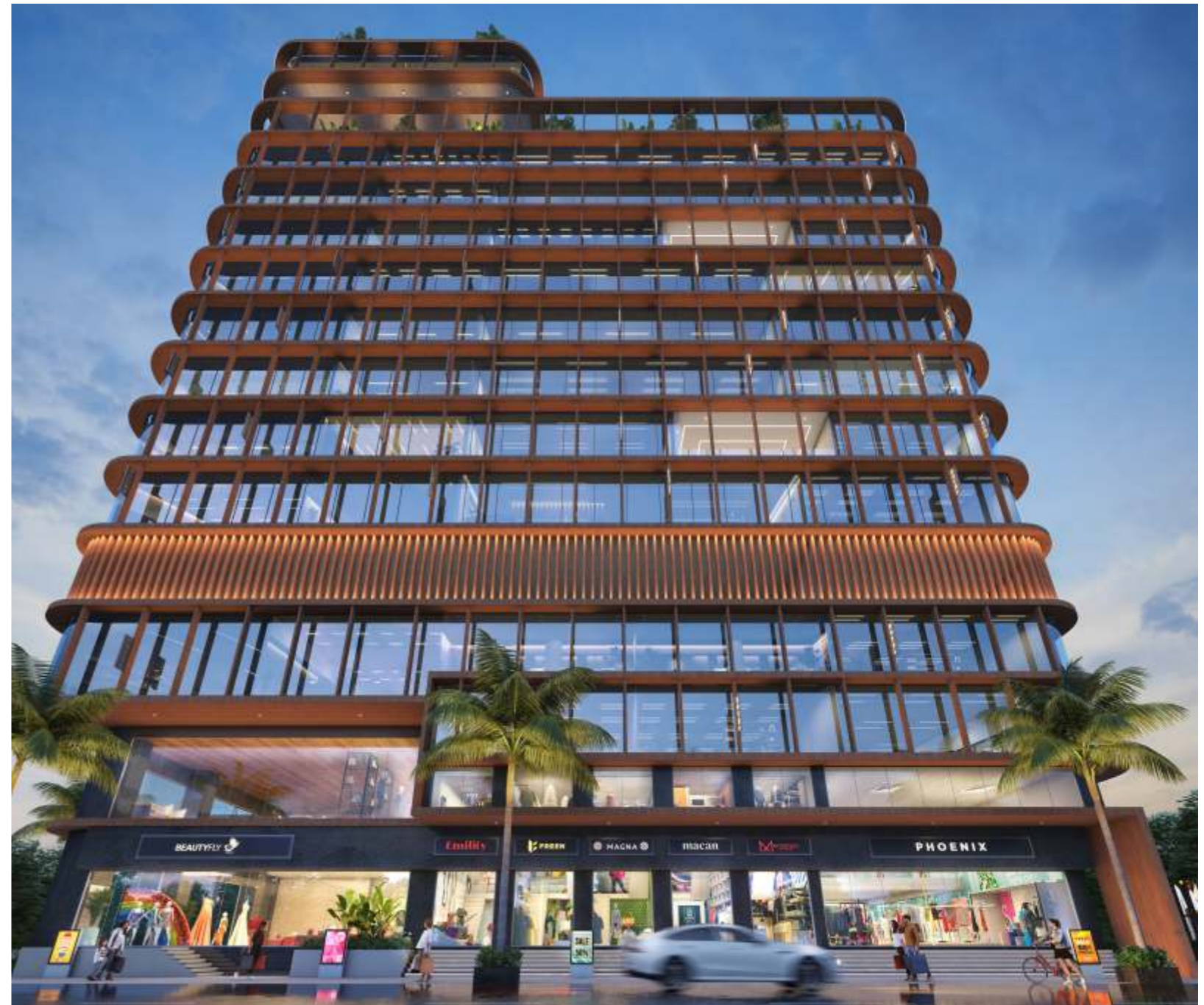


# BANER

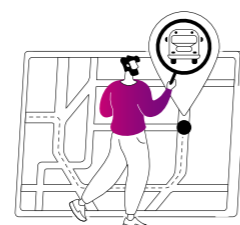
## EXCELLENT CONNECTIVITY EXCEPTIONAL ACCESSIBILITY

Located in West Pune, Baner has evolved exceptionally in the last decade. Its proximity to the Mumbai-Bengaluru Highway, Expressway and connectivity to Aundh, Balewadi, Wakad and Pune University Road make it a top choice for commercial spaces in Pune.

It's also poised to become a station for the upcoming Pune Metro, enabling excellent connectivity and accessibility for employees, clients and customers. Besides commercial development, Baner has also picked up as a residential destination with some of the most premium, luxurious and opulent projects in the vicinity. Whether you're a product-based business, a service company or a solution-driven



PUNE  
METRO  
STATION



CONNECTIVITY  
VIA MAJOR  
ROADS



WEST  
PUNE'S  
MOST  
DESIRABLE  
LOCATION



EXCEPTIONAL  
RESIDENTIAL &  
COMMERCIAL  
DEVELOPMENT

# THRIVING BUSINESSES BEGIN AT

# YBZ

Whether you're a start-up owner, an entrepreneur or a business leader for a top MNC, your growth strategy includes one common denominator – your location. Irrespective of the size, industry or sector, the area you choose to do business will often determine your destiny.

That's why all new and seasoned business owners invest a great deal of time and effort in finding the perfect location. But when it comes to West Pune, leaders don't think twice before zeroing in on Baner.



A GRAND COMMON LOBBY

---

OFFICE WITH WASHROOMS

---

AMPLE PARKING SPACE

---

DESIGNED FOR ENERGY CONSERVATION

---

PRODUCTIVE AND PROFITABLE OFFICES

---

DG BACKUP TO COMMON/ OFFICE SPACE  
LIGHTS & AC

---

RAIN WATER HARVESTING

---

ELEGANT DESIGN

---

SPECIAL 2 WHEELER PARKING FLOOR

---

PER FLOOR 5 LIFTS

---

ELEGANT DESIGN

---

12 FT FLOOR TO FLOOR HEIGHT

---

FIRE FIGHTING SYSTEM

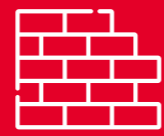
---

VASTU COMPLIANCE



### STRUCTURE

- R.C.C. FRAME STRUCTURE

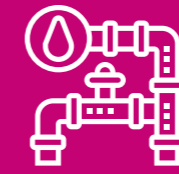


### WALL

- INTERNAL WALLS
- EXTERNAL WALL

AAC BLOCKS

AAC BLOCKS



### PLUMBING & SANITARY

- SANITARY FITTINGS
- CP FITTINGS
- CONCEALED WATER PIPE
- FOR DRAINAGE / STORM WATER LINES



### FLOORING

- SHOWROOM ,OFFICES & RESTAURANTS
- GROUND FLOOR ENTRANCE LOBBY
- OTHER LOBBY
- STEPS AND PASSAGE AT GROUND FLOOR
- TOILETS

VITRIFIED TILE- 600X1200

ITALIAN MARBLE/SIMILAR FLOORING

VITRIFIED TILE- 600X1200

GRANITE AS PER SELECTION

MAT FINISH TILE FLOORING



### DOORS& WINDOWS

- DOOR JAMB(MAIN DOOR IN OFFICE) -
- DOOR SHUTTER -
- OFFICE WINDOWS -

WOODEN JAMBS

PRELAMINATED FLUSH DOOR SHUTTER

ALUMINUM POWDER COATED SLIDING WINDOWS



### PAINTING

- INTERNAL PAINTING WALL      EMULSION PAINT
- EXTERNAL PAINTING            APEX PAINT
- CEILING                              NO PAINT



### ELECTRICAL

- ELECTRIC SUPPLY UPTO OFFICE ENTRANCE



### LIFT

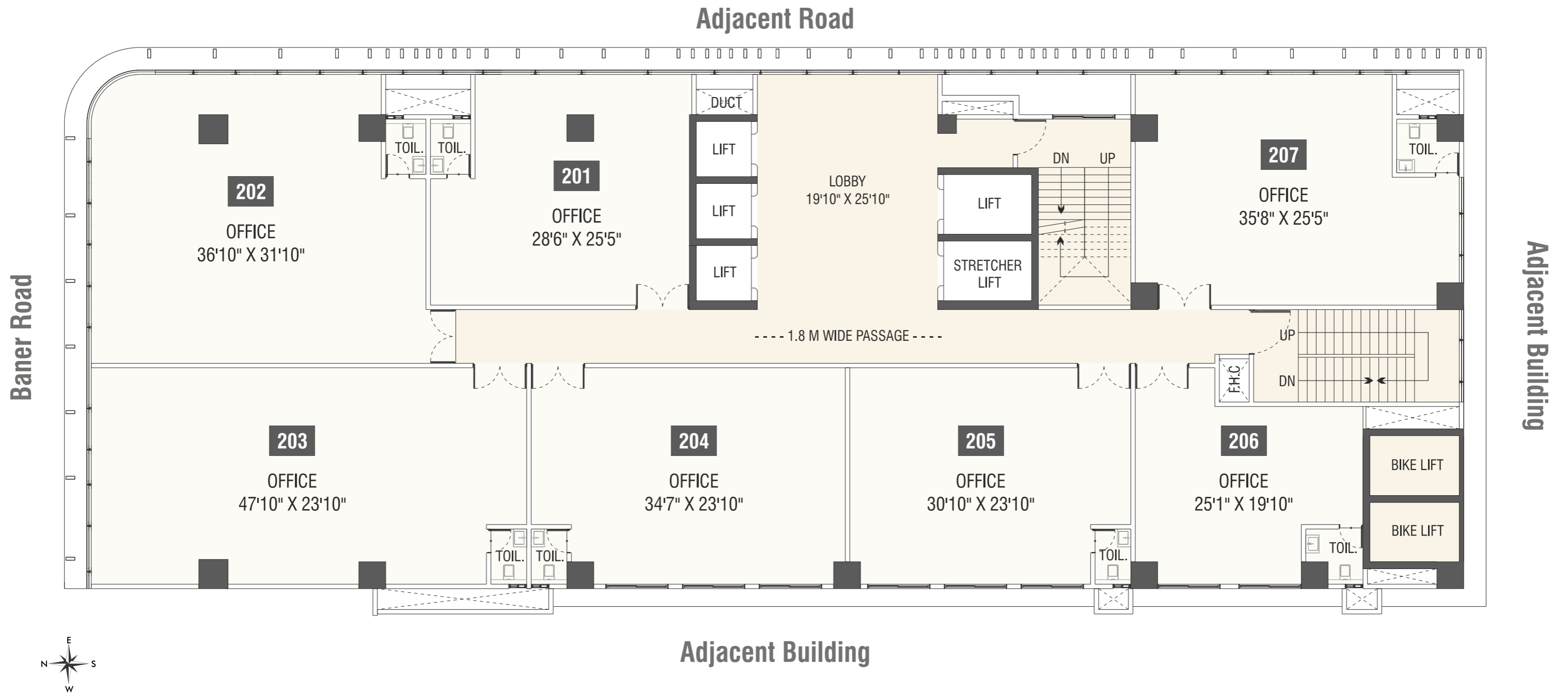


**YASHADA BUSINESS ZONE**  
DESTINED FOR SUCCESS



**YASHADA**<sup>®</sup>  
Realty Group  
Dreams, Realized

## 2ND FLOOR PLAN



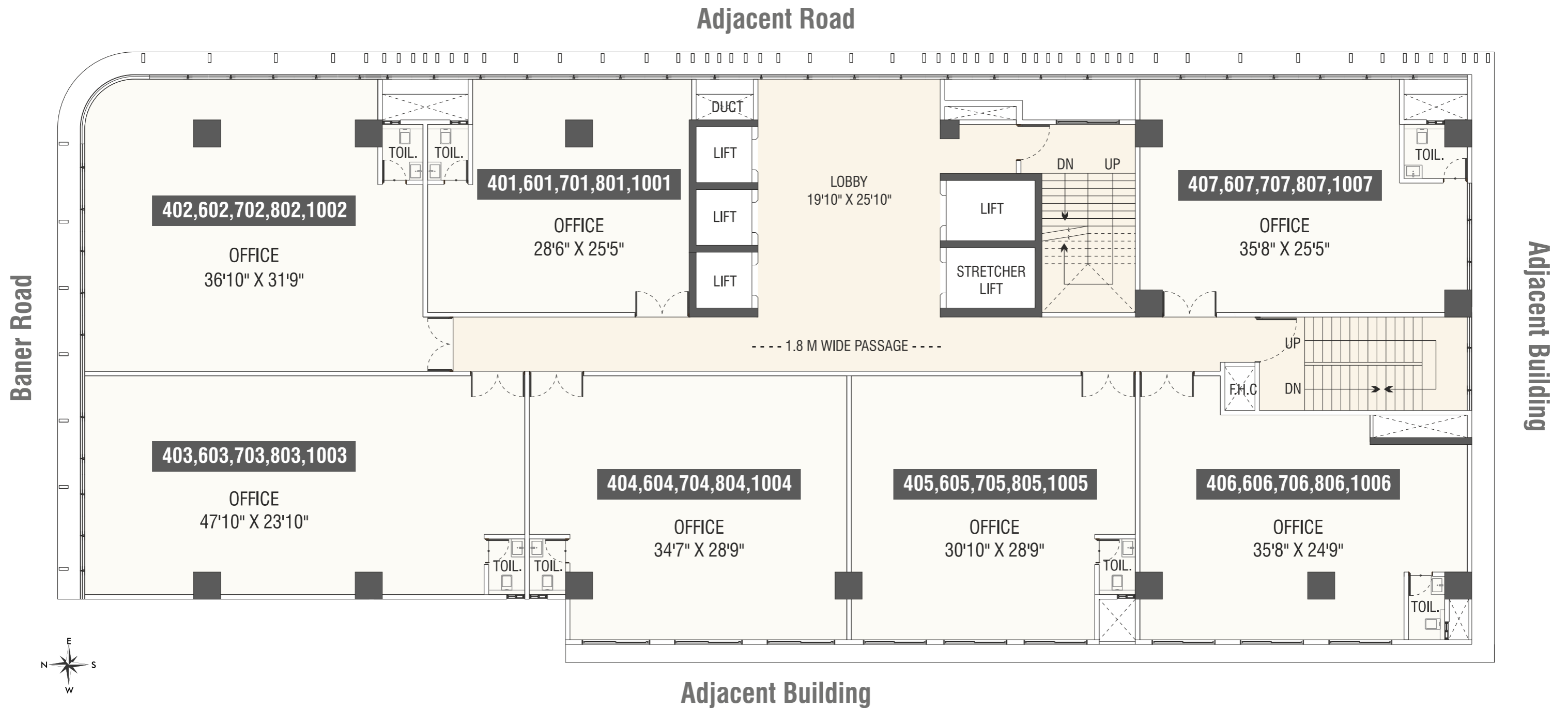


**YASHADA BUSINESS ZONE**  
DESTINED FOR SUCCESS



**YASHADA**<sup>®</sup>  
Realty Group  
Dreams, Realized

**TYPICAL FLOOR PLAN 4TH, 6TH, 7TH, 8TH & 10TH**



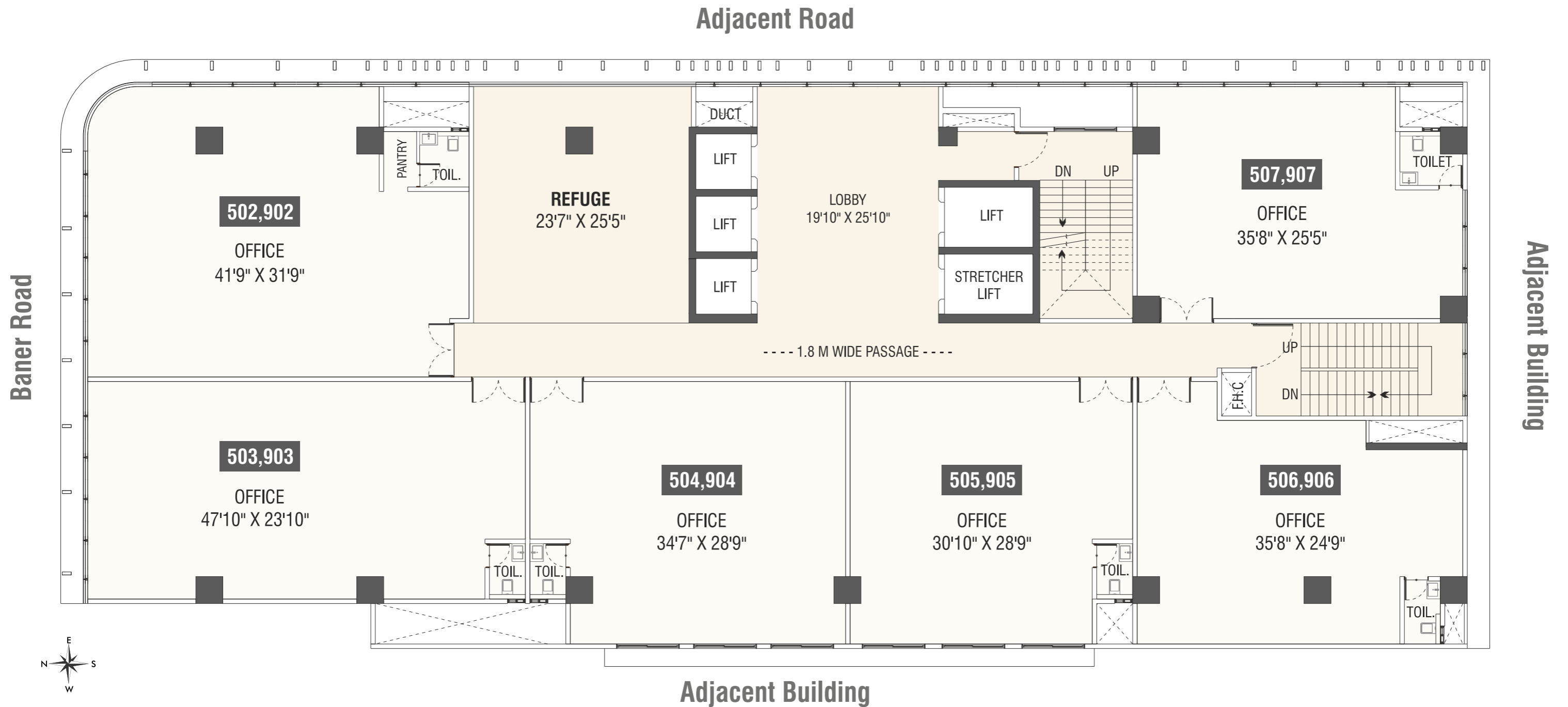


**YASHADA BUSINESS ZONE**  
DESTINED FOR SUCCESS



**YASHADA**<sup>®</sup>  
Realty Group  
Dreams, Realized

## REFUGE FLOOR PLAN 5TH & 9TH





**YASHADA BUSINESS ZONE**  
DESTINED FOR SUCCESS



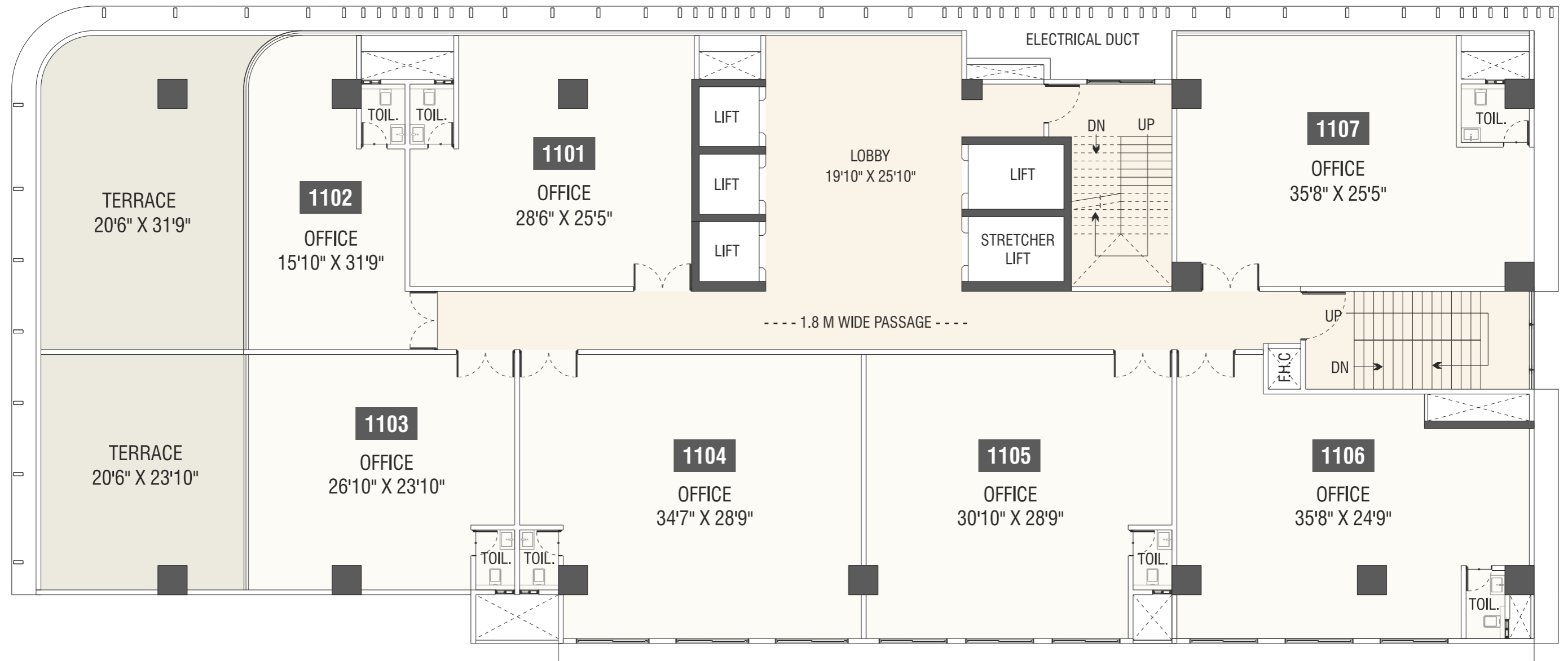
**YASHADA**<sup>®</sup>  
Realty Group  
Dreams, Realized

## 11TH FLOOR PLAN

Adjacent Road

Baner Road

Adjacent Building



Adjacent Building



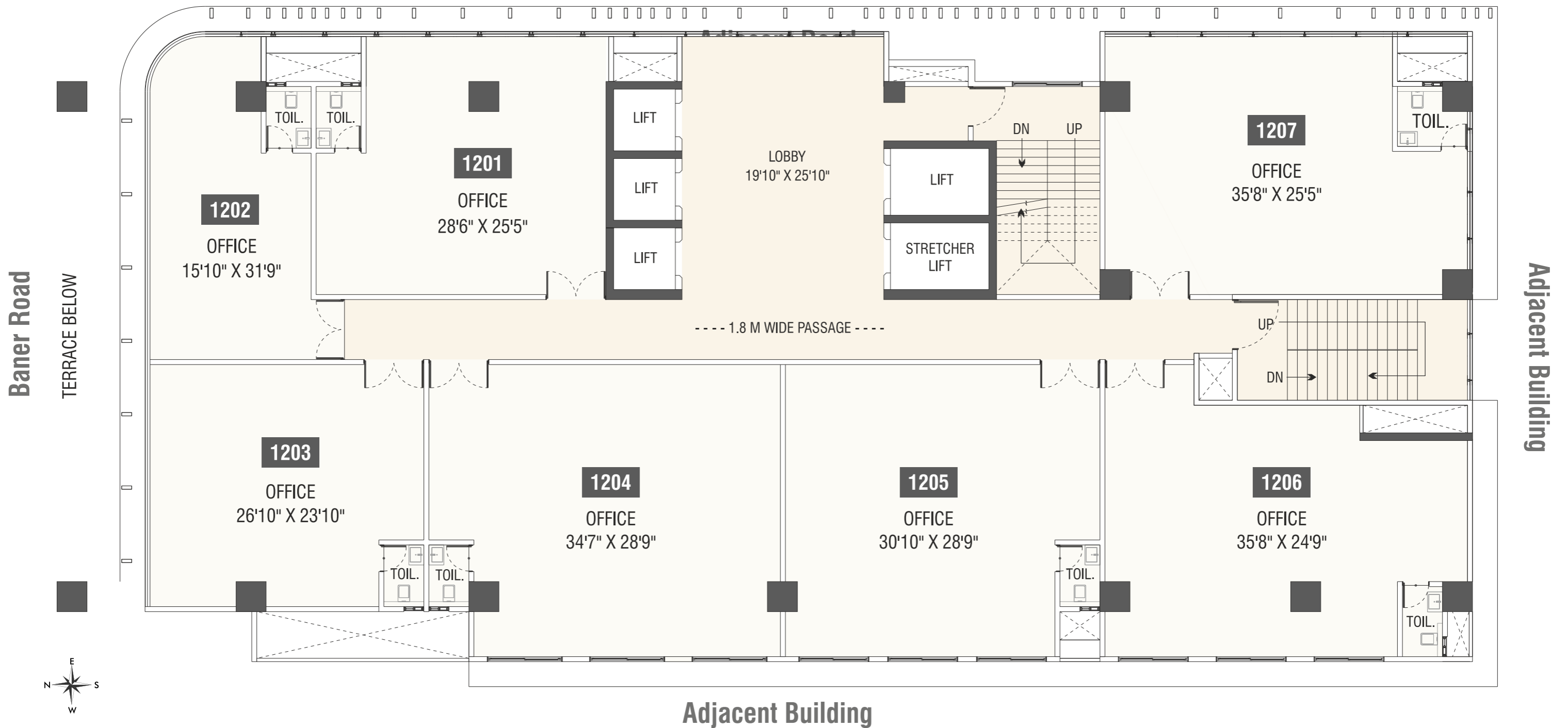


YASHADA BUSINESS ZONE  
DESTINED FOR SUCCESS



YASHADA<sup>®</sup>  
Realty Group  
Dreams, Realized

## 12TH FLOOR PLAN





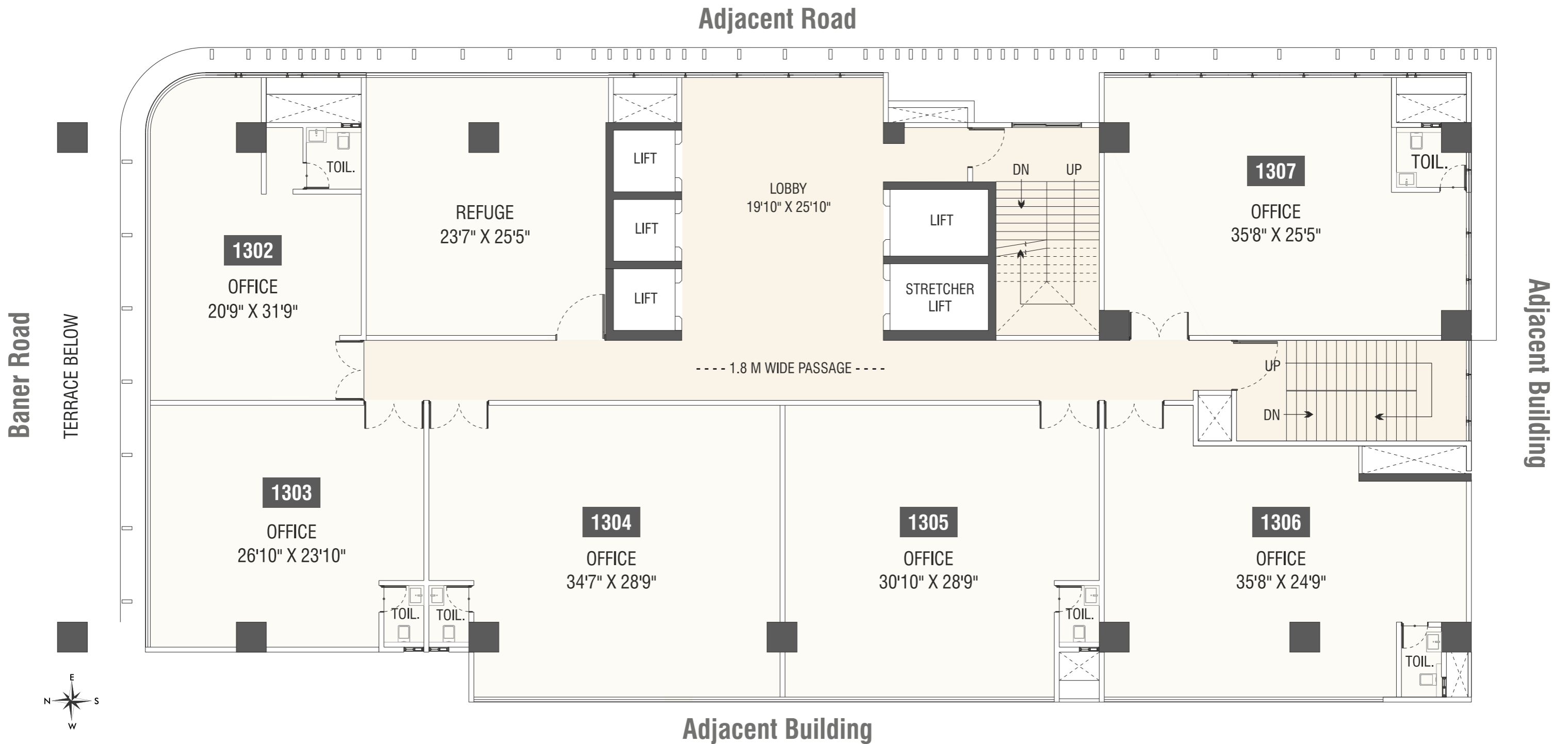


**YASHADA BUSINESS ZONE**  
DESTINED FOR SUCCESS



**YASHADA**<sup>®</sup>  
Realty Group  
Dreams, Realized

## 13TH FLOOR PLAN



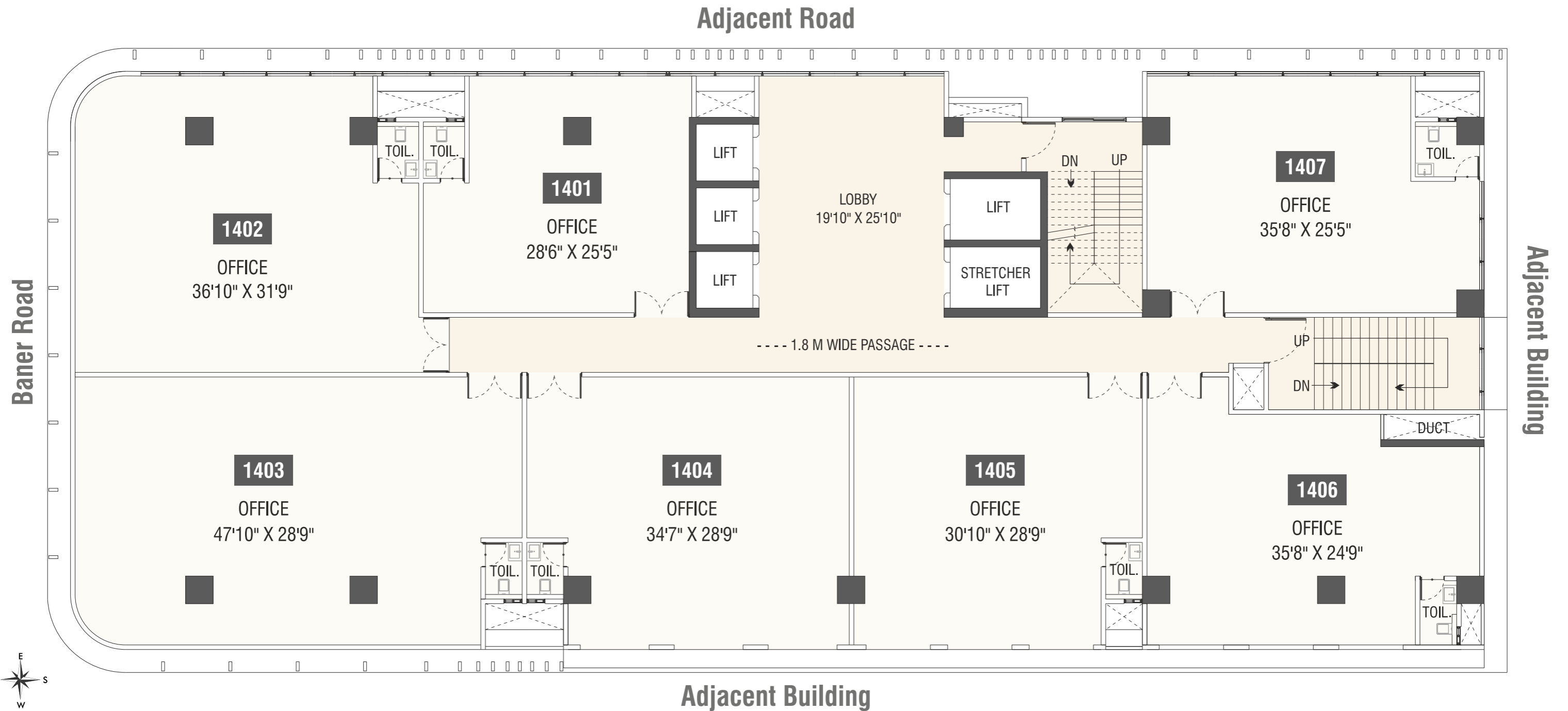


**YASHADA BUSINESS ZONE**  
DESTINED FOR SUCCESS



**YASHADA**<sup>®</sup>  
Realty Group  
Dreams, Realized

## 14TH FLOOR PLAN



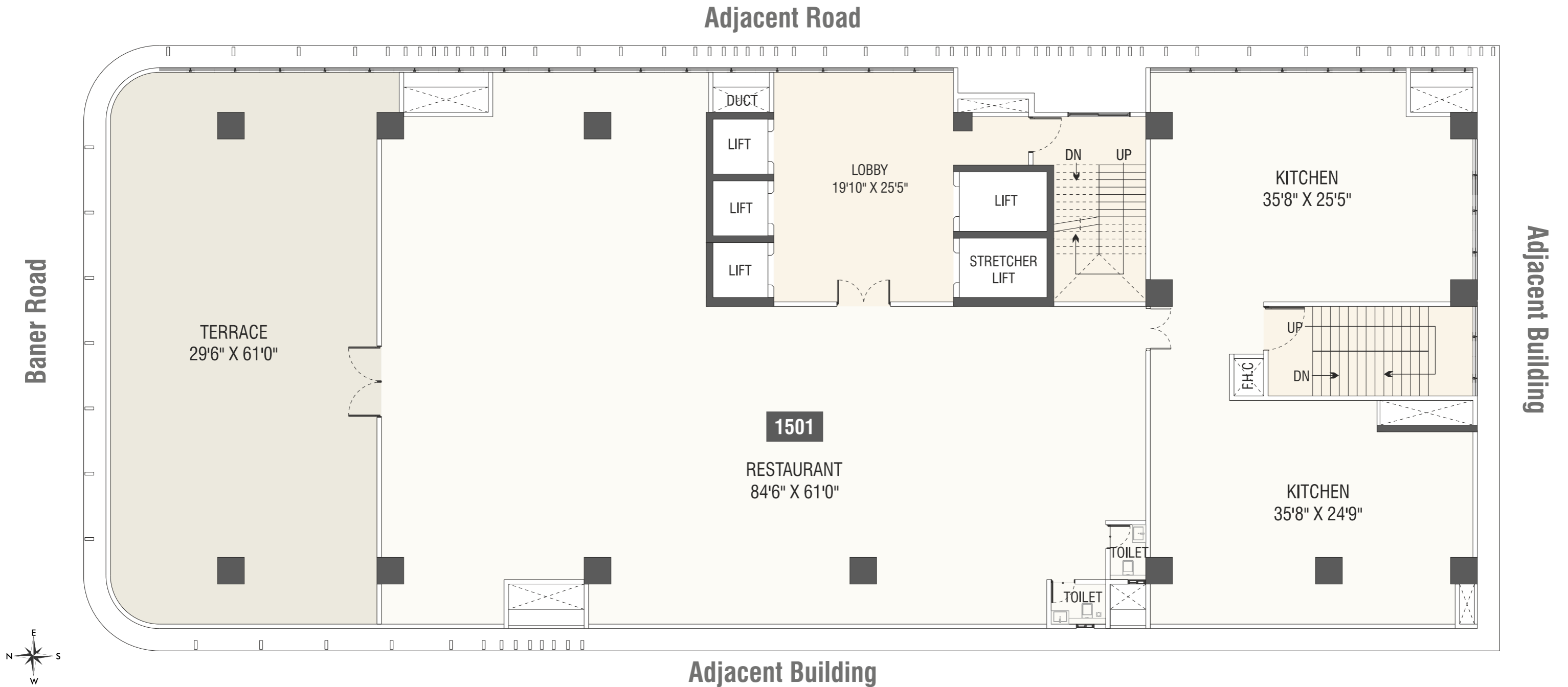


YASHADA BUSINESS ZONE  
DESTINED FOR SUCCESS



YASHADA<sup>®</sup>  
Realty Group  
Dreams, Realized

## 15TH FLOOR PLAN





**YASHADA**<sup>®</sup>  
Realty Group

Dreams, Realized

Yashada Business Zone, S.No. 84/2 Baner, Pune 411045

Call : 99224 00008



MAHA-RERA REG. NO. : P52100033897  
<https://maharera.mahaonline.gov.in/>



Disclaimer: The contents of this brochure are purely conceptual and have no legal binding on us. The developers reserve the right to amend the layout, plans, number of floors, elevation, colour scheme, specifications, amenities etc.