

A project by:



RISE UP TO SMART SPACES



**RAVI
UDAY**
1 & 2 BHK SPACIOUS HOMES
At Moshi-PCMC



REG. NO
P52100032853



30+ years of excellence in Construction & Real Estate. Over 60 projects completed across Navi Mumbai, Pune & PCMC.

The Maruti Group is defined by two words that make all the difference-Quality and Excellence. What began as a humble enterprise in 1985, has unfolded a success story of vast measures; one that has been led by the vision and guidance of its founding directors, Sunil Israni and Rajan Israni. The mantle of growth is now being carried forward by the second generation of young and dynamic leaders. With two and a half decades of creating landmarks bearing their unmistakable stamp of perfect form and feature in Navi Mumbai, the Maruti Group now brings to Pune, its unique offering.

The team of Civil Engineers and Management Professionals that has had over 30 years experience in the business, boasts of assured quality and excellence, in all projects completed till date. Every project at The Maruti Group is seismically qualified, that provides for a certain level of durability and strength, not just to the construction, but to the thousands of families residing in it.

Clarity in principle, and transparency in operations and business ethics, has enabled Maruti to successfully unite the suppliers, sub-contractors, associates and its customers under the umbrella of satisfaction. Timely possession has remained its hallmark and thousands of happy customers and over 15 lakh square feet of construction bear testimony to the dependability and distinction of the Maruti Group.



1 & 2 BHK SPACIOUS HOMES





About Ravi Uday

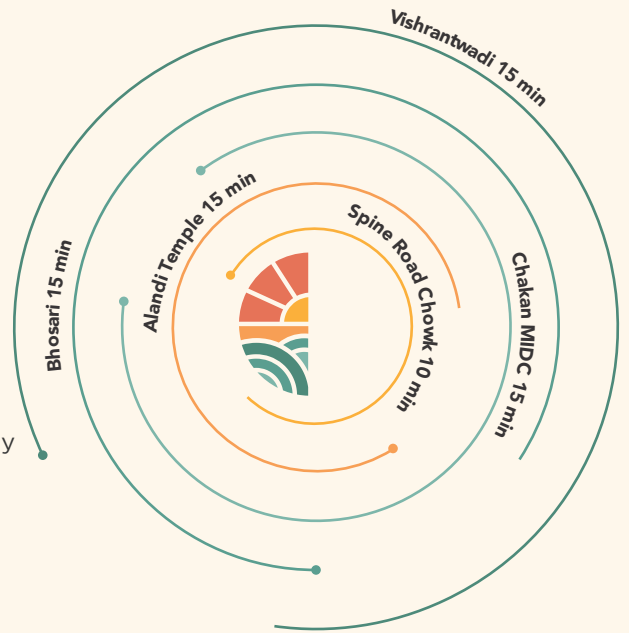
Ravi Uday stands in a place where nature, comfort, and the future intersect. It is a modern residential complex that offers thoughtfully designed homes with all contemporary amenities & facilities. It offers affordable 1 and 2 BHK homes that gracefully combine modern architecture and lifestyle. Situated at the center of the Pune Metropolitan Region, the site is close to prominent areas of Pune and PCMC.

The exceptional amenities at Ravi Uday blend in perfect harmony with the finest of quality and luxury. Experience good living in spacious apartments and lush acres that provide a welcoming distraction from the hustle and bustle of the city. Experience the bright side of life with Ravi Uday.

Rise up to Great Locality

Moshi

- Centrally located in the Pune Metropolitan region
- Well connected to important zones in Pune and PCMC
- Surrounded by Pune Alandi Road and Pune Nashik Highway
- Set amidst a good network of schools, colleges medical facilities, hospitals, markets, shopping malls, restaurants
- Well connected by public transport



Rise up to Exceptional Amenities

Amenities are smart, useful and make life at Ravi Uday a fulfilling experience. While doing so, amenities that incur heavy maintenance and upkeep costs over time are avoided and only smart eco-friendly amenities find place at this beautiful site.



Solar Water Heater
as per PCMC Rules



Designer Lobby



Landscaped Garden



Power Backup for Lifts



Children's Play Area



Solar Water Heater
as per PCMC Rules



Designer Lobby



Landscaped Garden



Children's Play Area



Power Backup
for Lifts

1 BHK & 2 BHK HOMES

Spacious spaces
with best-in-class luxuries

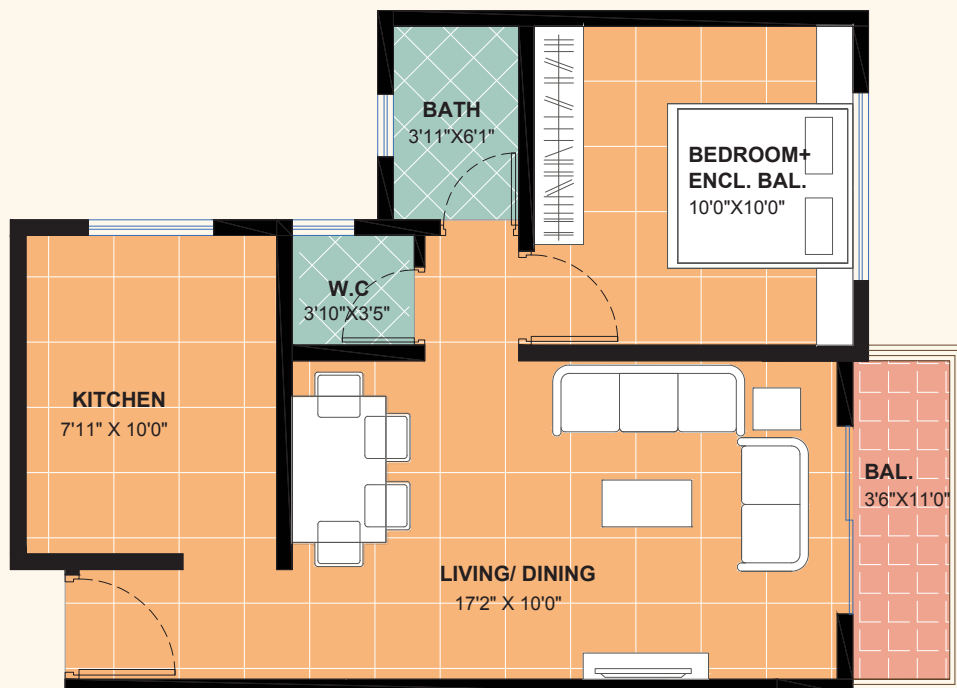
Type 01
1 BHK



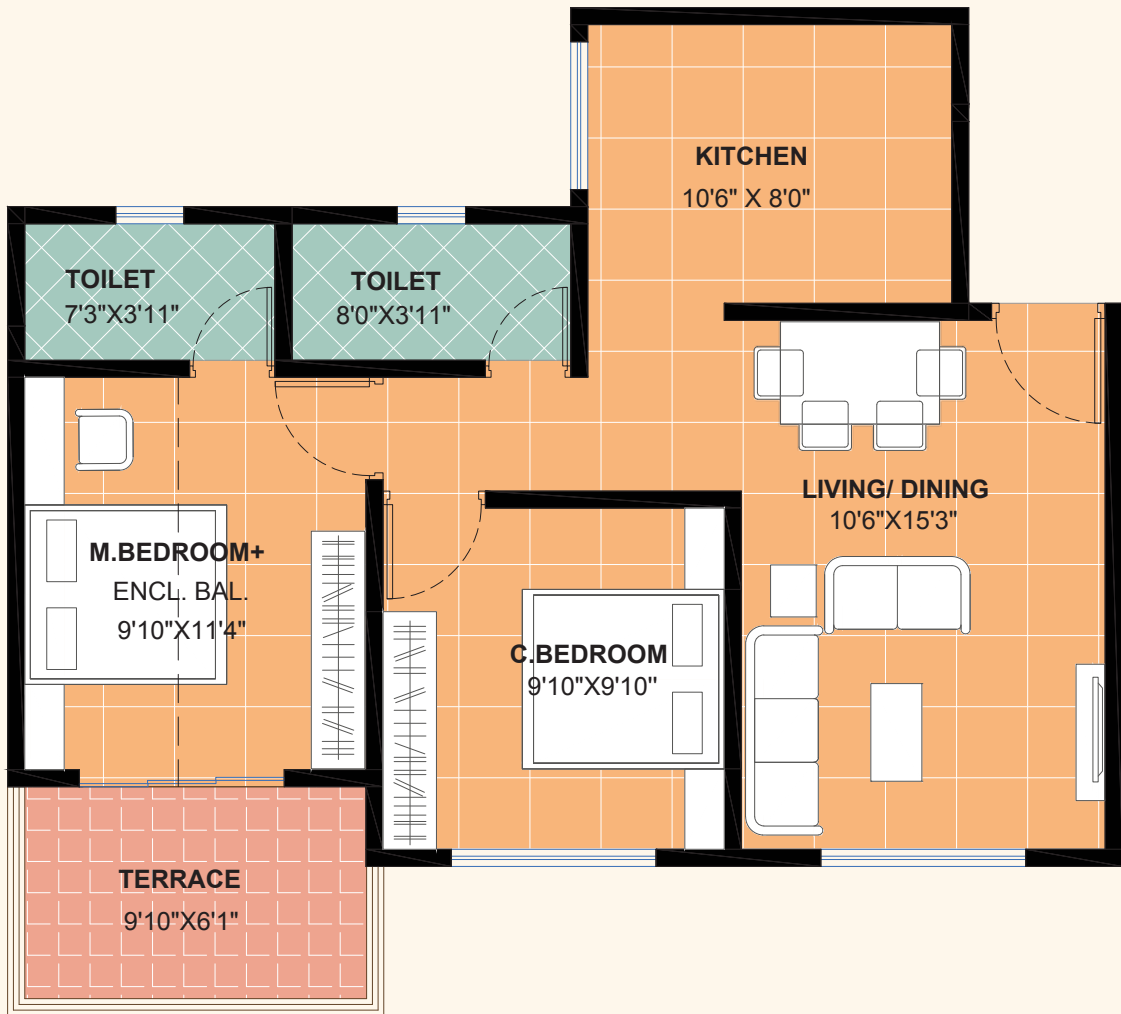
Type 02
1 BHK



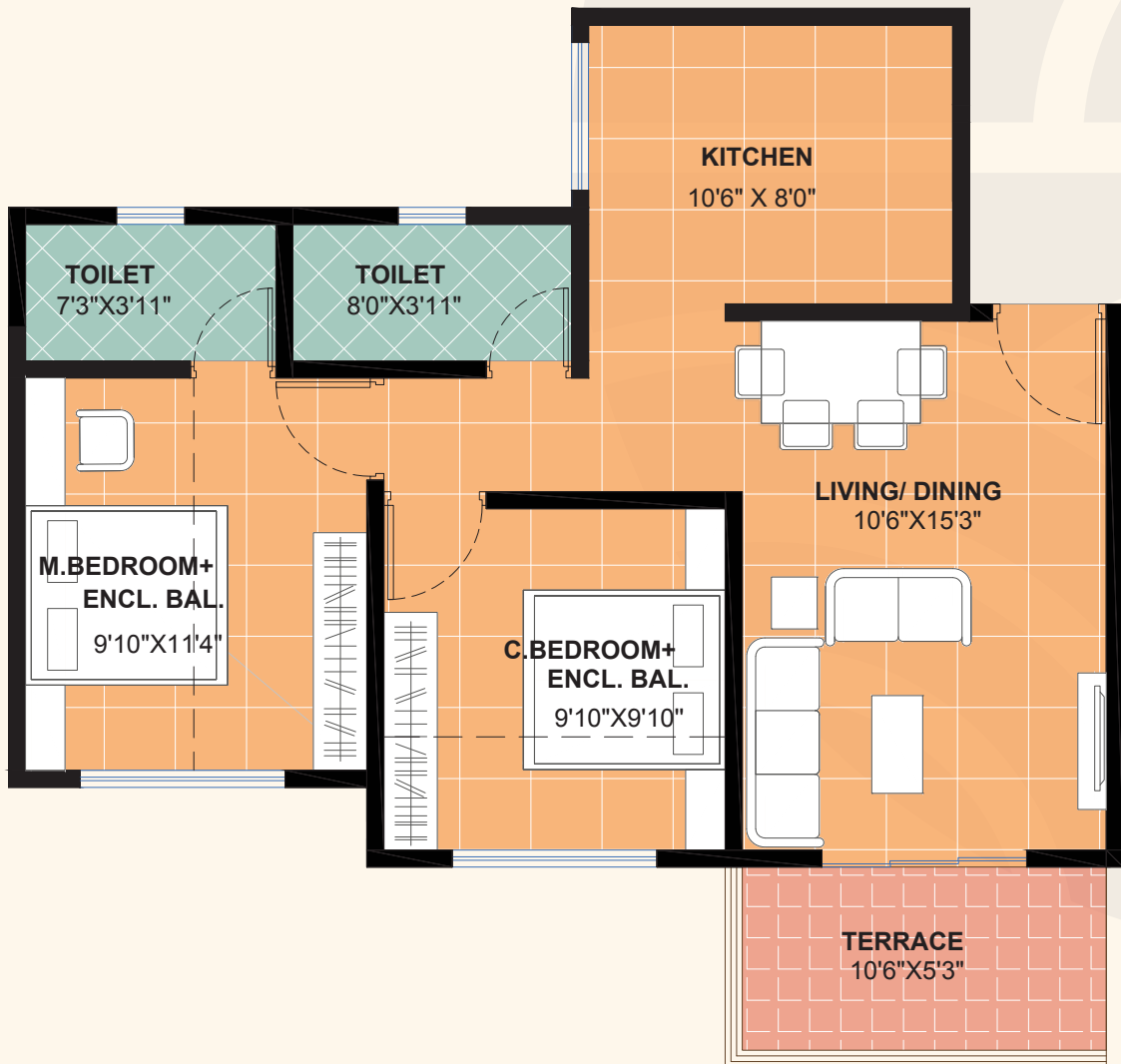
Type 03
1 BHK



Type 01
2 BHK

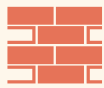


Type 02
2 BHK



Rise up to Exceptional Quality

Quality reigns over every aspect of Ravi Uday. The finishes are selected to bring contemporary style and timeless craftsmanship into perfect harmony.



Structure

RCC framed structure – Earthquake
150mm External Walls
100mm internal walls
Sand faced external plaster
Smooth finish internal plaster



Electrical Fittings

Concealed copper wiring
Good quality electric switches
TV & telephone points in living room
Lifts in all wings with Generator back up
One door bell point for each flat



Flooring

Vitrified Ceramic flooring (2' x 2')
with skirting
Rustic flooring in terrace



Kitchen

Kitchen platform with SS sink
Tile dado upto lined level along platform
Exhaust fan point
Electric point for water purifier



Windows and Doors

WPC door frames for toilets
FRP doors for Toilets/Bath and WC
Good quality flush doors for all rooms
Aluminium Sliding windows (Powder coated)
Cylindrical Locks
Water proof door frames for Toilet/bath/WC
Windows with granite sill



Toilets

Rustic flooring in toilets/bath/WC
4 ft. dado in toilet, 7 ft. dado in bath
Good quality CP & sanitary fittings
Hot & Cold water mixer
Concealed plumbing

Other

Compound wall
Flower beds
Fire Fighting as per PCMC rules



Painting

Oil bond distemper internal paint
Semi Acrylic external paint

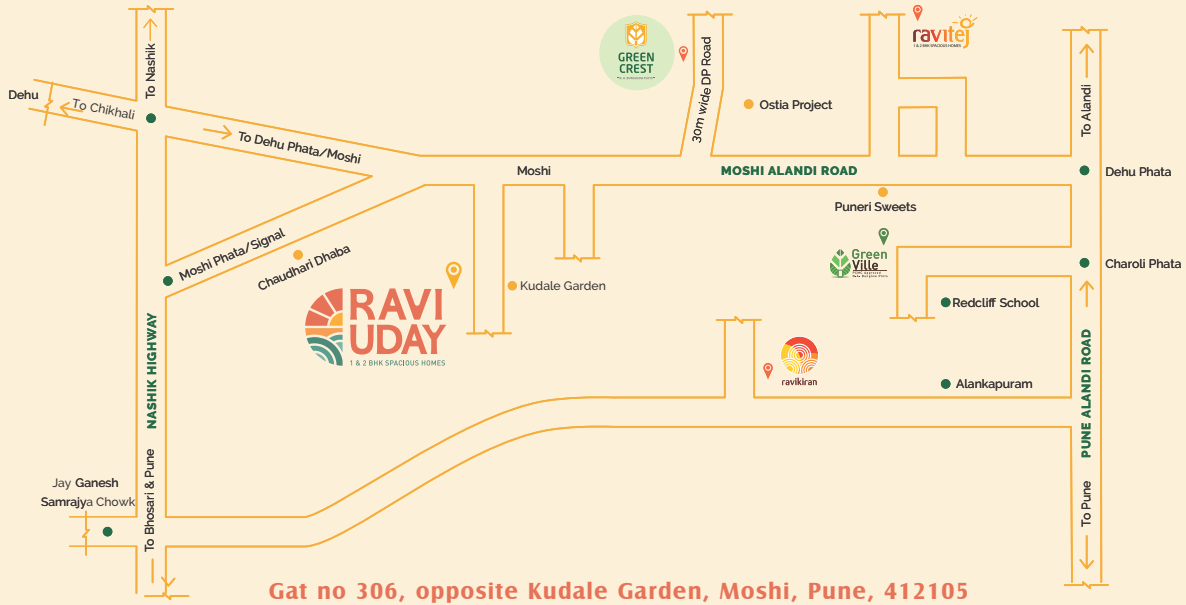
Rise up to Great Value

We understand that a home is more than 4 walls. It is home to thousands of memories and dreams. At Ravi Uday, you find your dream home at dream prices.



Rise up to Smart Location

At Ravi Uday, you are conveniently placed with all your social, religious, educational, entertainment, and daily needs being around the corner. You are a stone's throw away from the best schools, colleges, markets, malls, etc. Experience a smoother life with every convenience this close.



Key Distances

BANK & ATM

Bank of India - 1 km
Axis Bank ATM - 1.5 km

SCHOOLS

Disney Kids Pre-School - 1.1 km
DhyaniBhakti International School - 1.5 km

COLLEGES

RJSPM Dyanbhakti Junior College - 2.4 km
MIT School of Distance Education - 3.5 km

HOSPITALS

DY Patil Hospital - 2 km
Gangotri Hospital - 5 km

MALLS

Silverian Mall - 2.8 km
Moshi APMC - 5 km

RCC Consultant

Shrikhande Consultants Pvt. Ltd.
T: + 91 20 25280107
E: scplasia.pune@gmail.com

Structural Consultants

Setu Engineering
E: setueservices@gmail.com

Architect

KIMAYA ASSOCIATES
Off. No. 1, Yashopuram,
Chinchwad, Pune - 411019
T: 9552502704, 020-64104203
E: architect@kimayagroup.com

A project by:



**MARUTI
GROUP**

The many facets of quality

Lajwanti Consultants and Builders Private Limited

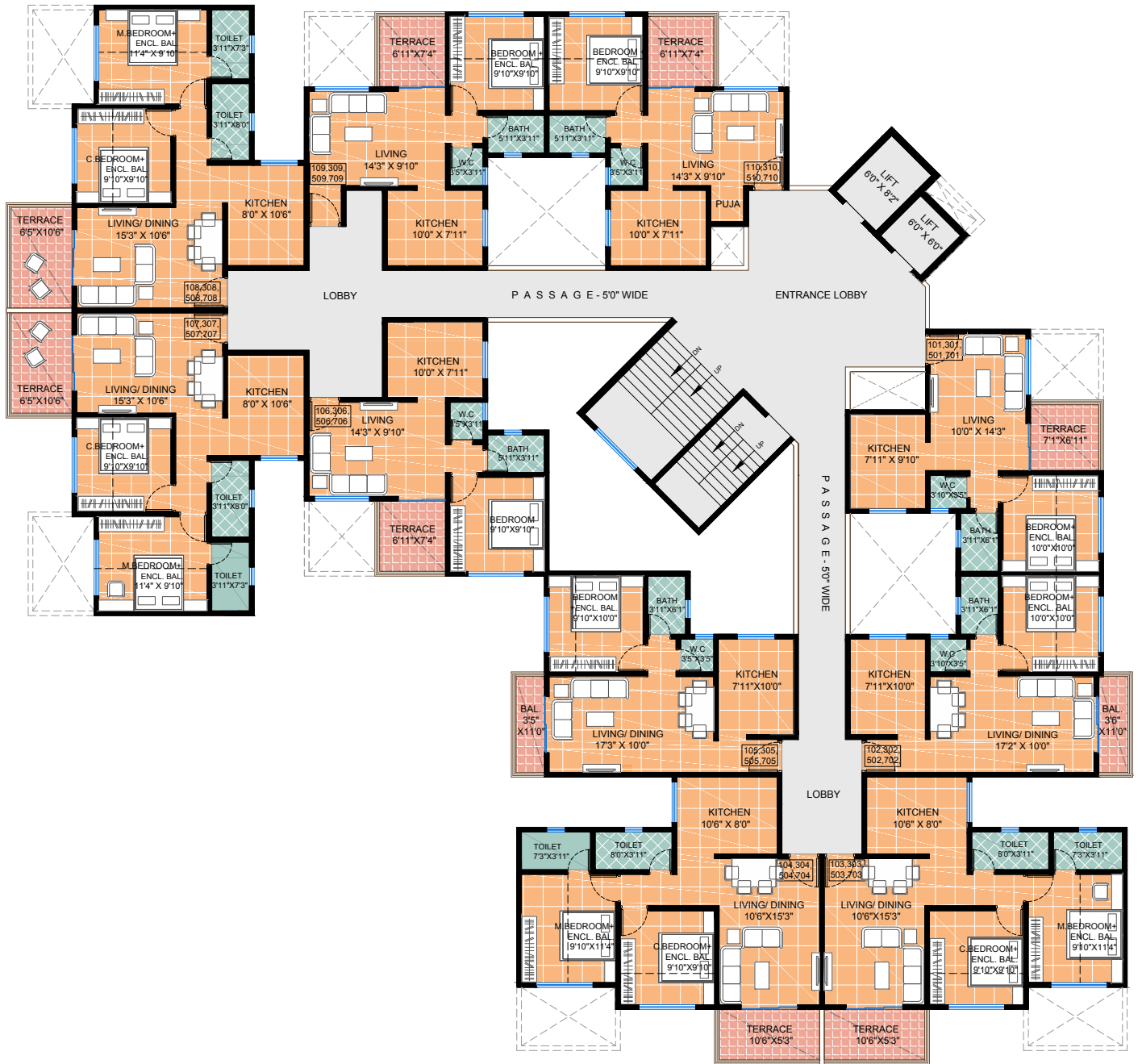
Corporate Office: Maruti House,
2nd Floor, Above Kotak Mahindra Bank
GP - 187, 'G' Block, Thermax Chowk,
MIDC Chinchwad, Pune - 411019

Tel : 020 - 27370029
Fax : 020 - 27370031
Email : info@themarutigroup.com
Website: themarutigroup.com

8749 038 038



Reg. No.
P52100032853

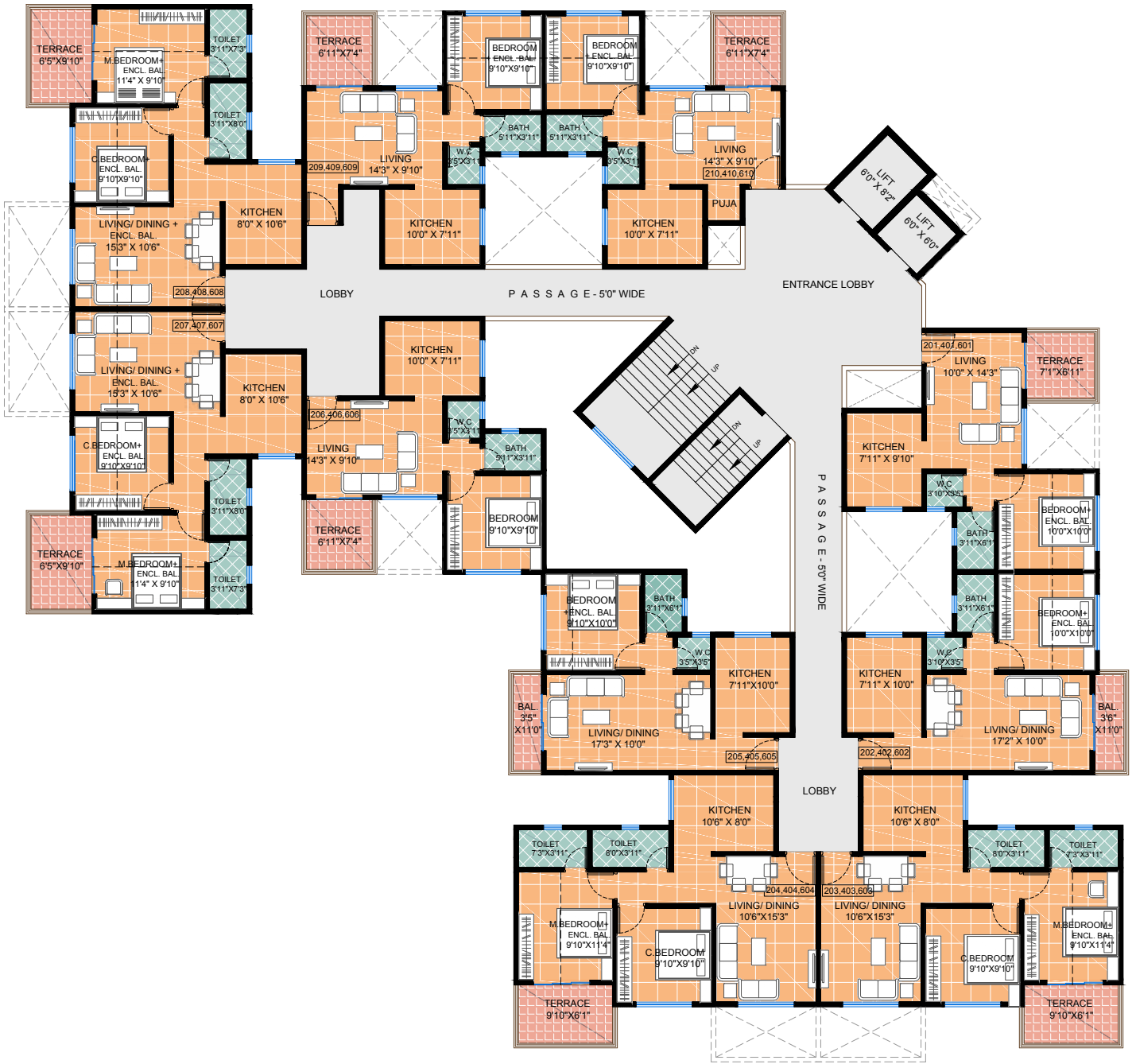


1st, 3rd, 5th AND 7th FLOOR PLAN



A project by:



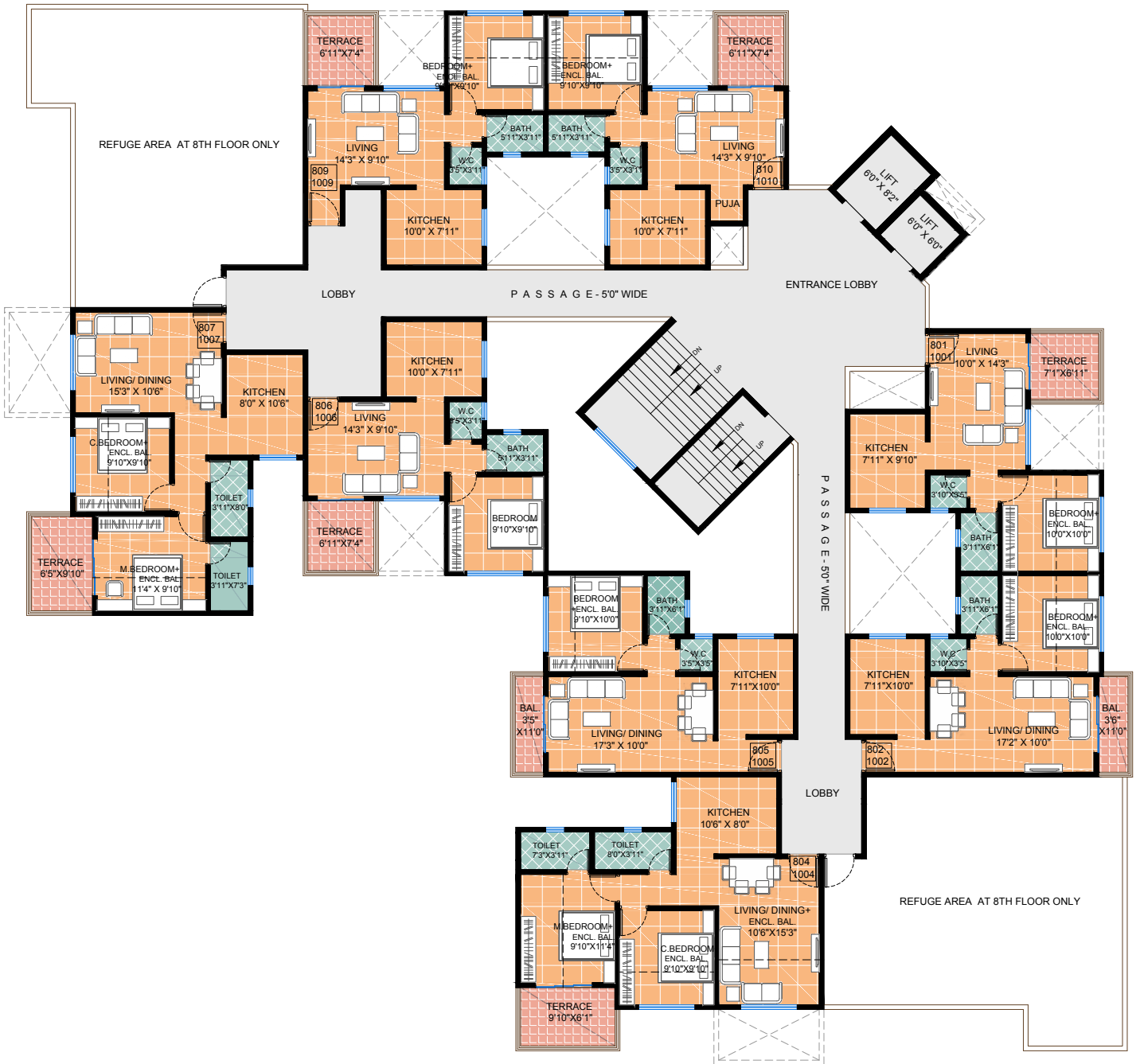


2nd, 4th AND 6th FLOOR PLAN



A project by:



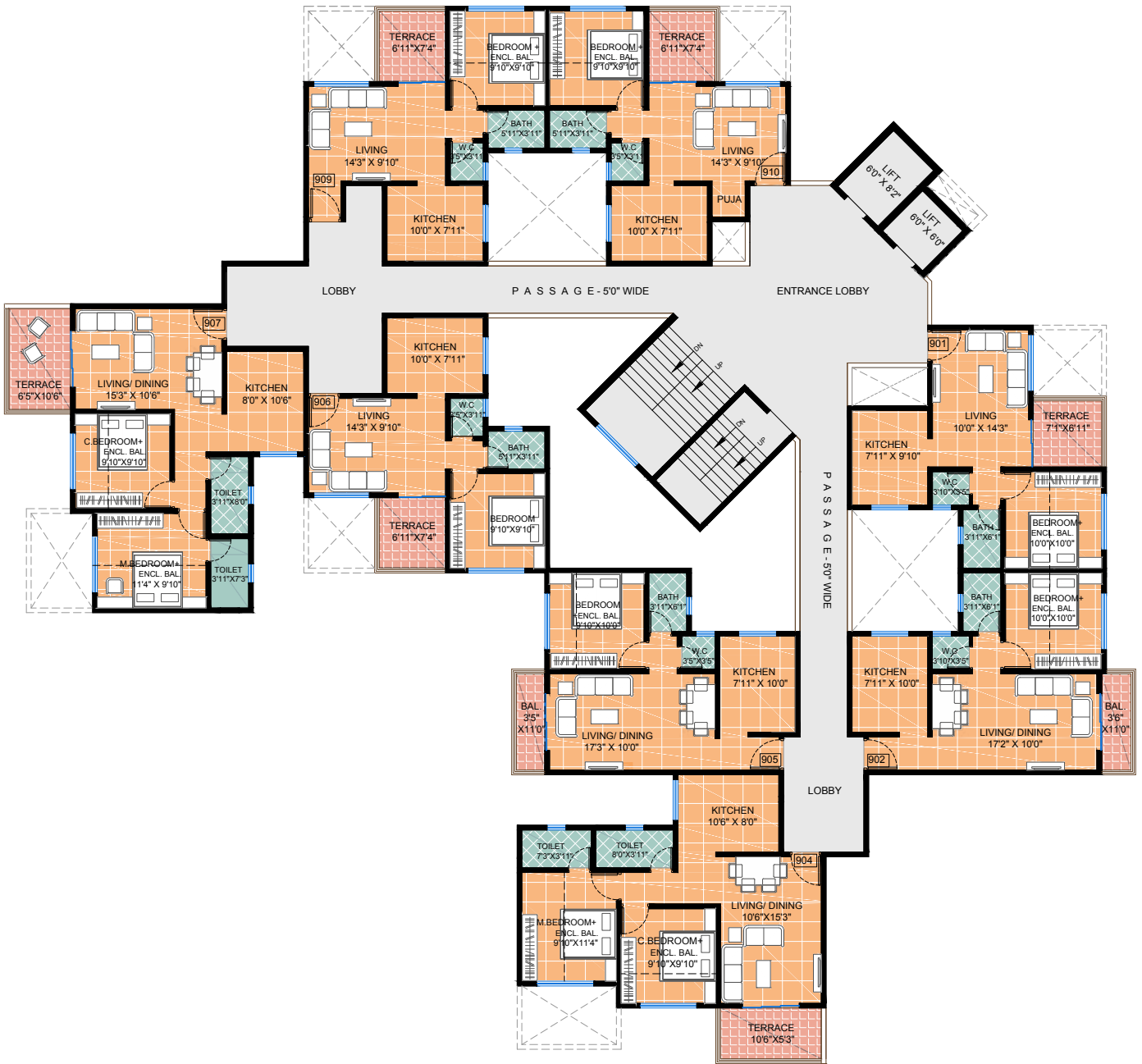


8th & 10th FLOOR PLAN



A project by:





9th FLOOR PLAN



A project by:

