

Dreamhouse Constructions Pvt. Ltd.**Corporate Office:**

Maruti House, 2nd Floor, Above Kotak Mahindra Bank,
GP - 187, 'G' Block, Thermax Chowk, MIDC,
Chinchwad, Pune - 411019

Site Address:

Ravikiran S. No. 154/2 Plot No. 2, Near Bharat Petrol Pump,
Alankapuram Road, Off Pune - Alandi Road,
Wadmukhwadi, PCMC - 412105

 **8747 069 069** info@themarutigroup.com themarutigroup.com

MahaRERA No. :
P52100045726

RCC Consultant : Setu Engineering**Architect :** Kimaya Associates**Consulting Architect :** Homework Architects

Disclaimer : This brochure is purely conceptual and not a legal offering. Images shown in this brochure are for illustrative purposes only and may not reflect the actual building elevations, clubhouse, landscaping, or layout. The final project may vary. Please refer to the agreement to sale for accurate details, specifications and amenities.



घर
मनासारखं!
अगदी हवं तसं.



**ravikiran
annexe**

Off Pune-Alandi Road, PCMC



**Embrace
A life of comfort,
Serenity, and
Sophistication
At Ravikiran Annex.**



Nestled in the tranquil and strategic location of Wadmukhwadi, off Alandi Road, this sprawling layout aims to provide 'Quality Homes for All'. Building upon the success of Ravikiran Annexe Phase 1, we are delighted to present this exquisite residential development that redefines the concept of convenient living.

This multi-winged residential complex offers over 230 flats along with 12 shops, distinguishing itself from competitors through its unmatched quality. Ravikiran Annexe combines modern architecture with a contemporary lifestyle, creating well-appointed and affordable homes. Experience the joy of living in a meticulously designed and thoughtfully executed residential project that truly understands your needs and aspirations.

Come and be a part of Ravikiran Annex, where luxury meets convenience, and quality homes are built with passion and integrity.





घर मनासारखं!

तुमच्या जीवनेलीला साजेसं,
अगदी हवं तसं.



**Enjoy a life that is
Comfortable, convenient,
And truly fulfilling.**

At Ravikiran Annex, we offer a lifestyle that combines affordability with contemporary living, where you can enjoy the best of both worlds. We prioritize your comfort and convenience, offering thoughtfully designed living spaces that maximize functionality and style. Whether you choose to stay indoors or roam around the complex, you'll find modern amenities and features that enhance your everyday living. Embrace a lifestyle where every day feels like a celebration, surrounded by offerings and facilities that enhance your living experience.

This beautifully curated project creates a nurturing environment that fosters a sense of community, where neighbors become friends, and memories are made.





घर मनासारखं!

आधुनिक सुविधांनी नटलेलं,
अगदी हवं तसं.

Unwind and recharge Yourself in luxurious Amenities that inspire.

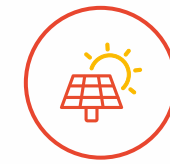
At Ravikiran Annex, we believe in providing residents with a well-rounded and enriching living experience through a range of modern amenities. We ensure that no compromises are made when it comes to offering top-notch facilities. Step into a world where you can relax and rejuvenate amidst lush landscaped gardens, providing a serene and tranquil environment. For the little ones, dedicated play areas are available, ensuring they have a safe and enjoyable space to unleash their energy and creativity. Residents can also gather and socialize at the vibrant community clubhouse, fostering a sense of community and belonging. Our project is designed to provide a holistic and fulfilling lifestyle for residents of all ages.



CHILDREN'S
PLAY AREA



LANDSCAPED
GARDENS



SOLAR WATER
HEATER



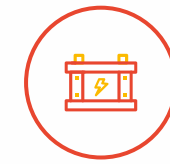
STP FOR WATER
RECYCLING



CLUB
HOUSE



DESIGNER
ENTRANCE LOBBY



POWER
BACK-UP



CCTV CAMERA
ON SELECTED AREA





घर मनासारखं!

पाहताक्षणी मनात भरेल असं,
अगदी हवं तसं.



Experience the joy of living In a meticulously planned Residential project



Quality is the cornerstone of Ravikiran Annex. We take immense pride in our commitment to delivering superior craftsmanship and uncompromising quality. From the selection of premium materials to the finest finishes, every aspect of our project is crafted with precision and attention to detail. Our team of experienced architects, engineers, and designers have meticulously planned every aspect of Ravikiran Annex to offer you a lifestyle that is unparalleled. Ravikiran Annex is a testament to our dedication to providing affordable yet modern homes without compromising on quality.



STRUCTURE

- RCC framed structure – Earthquake
- 150mm External Walls
- 100mm internal walls
- Sand-faced external plaster
- Smooth finish internal plaster



FLOORING

- Vitrified Ceramic flooring (2' x 2') with skirting
- Rustic flooring in terrace



TOILETS

- Rustic flooring in toilets/bath/WC
- 7ft. Dado for toilets/bath/WC
- Good quality CP & sanitary fittings
- Hot & Cold water mixer
- Concealed plumbing



WINDOWS AND DOORS

- FRP Doors
- WPC door frames for toilets.
- Solid Wooden door frames for rooms
- Good quality flush doors for all rooms
- Aluminium Sliding Windows (Powder coated)
- Cylindrical Locks
- Waterproof door frames for Toilet/bath/WC



ELECTRICAL FITTINGS

- Concealed copper wiring
- Good quality electric switches
- TV & telephone points in living room
- Lifts in all wings with Generator back-up
- One doorbell point for each flat



KITCHEN

- Granite kitchen lintel platform with stainless steel sink
- Tile dado up to lined level along the platform
- Exhaust fan point
- Electric point for water purifier



PAINTING


- Oil bond distemper internal paint
- Semi Acrylic external paint



OTHER

- Decorative compound wall
- Flower beds
- Fire Fighting as per PCMC rules

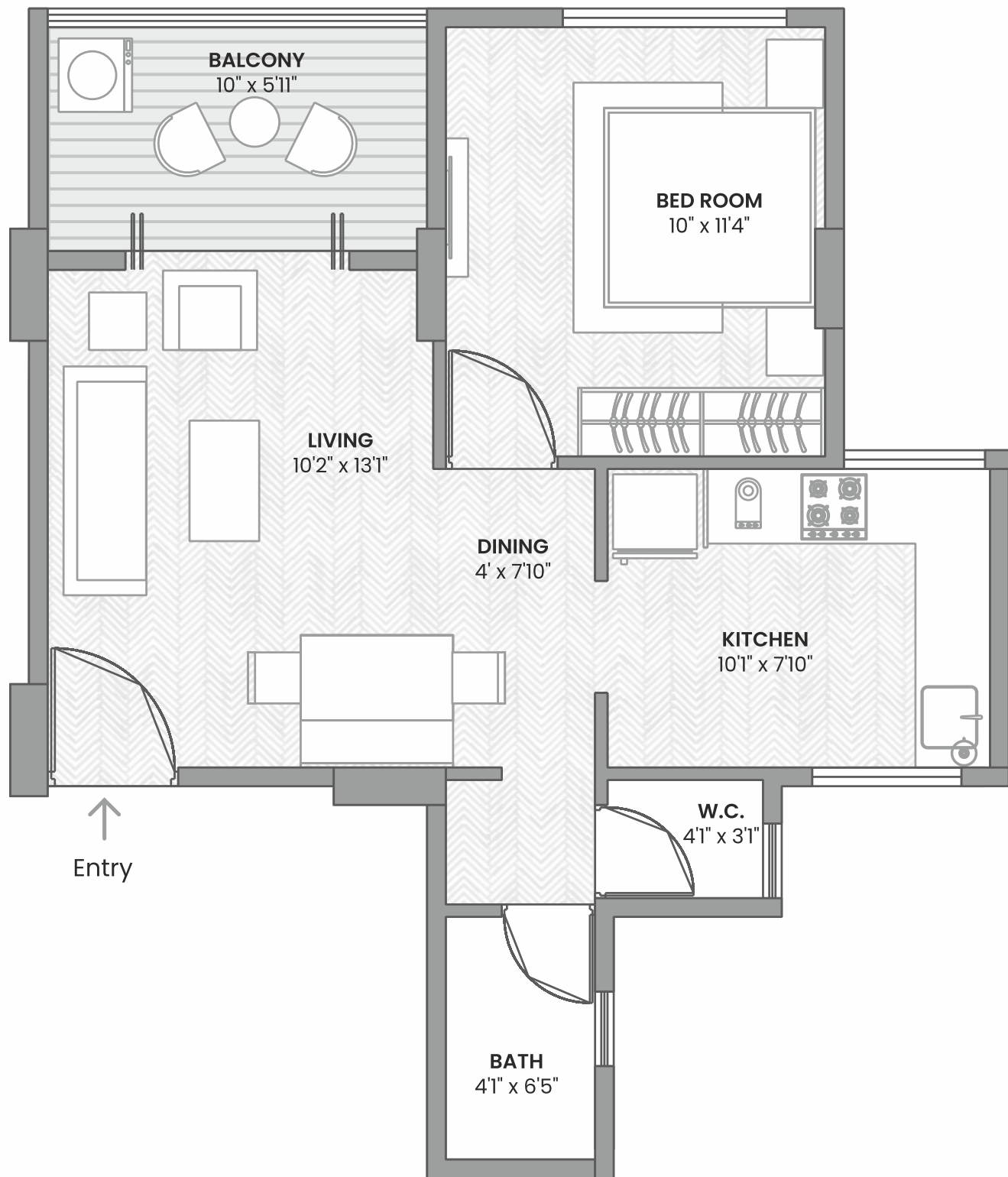




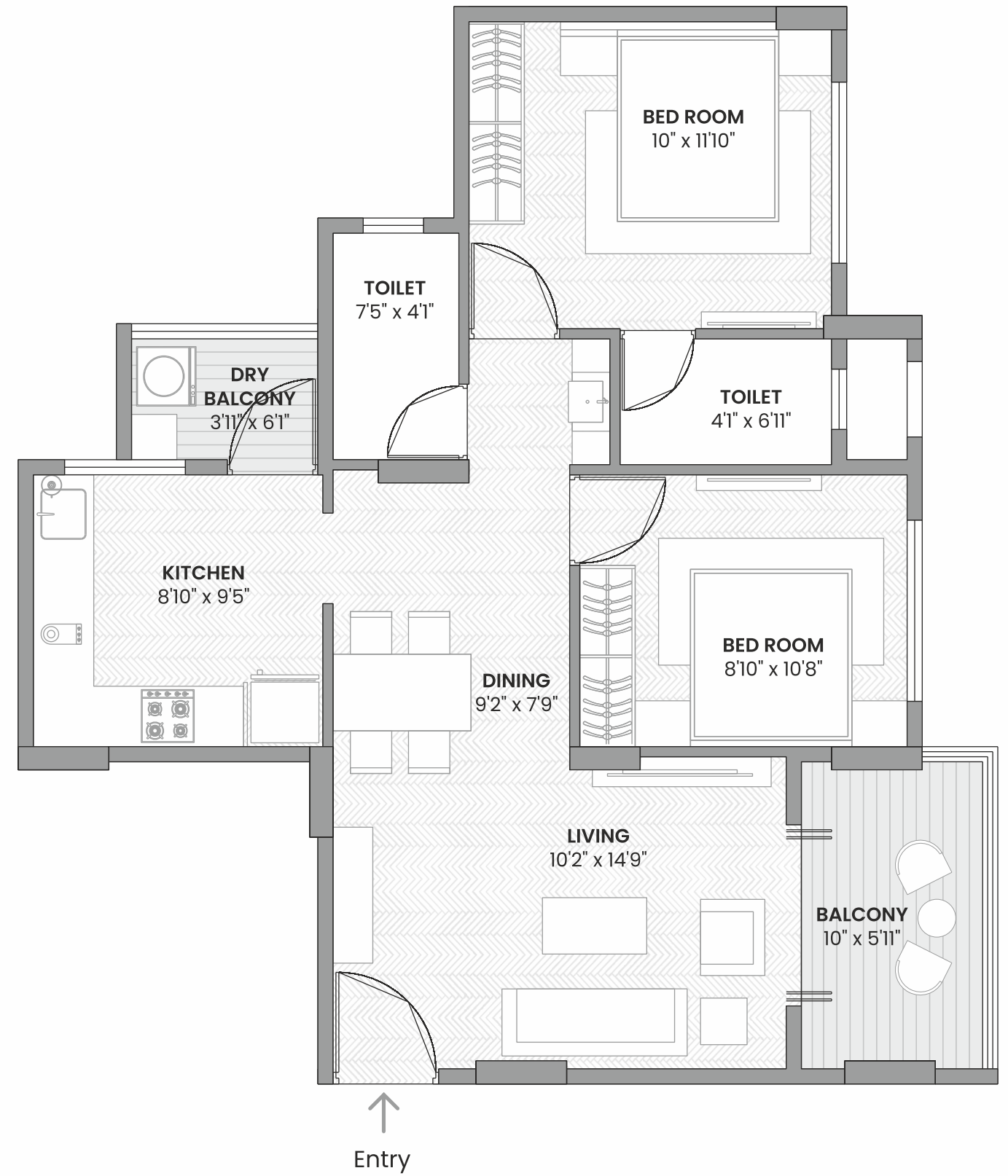
Modern living Experience that is Tailored to your Unique preferences.

With modern architecture and thoughtful design, each living space is optimized for comfort, functionality, and aesthetic appeal. We understand the importance of efficient space planning and flexible floor plans to suit the diverse needs and preferences of homeowners. Our modern real estate project offers a wide range of thoughtfully designed floor plans that maximize functionality and enhance livability. Each layout takes into consideration the new-age lifestyle, offering ample storage space, well-appointed bedrooms, modern kitchens, and comfortable living areas. At Ravikiran Annex, we strive to provide you with the perfect blend of aesthetics and practicality, ensuring that your home is not just beautiful but also functional.

Typical 1BHK
Carpet - 483 SQ.FT.



Typical 2BHK
Carpet - 700 SQ.FT.



Ravikiran Annexe Bldg. No. 6







घर मनासारखं!

तुमच्या जीवनेलीला साजेसं,
अगदी हवं तसं.



A modern living experience In a well-connected and Sought-after location.

Situated in the serene surroundings of Alandi, our project offers a tranquil and peaceful atmosphere, away from the hustle and bustle of the city. Yet, it boasts excellent connectivity to key locations, ensuring that you stay well-connected to important zones of Pune and PCMC. Additionally, the proximity to renowned educational institutions, shopping centers, and medical facilities ensures that all your daily needs are within easy reach. Take the advantage of a strategic location, where you can enjoy the benefits of urban living while being nestled in a serene and peaceful environment.

Key Distance

Wadmukhwadi 0 km	RKL School 0.5 km	Sai Temple 2.5 km
Spine Road Chowk 2.5 km	Dehu Phata 3 km	Magzine Chowk 3.5 km
MIT College Alandi 3.7 km	Alandi Temple 4.0 km	Bhosari 4.9 km
D Mart 8.3 kms	Vishrantwadi 11 km	Nashik Fata Metro Stn. 11 km
Pune Airport 14 km	Chakan 15 km	Pune Station 18 km
Shivaji Nagar 18 km	Hinjewadi 20 km	







Building a legacy of Exceptional living

Maruti Group is a name synonymous with Quality Excellence, which has been the driving force behind its success since its inception in 1985. Founded by Sunil Israni and Rajan Israni, the group has grown exponentially over the years under their visionary leadership. Today, the second generation of dynamic leaders is carrying forward the mantle of growth, ensuring the continuation of the group's remarkable journey. With a track record of creating landmarks in Navi Mumbai, the Maruti Group now brings its unique offering to Pune.

The team at Maruti Group comprises highly skilled Civil Engineers and Management Professionals with over 35 years of experience in the industry. Their expertise and commitment to quality and excellence are evident in every project. Each project is meticulously designed and constructed to meet stringent quality standards, ensuring durability and strength for not just the buildings but also for the thousands of families who call them home.

Maruti Group prides itself on its clarity in principles, transparency in operations, and adherence to ethical business practices. Timely possession has always been their hallmark. With thousands of happy customers and over 15 lakh square feet of construction, the group's dependability and distinction are evident.

Maruti Group continues to innovate and evolve, bringing its unwavering commitment to quality, excellence, and customer satisfaction to every project. Their legacy of success and the trust they have built with their stakeholders make Maruti Group a name synonymous with reliability and distinction in the real estate industry.

Our Milestones

@ PUNE & PCMC

