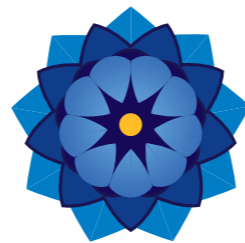




# URBAN HOMES

Project by



**LOTUS**  
Building ideas for better living



ARTISTIC IMPRESSION





ARTISTIC IMPRESSION



ARTISTIC IMPRESSION





ARTISTIC IMPRESSION





ARTISTIC IMPRESSION





ARTISTIC IMPRESSION





ARTISTIC IMPRESSION







ARTISTIC IMPRESSION





ARTISTIC IMPRESSION





ARTISTIC IMPRESSION





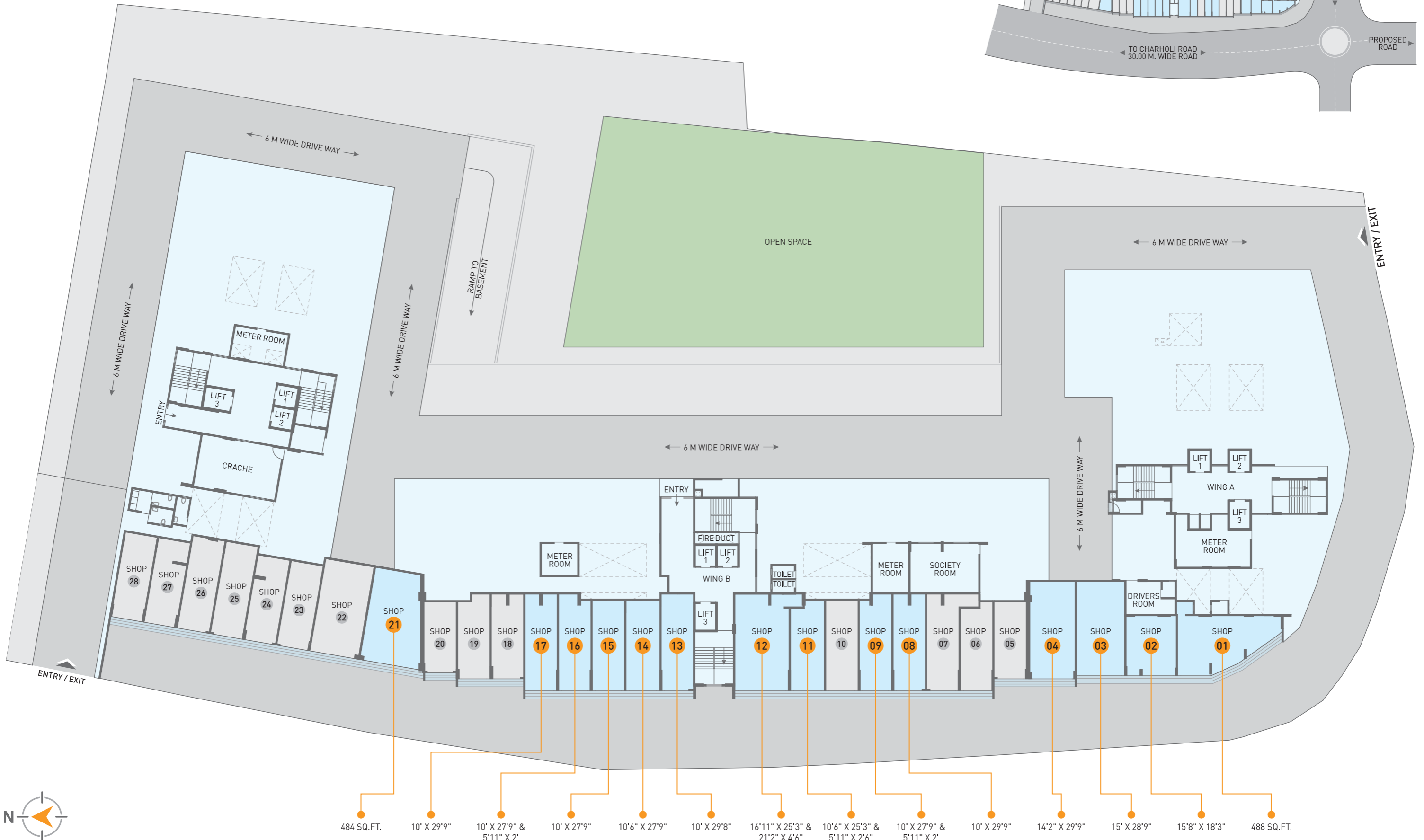
A Wing

B Wing

C Wing

ARTISTIC IMPRESSION





- 484 SQ.FT.
- 10' X 29'9"
- 10' X 27'9" & 5'11" X 2'
- 10' X 27'9"
- 10'6" X 27'9"
- 10' X 29'8"
- 16'11" X 25'3" & 21'2" X 4'6"
- 10'6" X 25'3" & 5'11" X 2'6"
- 10' X 27'9" & 5'11" X 2'
- 10' X 29'9"
- 14'2" X 29'9"
- 15' X 28'9"
- 15'8" X 18'3"
- 488 SQ.FT.







ARTISTIC IMPRESSION





ARTISTIC IMPRESSION







ARTISTIC IMPRESSION





**FIRST FLOOR PLAN**  
**A - WING** | 1<sup>ST</sup> FLOOR





# TYPICAL FLOOR PLAN

A - WING | 2<sup>ND</sup>, 3<sup>RD</sup>, 4<sup>TH</sup>, 5<sup>TH</sup>, 6<sup>TH</sup>, 7<sup>TH</sup>, 9<sup>TH</sup>, 10<sup>TH</sup>, 11<sup>TH</sup>, 12<sup>TH</sup> & 14<sup>TH</sup> FLOOR





# REFUGE FLOOR PLAN

A - WING | 8<sup>TH</sup> & 13<sup>TH</sup> FLOOR





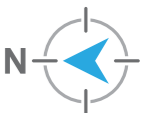
**FIRST FLOOR PLAN**  
**B - WING** | 1<sup>ST</sup> FLOOR





# TYPICAL FLOOR PLAN

**B - WING** | 2<sup>ND</sup>, 3<sup>RD</sup>, 4<sup>TH</sup>, 5<sup>TH</sup>, 6<sup>TH</sup>, 7<sup>TH</sup>, 9<sup>TH</sup>, 10<sup>TH</sup>, 11<sup>TH</sup>, 12<sup>TH</sup> & 14<sup>TH</sup> FLOOR





# REFUGE FLOOR PLAN

B - WING | 8<sup>TH</sup> & 13<sup>TH</sup> FLOOR



# UNIT PLAN

## A - WING



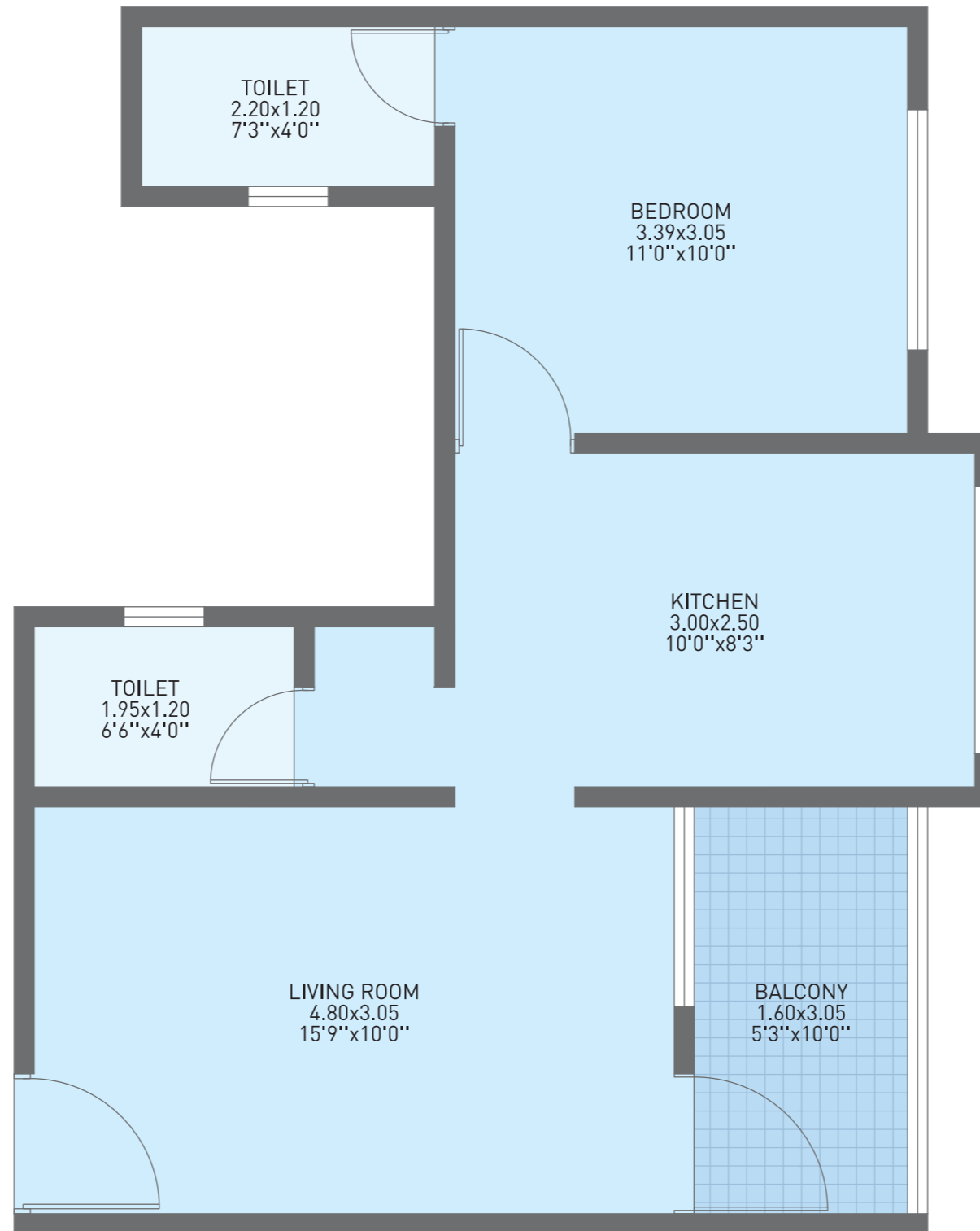
### 2 BHK FLAT

FLAT CARPET SQ.M	BALCONY SQ.M	TOTAL CARPET AREA SQ.M
59.38	4.76	64.14



# UNIT PLAN

## A - WING

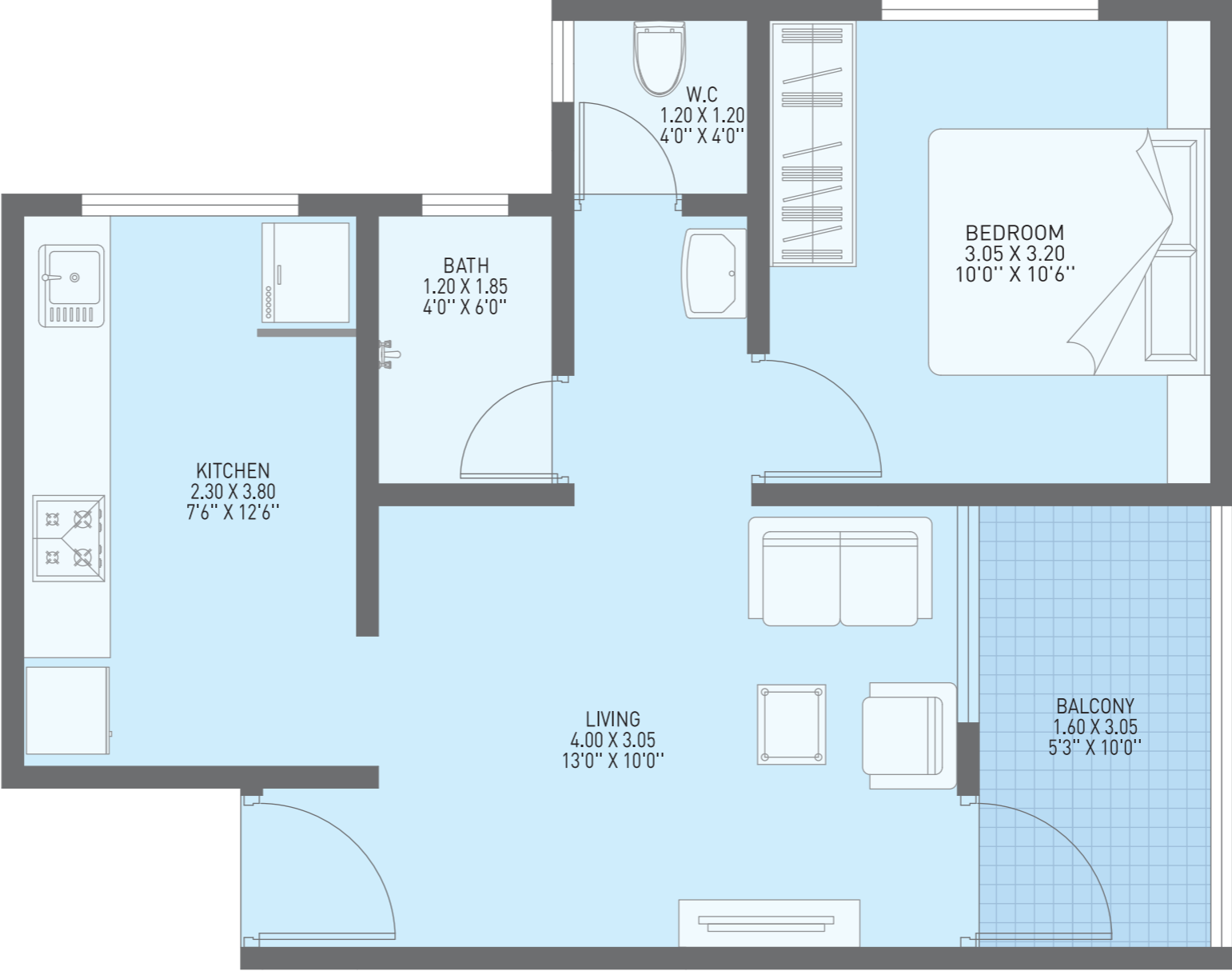


### 1 BHK FLAT

FLAT CARPET SQ.M	BALCONY SQ.M	TOTAL CARPET AREA SQ.M
42.37	4.76	47.13

# UNIT PLAN

## A - WING

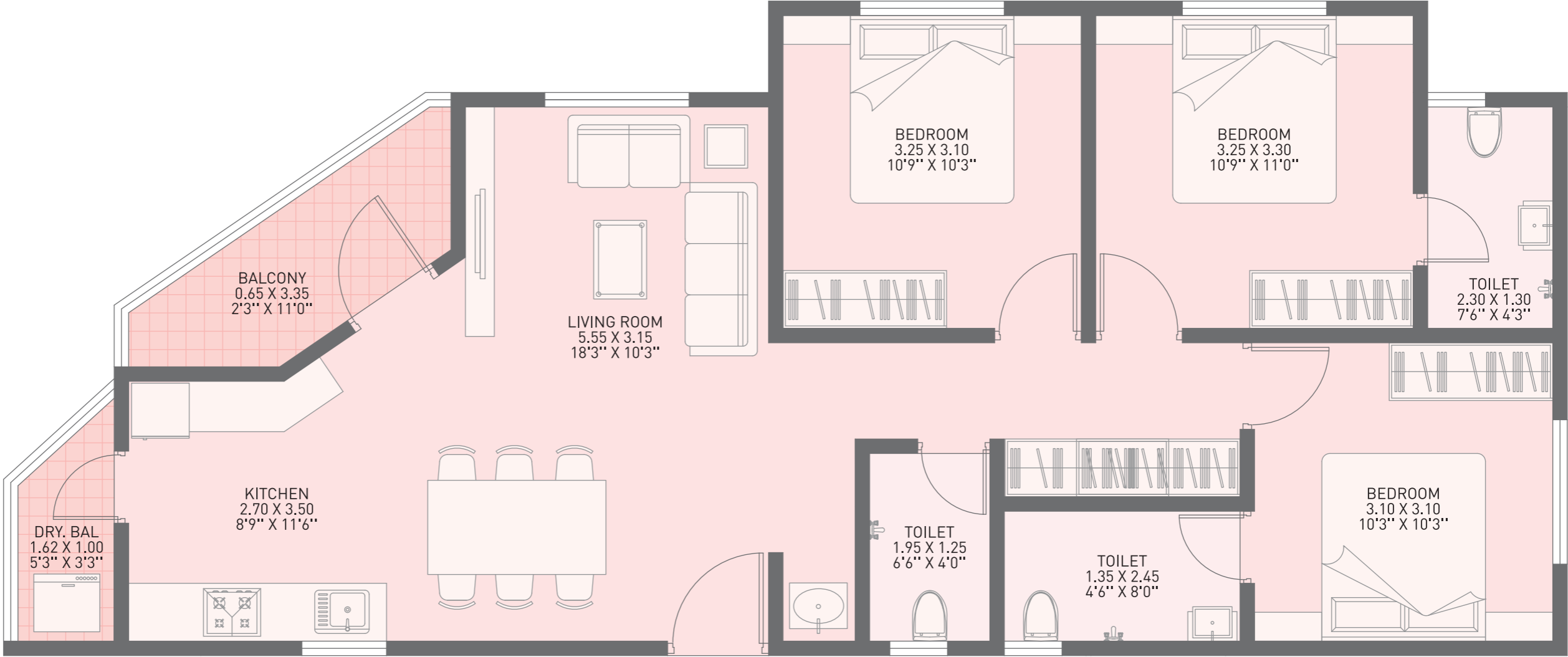


### 1 BHK FLAT

FLAT CARPET SQ.M	BALCONY SQ.M	TOTAL CARPET AREA SQ.M
39.59	4.76	44.35

# UNIT PLAN

## A - WING



### 3 BHK FLAT

FLAT CARPET SQ.M	BALCONY SQ.M	TOTAL CARPET AREA SQ.M
79.43	6.47	85.90

# UNIT PLAN

## B - WING

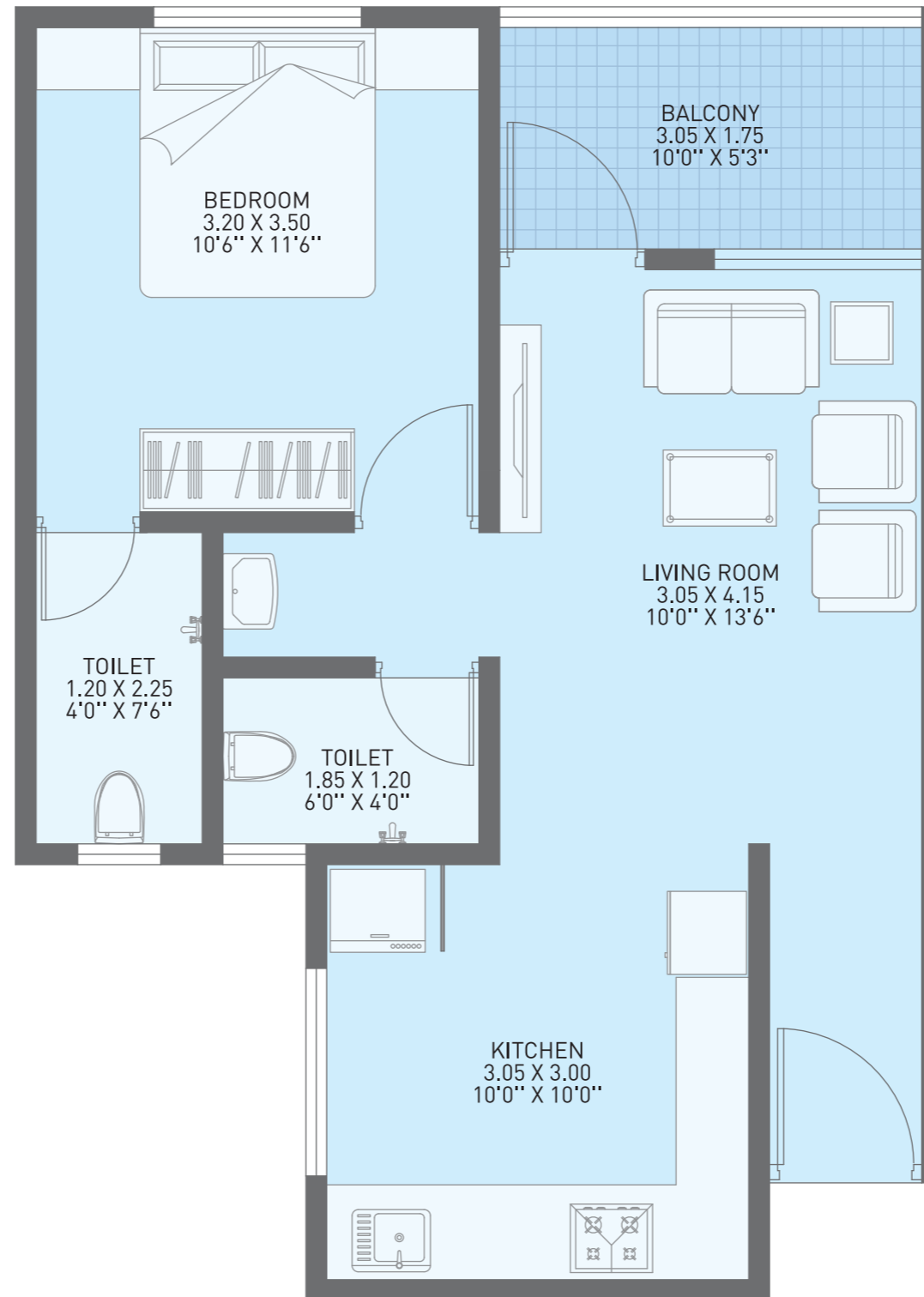


### 2 BHK FLAT

FLAT CARPET SQ.M	BALCONY SQ.M	TOTAL CARPET AREA SQ.M
59.08	4.76	63.84

# UNIT PLAN

## B - WING



### 1 BHK FLAT

FLAT CARPET SQ.M	BALCONY SQ.M	TOTAL CARPET AREA SQ.M
44.45	4.76	49.21

# SPECIAL FEATURES OF THE PROJECT

## Security

- 24x7 security
- CCTV surveillance in common areas
- Security cabin

## Entry

- Attractive entrance and exit gate
- Owner information board for each wing
- Notice board for each wing

## Internal Roads

- Internal roads with Trimix/Block finish
- Street lights with LED / CFL fittings

## Common Amenities

- Power backup for common area lights and pumps
- Fire fighting system
- Energy efficient common area lights
- Common toilet on ground floor
- Lift with ARD device and power backup
- Auto water level management system for overhead tanks
- Dedicated society office
- Driver room with toilet

## Green Amenities

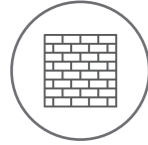
- Rainwater harvesting
- Sewage treatment plant (STP)
- Tree plantations
- Solar water heating system
- Organic waste composting (OWC)
- Garbage chute for each wing
- Provision of Hume pipes with chamber at ground level only for piped gas supply
- Provision for EV charging point



# PROJECT AMENITIES



# Specifications



## STRUCTURE:

- Earthquake resistant RCC Frame structure
- Internal & External walls - 150 MM thick AAC blocks
- Gypsum plaster to internal walls
- Cement sand faced plaster to external walls



## TILES:

- Standard make ceramic wall/floor tiles in Toilets, Bathrooms, WC
- Standard make Vitrified tiles for entire flat
- Standard make ceramic anti-skid tiles for Terrace & Lobbies
- Black granite counter with stainless steel sink in Kitchen



## ELECTRICAL:

- Concealed electrification using pipes and fittings as per ISI code
- Concealed wiring using wires as per ISI code



## PAINTING:

- Internal painting using oil bound distemper
- External painting using weatherproof exterior emulsion



## PLUMBING & DRAINAGE:

- Concealed plumbing using CPVC pipes and standard fittings as per ISI code in Bathrooms, WC, Toilet & Kitchen
- External plumbing using UPVC pipes and standard fittings
- Drainage SWR pipes and standard fittings as per ISI code



## DOORS AND WINDOWS:

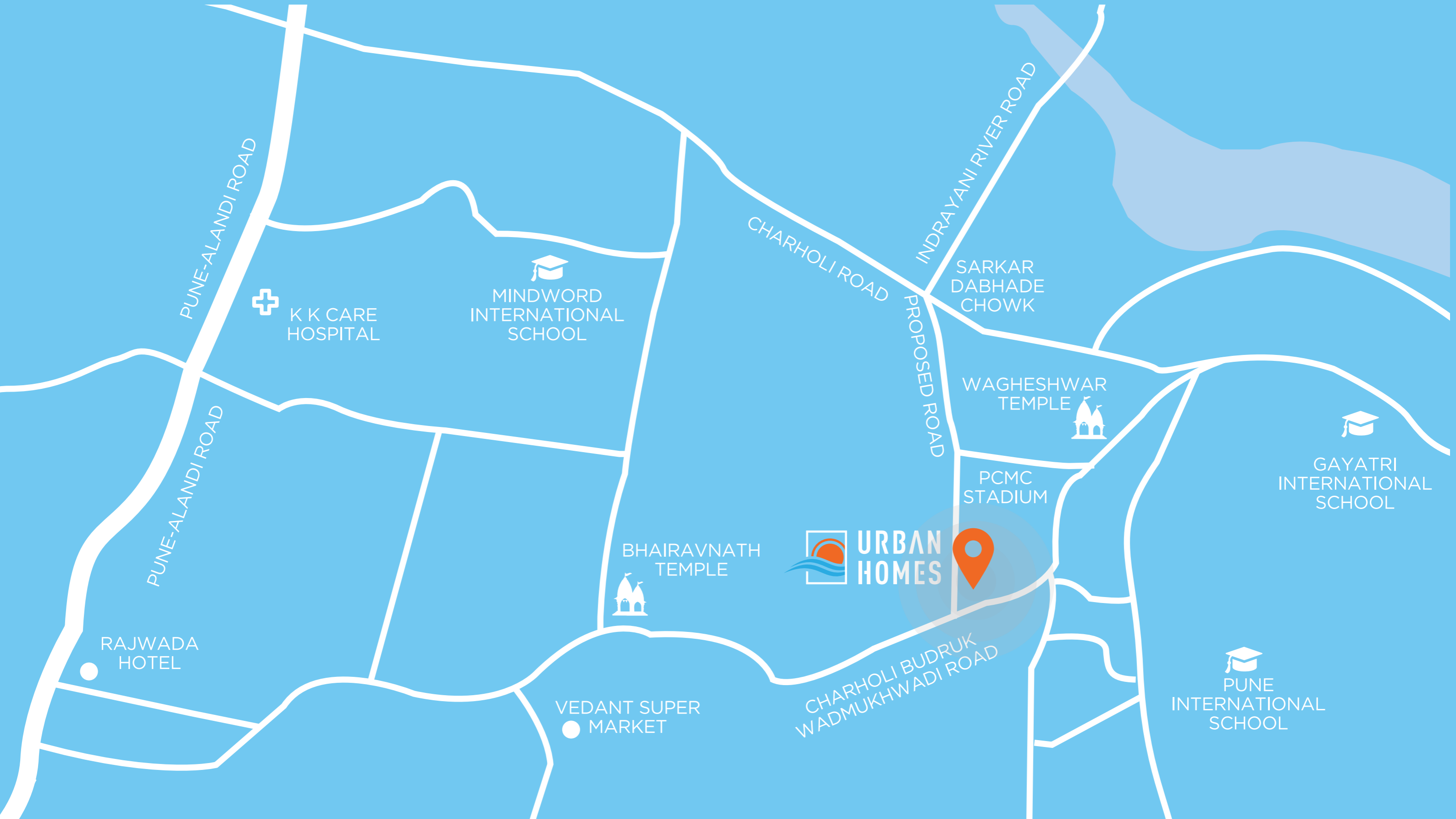
- Standard quality plywood door frames for main door & Bedroom door
- Granite door frames for toilets
- Standard quality both side pre laminated flush doors for entire flat
- Standard quality aluminium powder coated three track windows with Mosquito net
- Standard quality MS grills in Bedroom & Kitchen
- Standard quality MS railing for exclusive Terrace



## FIXTURES:

- Standard quality CP accessories for Toilets, Bathrooms, WC
- Standard quality sanitaryware for Toilets, Bathrooms, WC





## KEY DISTANCES

Alandi:	5.7 km	Vishrantwadi:	10.8 km
Dighi:	6 km	PCMC Bhavan:	13 km
Bhosari:	8 km	Dapodi:	15 km
Moshi:	9.5 km	Nigdi:	16.8 km

Project by



**CORPORATE ADDRESS:** LOTUS ICON, Plot No. 329,  
Sector No. 27A, PCNTDA, Nigdi, Pune - 411044

**Site Address:** S. No. 413/1/1 & 413/2, Charholi, PCMC, Pune - 412105

**CONTACT:** 8956 4868 00/01/02

**WEBSITE:** [www.lotusurbanhomes.com](http://www.lotusurbanhomes.com)



MAHA RERA NO.  
P52100048902



MAHA RERA NO.  
P52100047919

