



MAHA RERA REG. No.  
**P52100029949**  
[www.maharera.mahaonline.gov.in](http://www.maharera.mahaonline.gov.in)



# Skyline

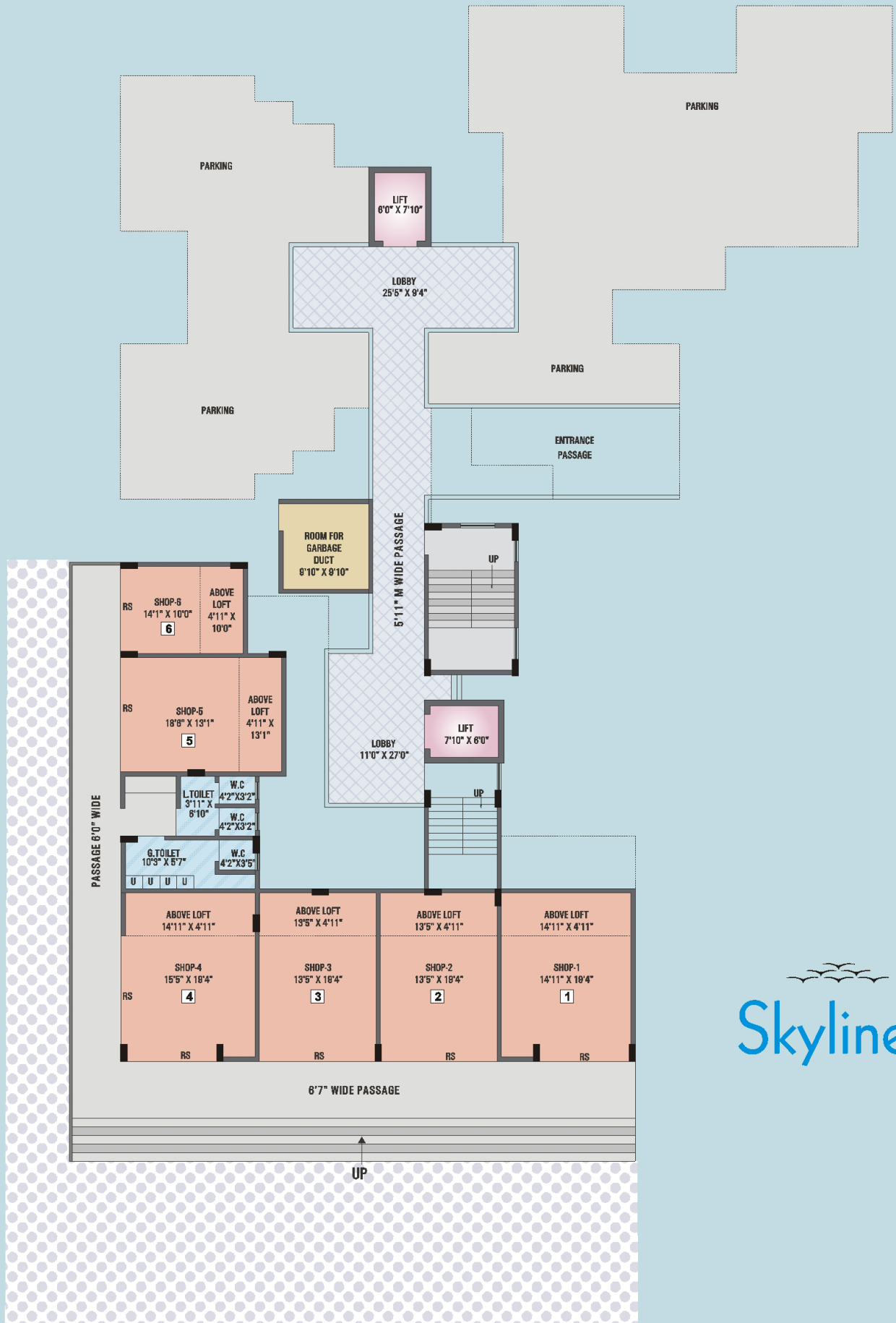
— 1 & 2 BHK Homes —  
**@ CHARHOLI BK.**

Charholi's Most,  
Prominent Homes





« ROAD »



« ROAD »

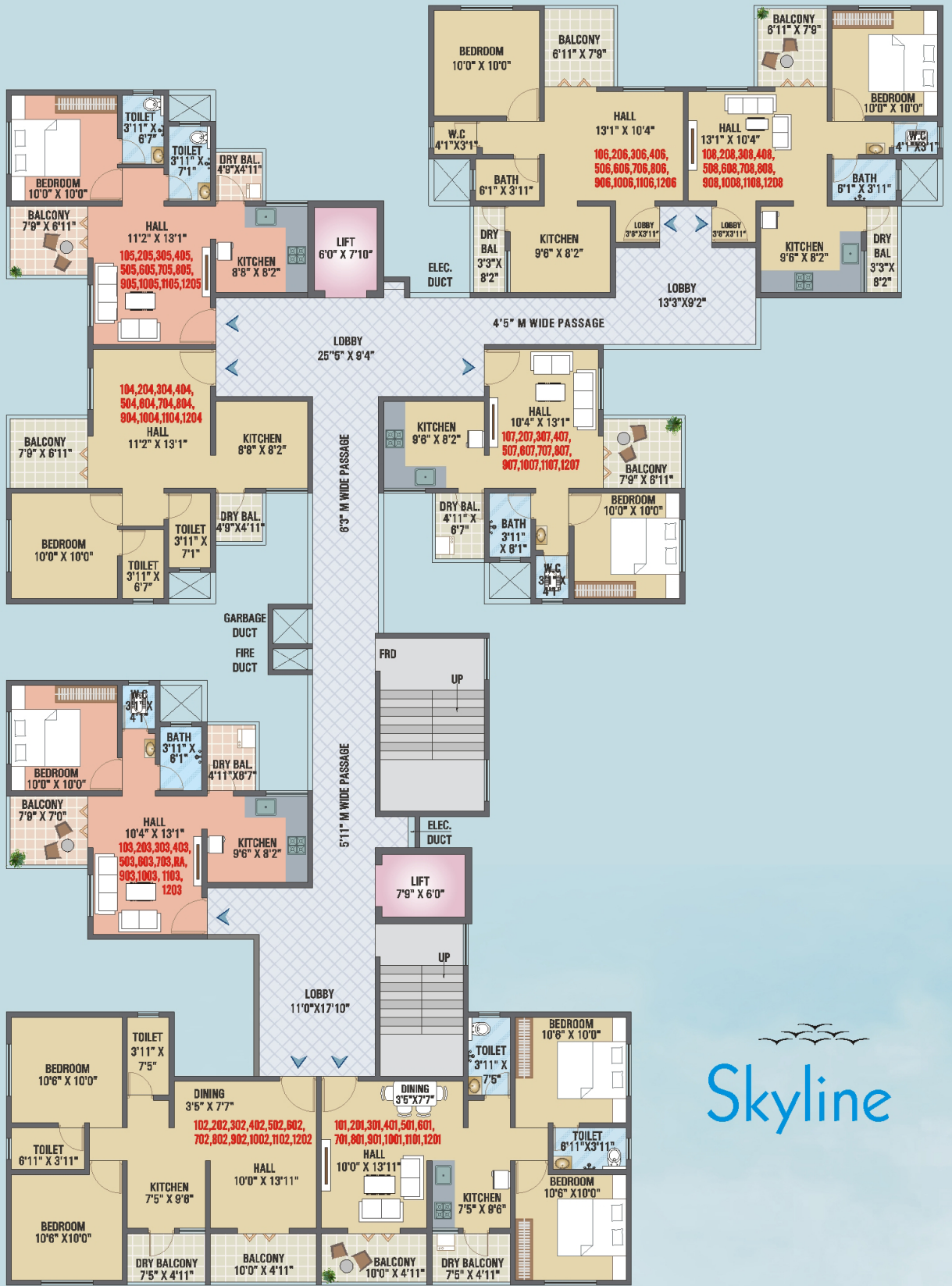
## GROUND FLOOR

AREA STATEMENT IN SQ.FT.

SHOP NO.	CARPET AREA	LOFT AREA	TOTAL CARPET SQ.FT
SHOP-1	286.75	73.41	360.16
SHOP-2	259.73	65.98	325.71
SHOP-3	259.73	65.98	325.71
SHOP-4	293.85	73.41	367.26
SHOP-5	243.05	64.58	307.63
SHOP-6	140.90	49.19	190.09



« ROAD »



« ROAD »

**1ST, 2ND, 3RD, 4TH, 5TH, 6TH, 7TH, 8TH, 9TH,  
10TH, 11TH & 12TH FLOOR**

AREA STATEMENT IN SQ.FT.

FLAT NO.	TYPE	CARPET AREA	BALCONY AREA	TOTAL CARPET SQ.FT
101, 201, 301, 401, 501, 601, 701, 801, 901, 1001, 1101, 1201	2BHK	527.75	85.57	613.32
102, 202, 302, 402, 502, 602, 702, 802, 902, 1002, 1102, 1202	2BHK	527.75	85.57	613.32
103, 203, 303, 403, 503, 603, 703, RA, 903, 1003, 1103, 1203	1BHK	379.64	85.35	464.99
104, 204, 304, 404, 504, 604, 704, 804, 904, 1004, 1104, 1204	1BHK	396.54	76.53	473.07
105, 205, 305, 405, 505, 605, 705, 805, 905, 1005, 1105, 1205	1BHK	396.54	76.53	473.07
106, 206, 306, 406, 506, 606, 706, 806, 906, 1006, 1106, 1206	1BHK	394.17	79.97	474.14
107, 207, 307, 407, 507, 607, 707, 807, 907, 1007, 1107, 1207	1BHK	379.64	85.35	464.99
108, 208, 308, 408, 508, 608, 708, 808, 908, 1008, 1108, 1208	1BHK	394.17	79.97	474.14





# 1 BHK

Well Comfort Flat



# 2 BHK

Well Designed Flat



# AMENITIES

- Attractive Entrance Gate
- Podium Garden
- Solar System
- High quality lift
- Modern elevation
- Water Purifier for all flat
- Tree plantation
- Well plan design flats
- Decorative compound
- Adequate Parking Space
- CCTV Camera for common area
- Bore well
- Individual letter box
- Individual name plate
- Fire fighting system
- Video Door Phone
- Garbage Duct
- Generator Back-up for living Room ( Single Tubelight ), lift & Common Passage



**Skyline**

— 1 & 2 BHK Homes —

# SPECIFICATIONS

## ■ STRUCTURE -

Sound R.C.C. frame structure designed for earthquake resistant

## ■ MASONRY

All walls in brick  
Sand face cement plaster for external wall  
Smooth plaster for internal wall

## ■ ELECTRIFICATION

concealed electrical points with modular switches, telephone & cable point in living and master bedroom. Aqua guard & exhaust fan point in kitchen

## ■ DOORS

Main entrance door & good quality decorative skin with steel fitting & internal commercial flush with steel fitting

## ■ PLUMBING

concealed plumbing with branded fitting, hot & cold mixer and boiler point in bath commode in 's' or 'p' trap in toilet and orrisa pan for w.c.

## ■ FLOORING

2'x2' vitrified tile flooring for the entire flat & antiskid ceramic tile for bath, toilet & terrace  
colored glazed tiles upto lintel level in bath, toilet, m. toilet, plain white glazed tiles upto sill level in w.c.

## ■ WINDOWS

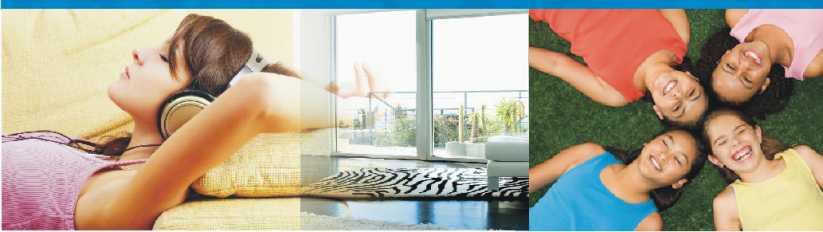
powder coated 3track aluminum sliding windows with float glass

## ■ KITCHEN

machine polish granite kitchen platform having size approx 8'x2'3" with isi mark s.s. sink, kitchen platform dado tiles upto window top above platform

## ■ PAINTING

External decorative cement paint & internal good quality washable oil bond distemper



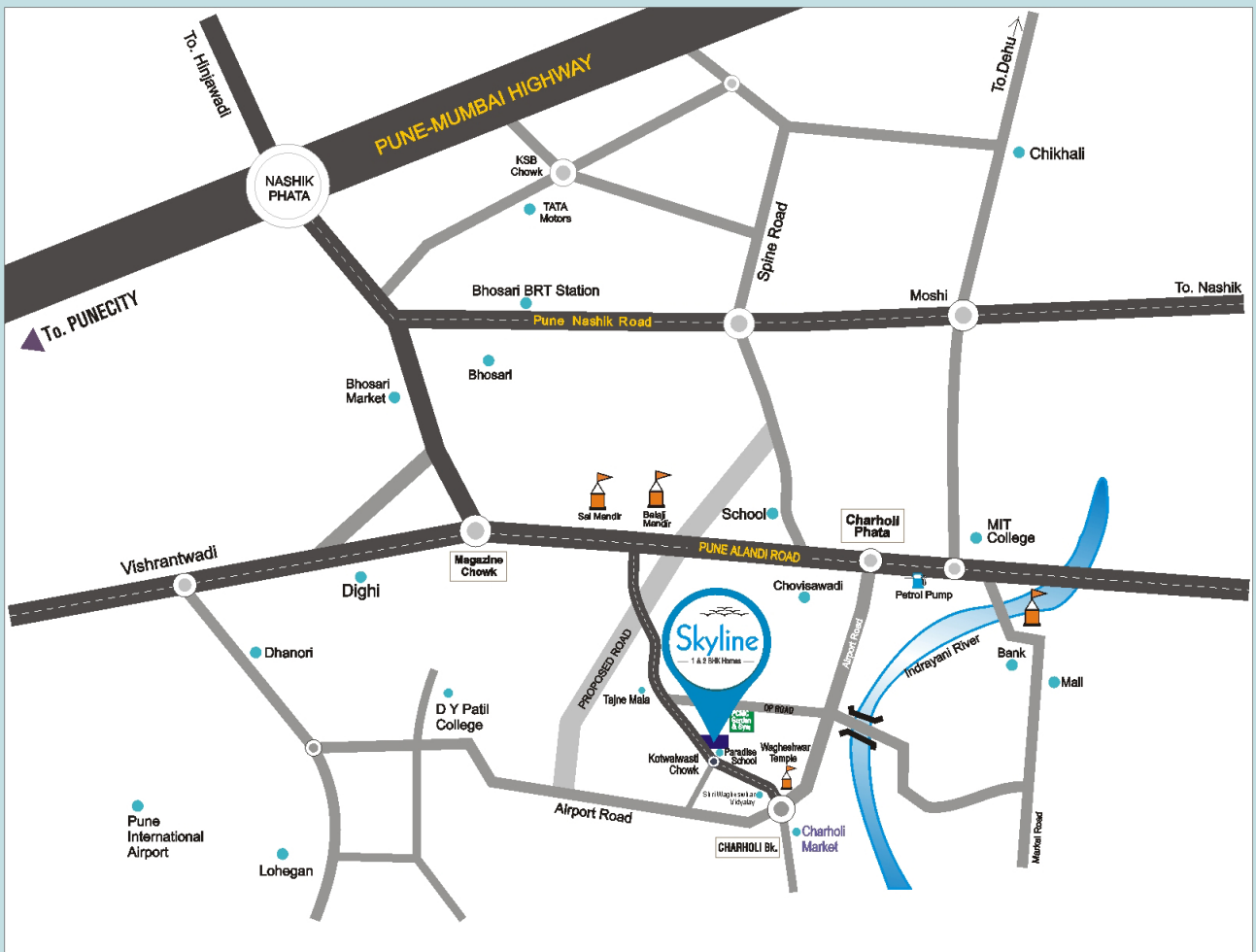


## CONNECTIVITY

- Market Place : 2min
- Hospital : 10min
- School : 4min
- MIT College : 10min
- Petrol Pump : 07min
- Sharad Pawar Int. School : 10min
- Bhosari MIDC : 10min
- Hinjawadi IT Park : 40min
- Chakan MIDC : 35min
- Pune City : 20min
- Airport : 15min



## Location Map (Not to Scale)



A Project by



Site Address : Charholi BK, Sr. No. 413/1/1, Airport Road, Kotwalwasti, Tal Haveli, Pune-412105.

**CONTACT NO - 7709139909 / 9960259909**

Architect - Techno Arch Consultancy (Pravin Patil) | RCC - Techno Arch Designer (Poonam Patil)

Disclaimer: This brochure is purely conceptual and not a legal offering. The developer reserves all the rights to add, delete, alter any detail, specification, elevation mentioned herein. The brochure is indicative of how the furniture could be arranged in a residential unit. No furniture is to be supplied to the purchaser by the developer unless otherwise mentioned. All images, unless otherwise indicated, are used for illustrative purpose only.