

More to **LIVE,** *Play.*  
more to



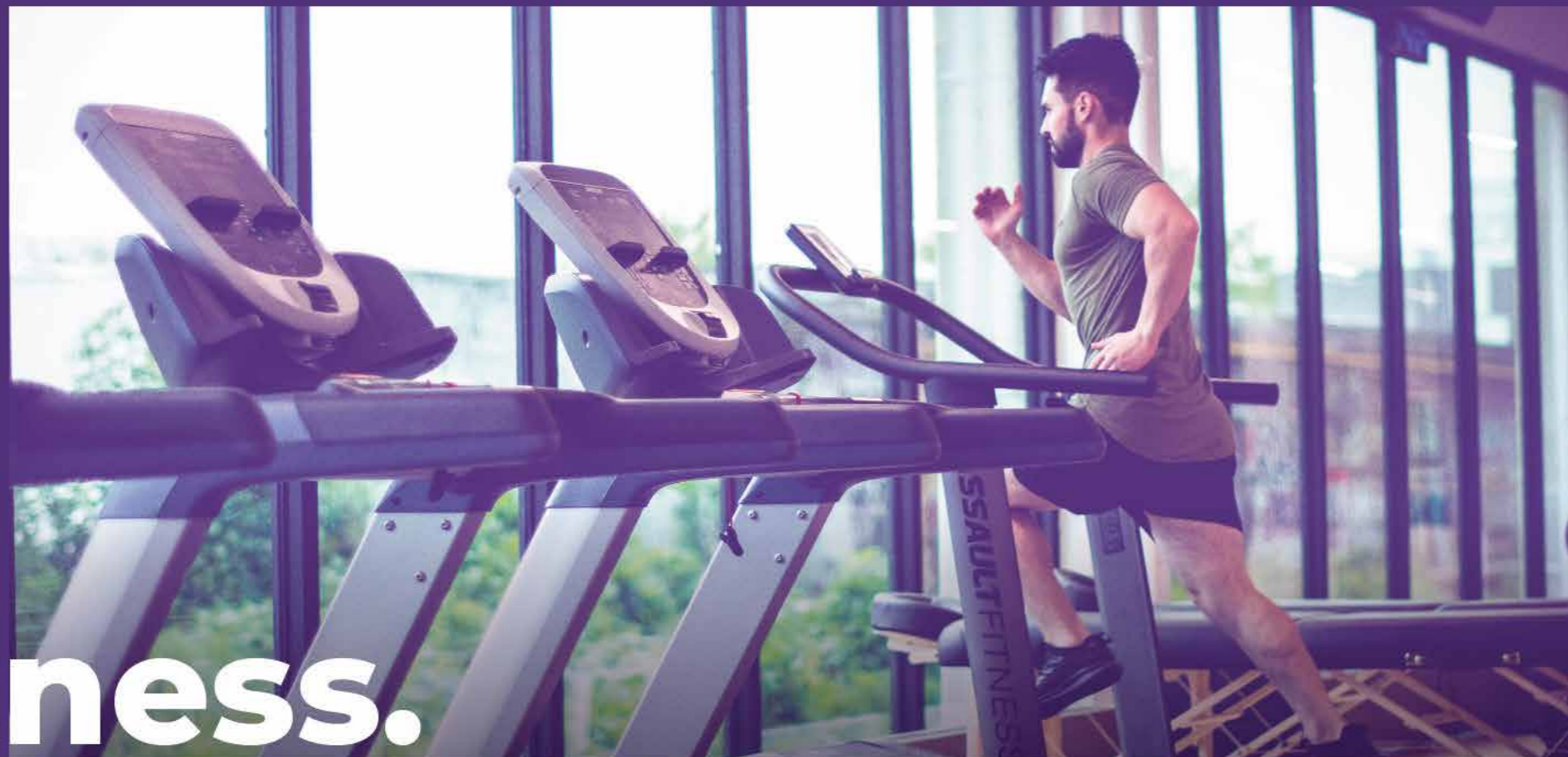
Images used are for representation purposes only

# Discover a world of possibilities with **MORE.**

Welcome to Golden Fortune. A place where you can savour the joys of more with the ultra-spacious 2BHK apartments alongside a playground. Currently, it houses 200+ happy families in two wings. And the construction work for the third wing has already started. We invite you to join the present Golden Fortune families in carefree living with a place to play and a bouquet of lifestyle amenities.

Come, discover a life of more.

GYM



More **Fitness.**

More

*Convenience.*

Realize your fitness goals with a state-of-the-art gymnasium in the complex.

More **Gatherings.**

Play the perfect host with a spacious and well-maintained Banquet Hall in your complex itself.

More *Fun.*



BANQUET HALL

CHILDREN'S  
PLAY AREA



More  
**Games.**

More  
*Memories.*

Cut down on screen-time and give your kids a perfect childhood with a Children's Play Area.

More  
**Beauty.**

Rejuvenate and recharge,  
soaking in the beauty of  
our Landscaped Garden.

More  
*Serenity.*



LANDSCAPED  
GARDEN

JOGGING  
TRACK



More  
**Running.**

More  
*Energy.*

Clear your mind with a refreshing run on a fully functional jogging track.

More  
**Connections.**

Enjoy the experience of community living with a Clubhouse.

More  
*Happiness.*



CLUBHOUSE



EAST SIDE ELEVATION.



Images used are for representation purposes only

CLUB HOUSE



Images used are for representation purposes only



# Amenities

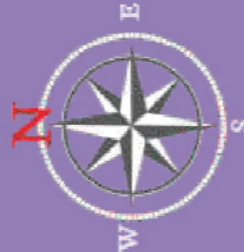
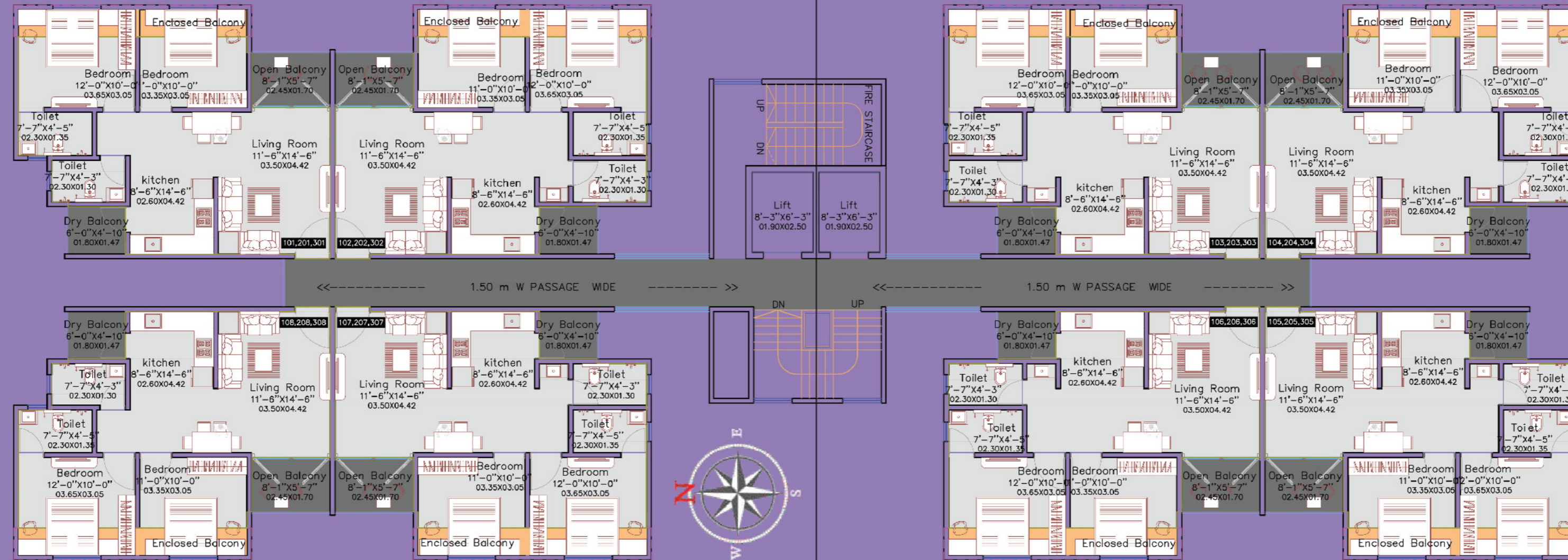
- |                         |                          |
|-------------------------|--------------------------|
| A. PCMC playground      | E. Yoga/ Meditation area |
| B. Children's play area | F. Gymnasium             |
| C. Senior citizen area  | G. Party lawn            |
| D. Temple               | H. Banquet hall          |

# Others

- ◆ Generator back up for common area & elevators
- ◆ 24/7 security
- ◆ Automated elevators
- ◆ Rain water harvesting

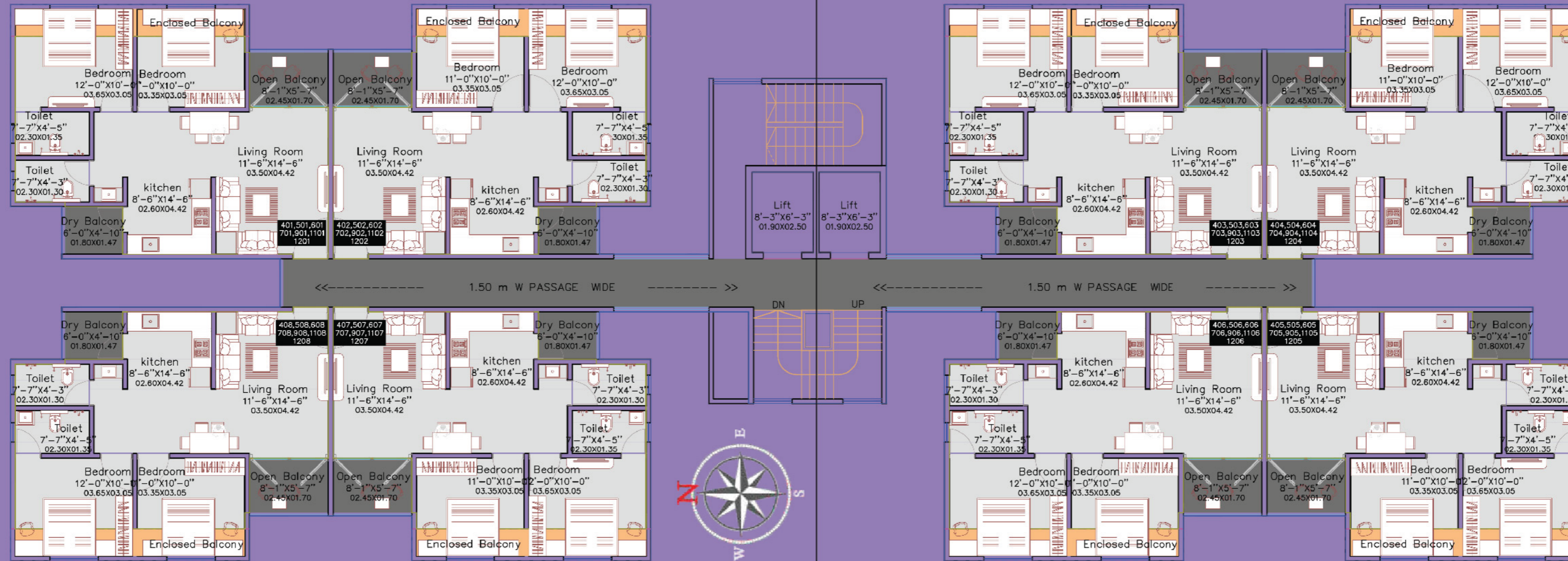


# 1st, 2nd, 3rd Floor Plans



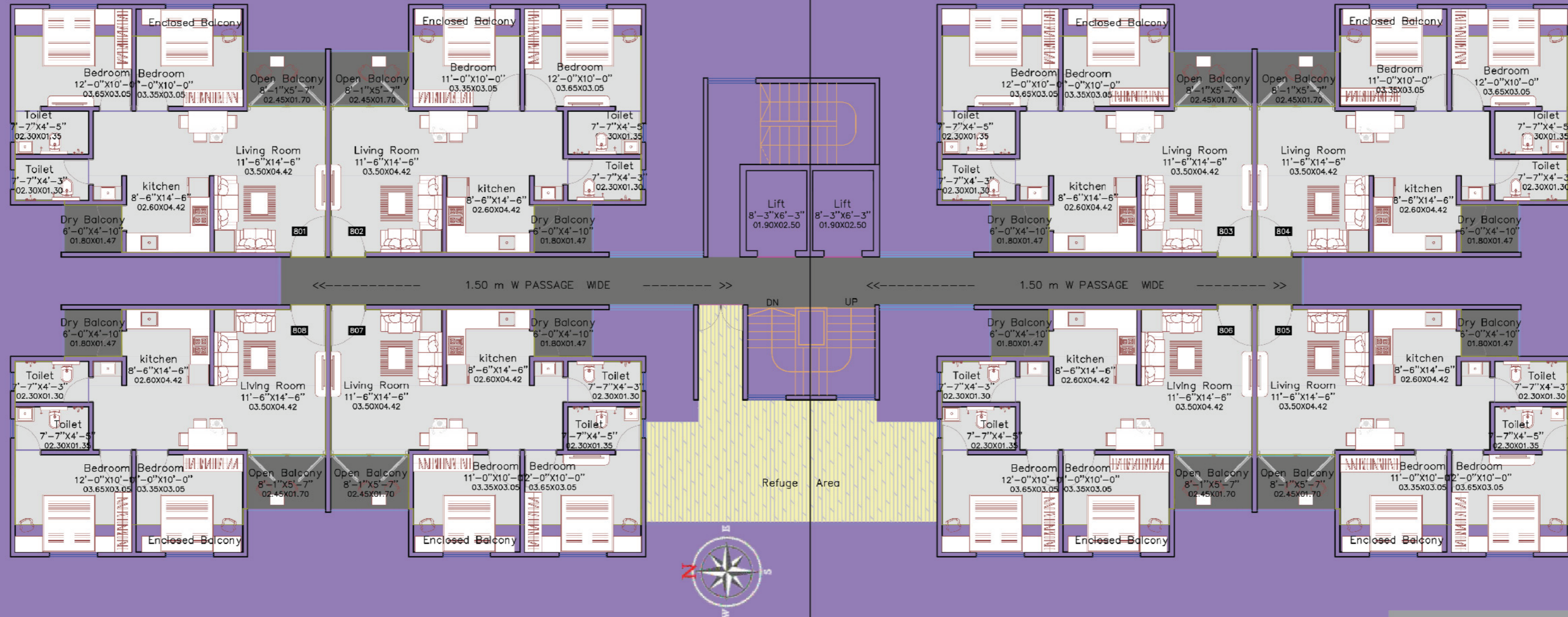
Flat Series	Type	Rera Carpet	Encl. Balcony	Open Balcony	Total
	Sq.M.	Sq.M.	Sq.M.	Sq.M.	Sq.M. Sq.Ft.
01, 08	2BHK	54.04	6.08	6.81	66.93 720
02, 03, 04, 05, 06, 07	2BHK	55.56	6.08	6.81	68.45 737

# 4th, 5th, 6th, 7th, 9th, 10th, 11th, 12th Floor Plans



Flat Series	Type	Rera Carpet	Encl. Balcony	Open Balcony	Total
	Sq.M.	Sq.M.	Sq.M.	Sq.M.	Sq.M. Sq.Ft.
01, 02, 03, 04, 05, 06, 07, 08	2BHK	55.56	6.08	6.81	68.45 737

# 8th Floor Plan



Flat Series	Type	Rera Carpet	Encl. Balcony	Open Balcony	Total
	Sq.M.	Sq.M.	Sq.M.	Sq.M.	Sq.M. Sq.Ft.
01, 02, 03, 04, 05, 06, 07, 08	2BHK	55.56	6.08	6.81	68.45 737

# Specifications



## MASONRY

- ◆ External 6" brickwork
- ◆ Internal 6"/5" brickwork



## FLOORING

- ◆ Vitrified tiles in living/ dining area, kitchen, passage and guest/children's bedroom
- ◆ Designer antiskid tiles in toilets
- ◆ Wooden finish tiles in balconies



## DOORS/WINDOWS RAILINGS

- ◆ Decorative main door with designer name plate
- ◆ a Quba/Europa or equivalent make door lock system
- ◆ Flush doors for bedrooms, bathrooms and dry balcony
- ◆ Granite door frames for bathrooms & dry balcony
- ◆ 3 track powder coated with aluminium window for with mosquito net balcony doors and windows
- ◆ Granite sills for windows
- ◆ Ms safety grills for windows
- ◆ Ms railing in balconies



## PLASTER

- ◆ Sand faced cement plaster for external walls
- ◆ Gypsum/POP finish for internal walls in all apartments



## KITCHEN

- ◆ Granite platform & stainless steel sink
- ◆ Designer glazed dado tiles up to lintel level
- ◆ Separate drinking & utility water taps



## PAINT

- ◆ Internal: Acrylic emulsion paint with supreme quality wall finish
- ◆ External: Weather proof superior quality exterior paint



## ELECTRIFICATION

- ◆ Concealed wiring with circuit breakers
- ◆ AC point in master bedroom
- ◆ TV point in living room
- ◆ Modular switches from Legrand/Havells or equivalent



## BATHROOMS

- ◆ Bathroom fittings from Hindware/ Asian/ Jaguar or equivalent make
- ◆ Sanitary ware from Hindware/ Asian /Jaguar or equivalent make
- ◆ Designer glazed dado tiles on the walls up to Lintel level
- ◆ Solar water heating system in master bathroom
- ◆ Wall hung premium EWCs in all bathroom
- ◆ Provision for exhaust fan in all bathrooms
- ◆ Concealed plumbing work
- ◆ Health faucet in toilets
- ◆ Hot and cold diverter unit in all bathrooms



## DRY BALCONY

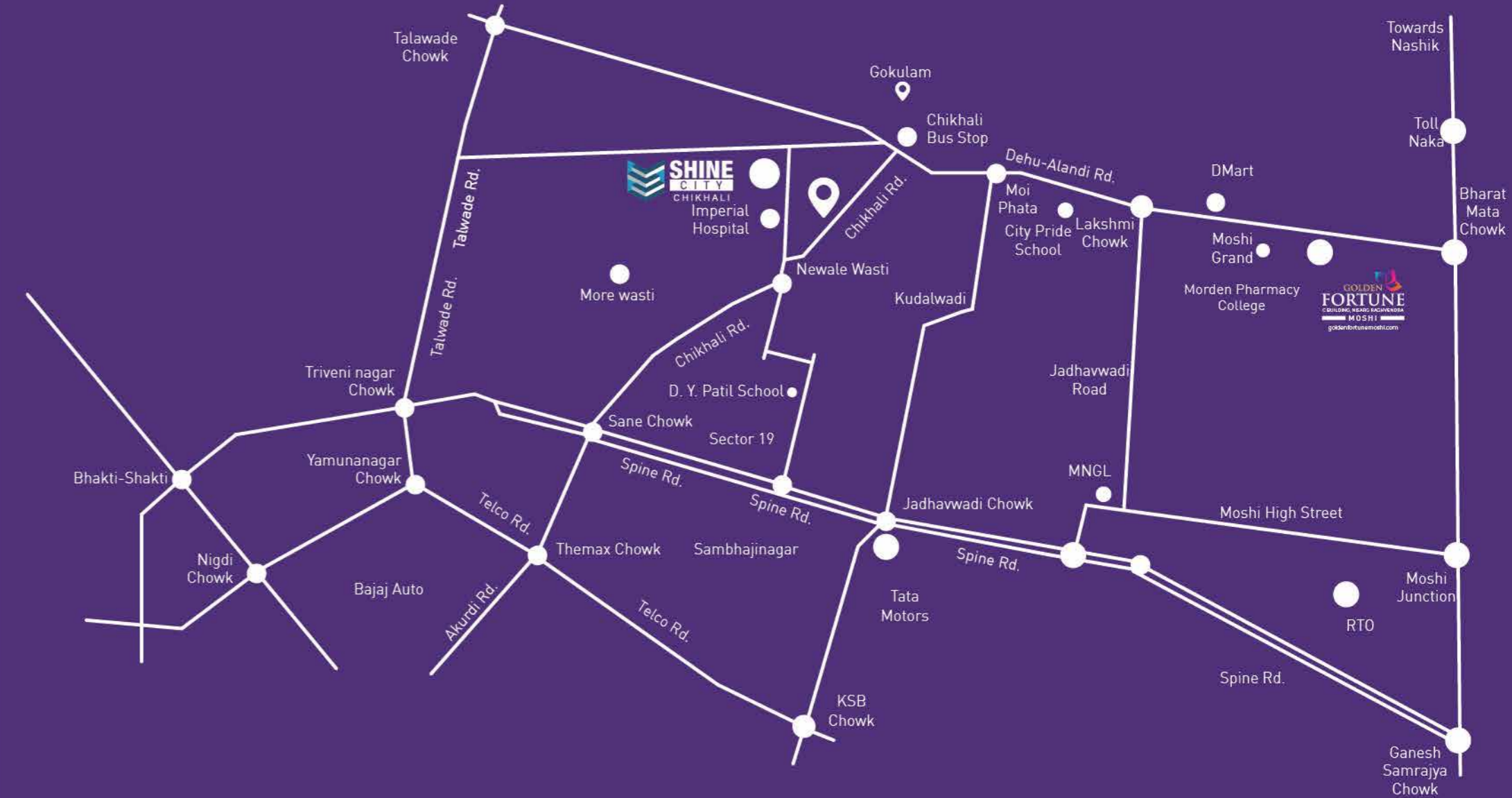
- ◆ Plumbing and electric point for washing machine
- ◆ Proper water inlet and outlet points



## ESSENTIAL FACILITIES

- ◆ Provision for Wi-Fi internet router in each apartment
- ◆ Provision For DTH-TV connection in each apartment
- ◆ Video door phone with Doorbell
- ◆ Intercom/ Migate or equivalent facility
- ◆ DRY BALCONY
- ◆ Plumbing and electric point for washing machine
- ◆ Proper water inlet and outlet points

# Location



**Architect:** Dream Space Architects    **RCC consultant:** Ajay Bhilare & Associates

**MEP consultant:** Skyline MEP Consultants    **Branding consultant:** 3 Brothers & FILs (3BF)

 **9513166763**  
[www.goldenfortunemoshi.com](http://www.goldenfortunemoshi.com)

PROJECT BY:



IN ASSOCIATION WITH:



**Site:**

Gat No.179, Borhadewadi, Moshi-Dehu Road, Moshi,  
Near Modern Pharmacy College, Pune, Maharashtra 412105

**Corporate:**

B-313, G. O. Square, Near Mankar Chowk, Wakad, Pune-411057

---

Disclaimer : This brochure is purely conceptual and not a legal offering nor will it be part of the agreement. Nothing contained in this brochure will take precedence in the final agreement. Number of buildings, areas, amenities, specifications, floors, number of the flats / units may be revised. Promoters reserve the rights to amend the layout, plans, designs, specifications, amenities, etc. without prior notice.

---