



LUXURY  
SQUARE

# #HappinessIsHomemade

Happiness is not something you should look for outside, it's something you find within and that's the idea we have built on. We have designed a home and a lifestyle, that's going to give you a true sense of belonging and joy. It's the kind of home where you feel, sense and experience bliss in every nook and corner of its vibe.

Luxury Square is a masterpiece defined by exceptional amenities and exquisite beauty. The project comprises 2 and 3 BHK thoughtfully designed homes that come with pleasing amenities, alluring opportunities, and gorgeous backdrops of nature. It is an ultra-fancy space designed to give you all Premium amenities, easy connectivity, and a tranquil environment all under one roof.



LUXURIOUS 2 & 3 BHK HOMES  
MOSHI PRIME



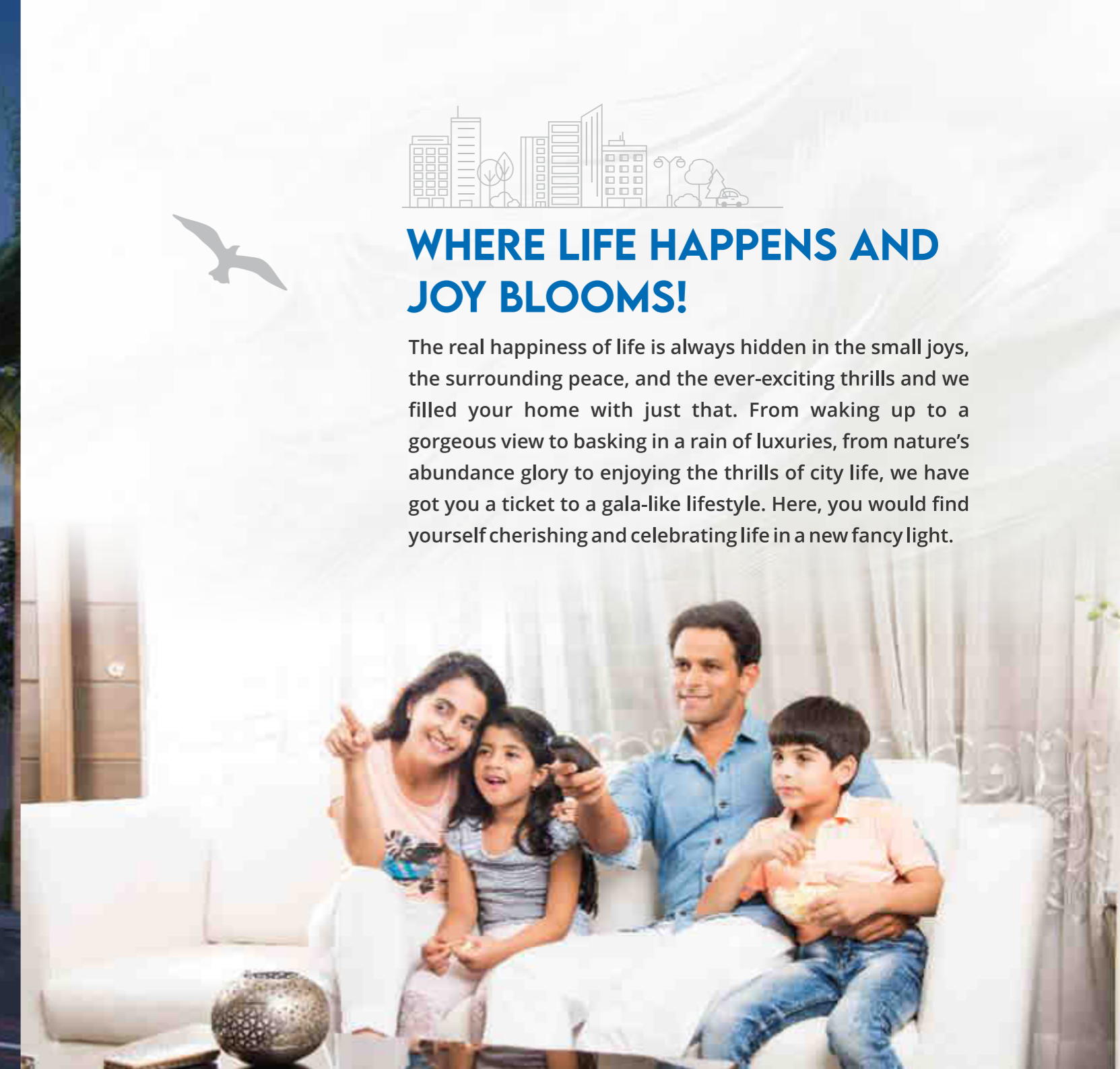


ARTIST'S IMPRESSION



## WHERE LIFE HAPPENS AND JOY BLOOMS!

The real happiness of life is always hidden in the small joys, the surrounding peace, and the ever-exciting thrills and we filled your home with just that. From waking up to a gorgeous view to basking in a rain of luxuries, from nature's abundance glory to enjoying the thrills of city life, we have got you a ticket to a gala-like lifestyle. Here, you would find yourself cherishing and celebrating life in a new fancy light.





## PROJECT HIGHLIGHTS

- BIGGEST CARPET in the vicinity
- Zero Space Wastage
- Life time open ventilation
- 10+ Thoughtful Amenities
- 5 Top Educational Institutions within 2 km
- 3- side open apartment with excellent cross ventilation and ample sunlight
- Semi furnished flats
- All Corner Flats
- Every Two flats having separate individual lobby.
- Vastu Compliant
- Best Connectivity
- PRIME LOCATION - Off. Spine Road





IMAGE FOR REPRESENTATIVE PURPOSE ONLY



## **A LIFESTYLE NOTHING LESS THAN A VACATION!**

Your search for quintessential luxury and exceptional lifestyle experiences ends here. Welcome to Luxury Square- A premium residential property designed for a selected few who wish to live a lifestyle that moves, excites, and amazes them to the core. The moment you step into this grandeur you elevate your lifestyle to a level that is beyond the ordinary.



ARTIST'S IMPRESSION



## BEST OF BOTH THE WORLDS!

The best things in life aren't always easily accessible and available but we defied this rule and built you a world that has got the best of everything. It's very close to nature yet even closer to every aspect of the Urbane City life that you asked for. It's a home connected to the heart of the city from all four sides and yet is a gateway to a tranquil, peaceful, and abundant lifestyle. It's a whole new world full of grace, elegance, and undisturbed leisure that's just worth every penny spent.

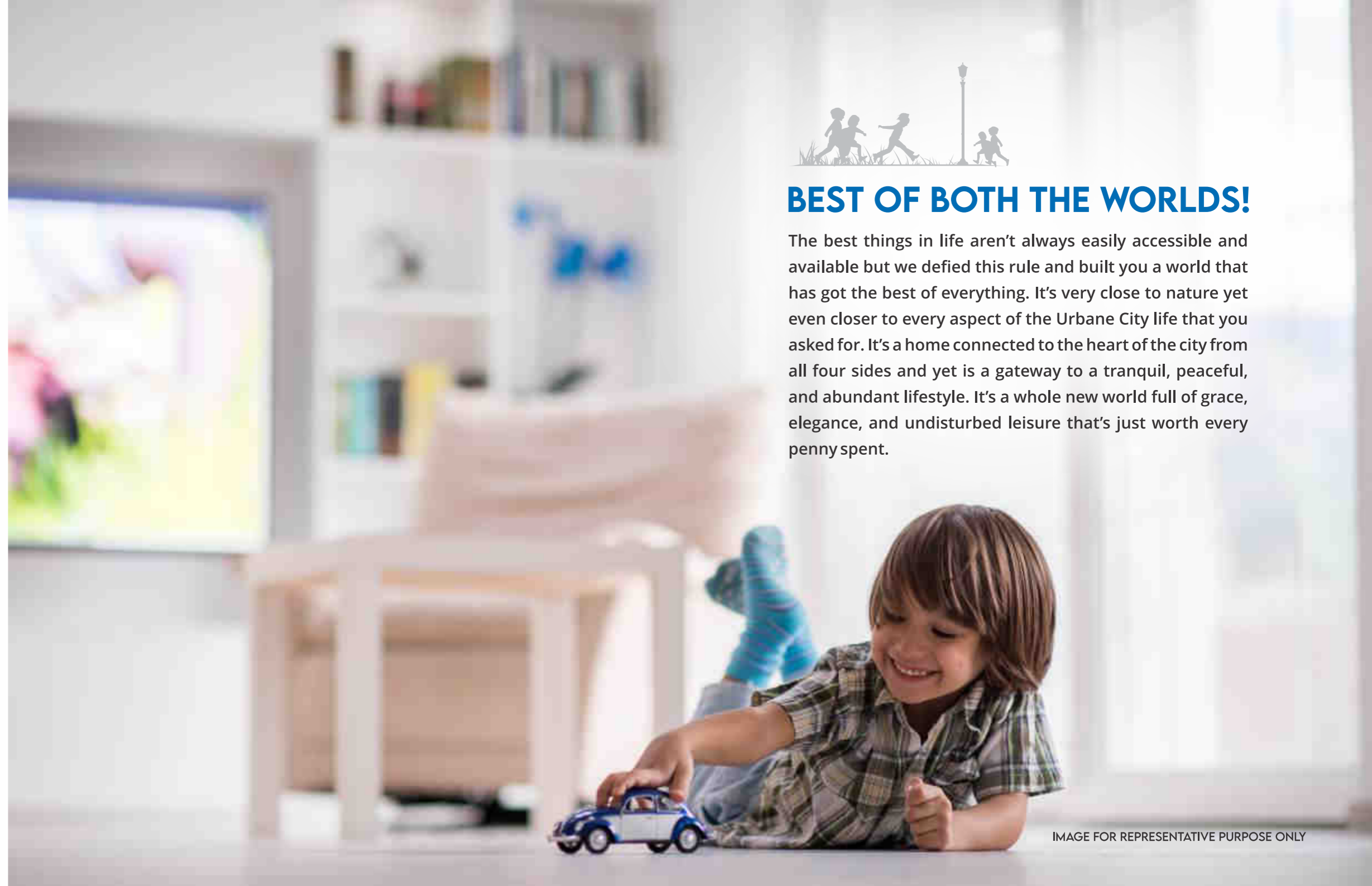


IMAGE FOR REPRESENTATIVE PURPOSE ONLY



IMAGE FOR REPRESENTATIVE PURPOSE ONLY



## **AT THE HEART OF EVERYTHING!**

Positioned in a thriving neighborhood, the property is easily connected to all the vital destinations of Pune. It promises a lifestyle of convenience and opportunities with proximity to all the nearby educational and commercial hubs. Its Strategic location brings you closer to all things great and fancy offering you a bright, promising, and enriched today and tomorrow.





## A LIFETIME MIGHT JUST BE ENOUGH TO ENJOY IT!

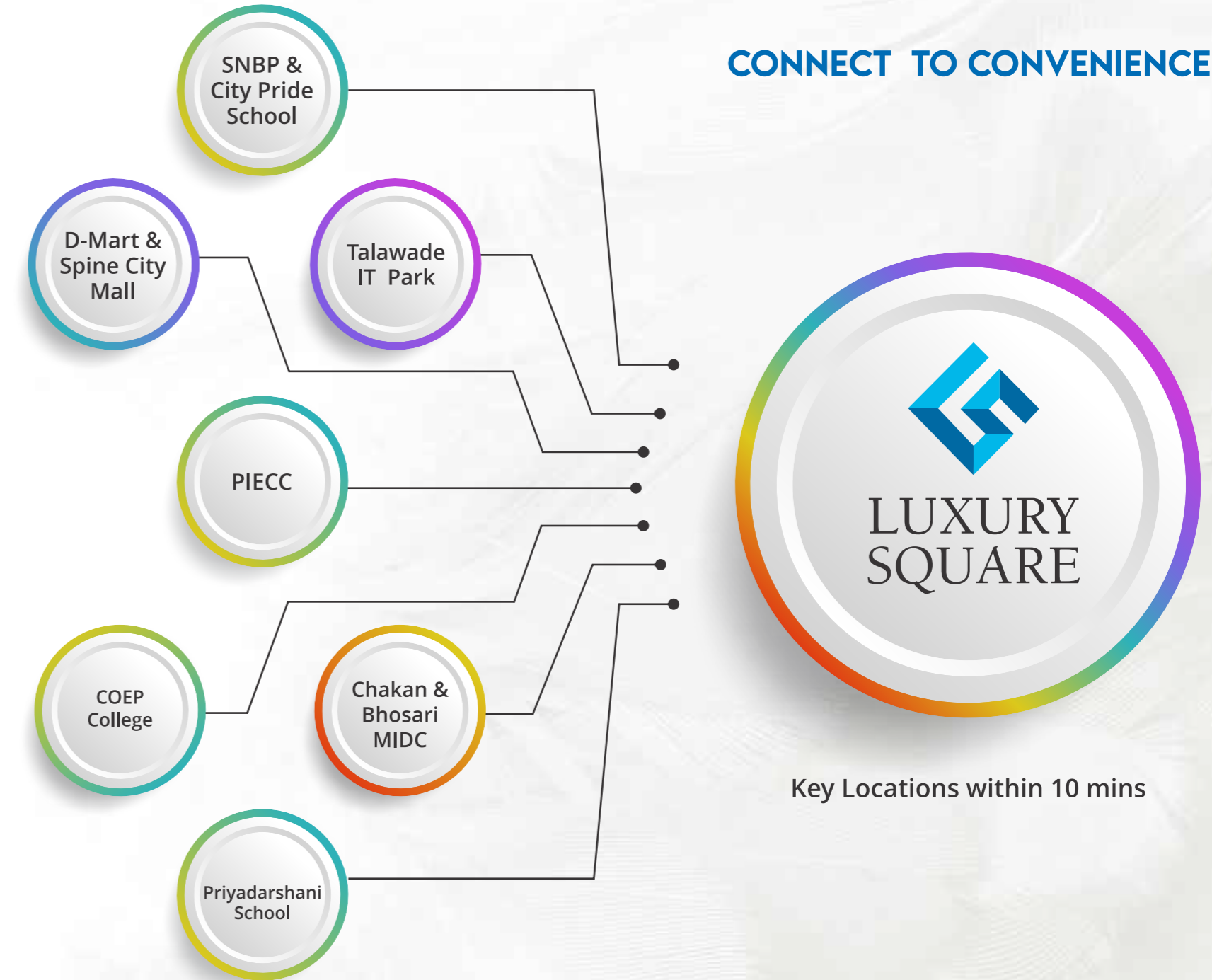
This Ultra-luxurious lifestyle is packed and jammed with the finest bunch of amenities to give you the fanciest resort-like experience at home. It has all the extravagances of life to pamper, spoil, and coddle you and your family. From gymnasiums to lush green parks, everything you need is right here. It is one of those classic urban homes that's infused with the charm of nature to turn your life into a symphony of joy and happiness.





ARTIST'S IMPRESSION

## CONNECT TO CONVENIENCE



# IMPRESSIVE AMENITIES



Children's Play Area



Party Lawn



Open Terrace Garden



Multi Purpose Hall



Seating Area



Bus / Cab Pick Up Point



Senior Citizen Area & Sit-outs



Sculpture Pedestal



Jogging Track



Security Cabin



Exercise Station



Society Office





## FLAT AMENITIES



Video Door Camera



Safety Door with Safety Grill



Tubelights in all Rooms



Celling Fans in all Rooms



Kitchen Trolley



Water Purifier in Kitchen



Water Heater in all Bathrooms

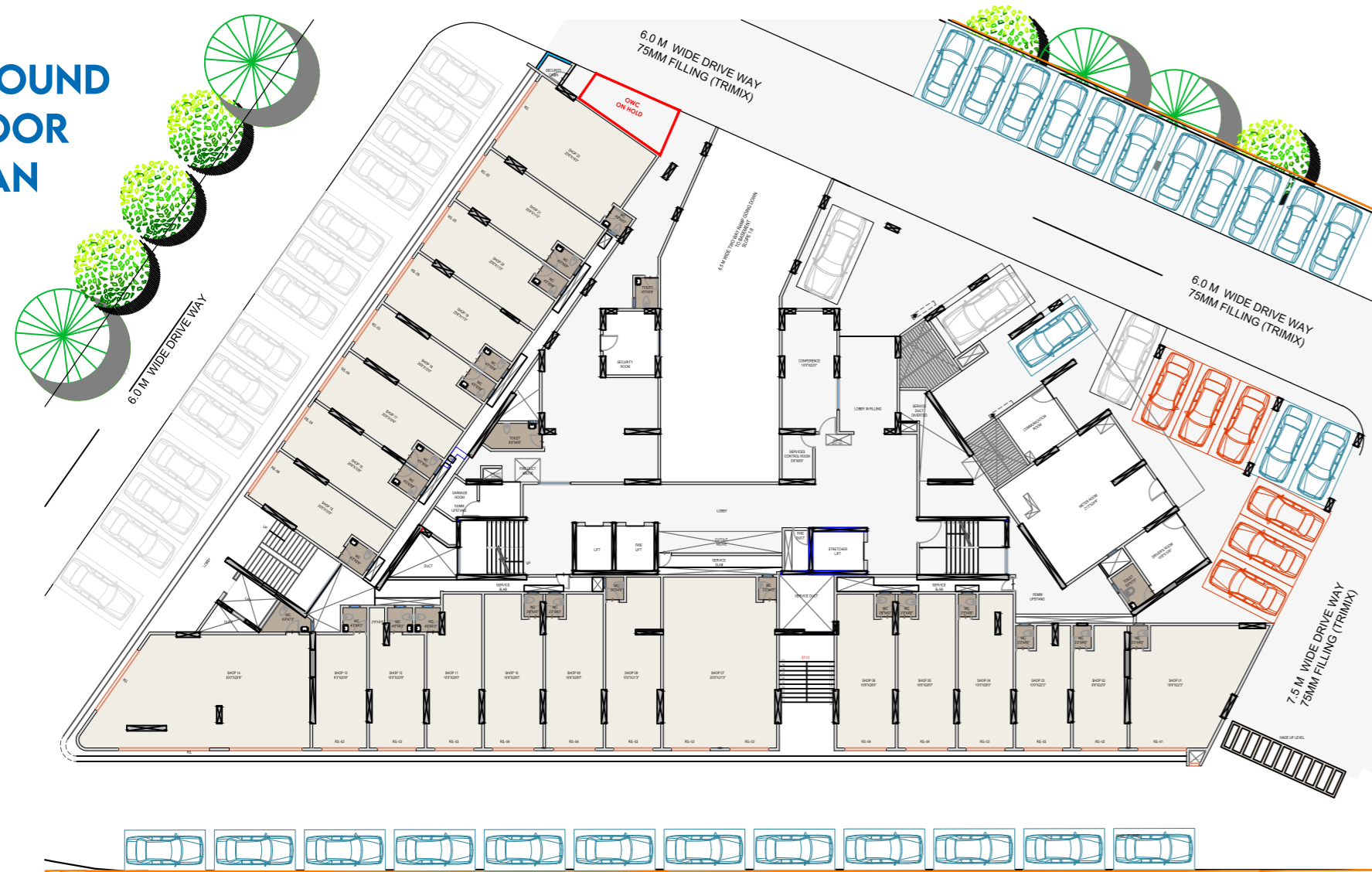


## SPECIFICATIONS

- 1. STRUCTURE**
  - Earthquake - Resistant RCC Frame Structure
  - AAC Block Work Walls of 125mm And 150mm
- 2. FLOORING**
  - Vitrified Tiles In Rest Of The Apartment
  - Dado Tiles For Bathrooms And Kitchen
  - Anti -Skid Tiles For Bathrooms And Terraces
- 3. DOORS**
  - Laminated Doors And Door Frames For All Doors
  - Laminated Safety Door With Safety Grill
- 4. KITCHEN**
  - L- Shape Black Granite Kitchen Platform
  - Stainless Steel Sink
  - Dado Tiles UP to 2'0" Height On Kitchen Platform
  - Provision For Water Purifier
  - Provision for Piped Gas
- 5. WINDOWS**
  - Full Granite Window Frames
  - Premium Aluminium - Powder Coated Sliding Windows With Mosquito Net
  - Powder Coated French Door For Terrace
- 6. ELECTRIFICATION**
  - Concealed Electrical Piping
  - Renowned Modular Switches
  - Standard ISI Multi-Strand Wires With MCB & ELCB
  - Provision For 3BHK - 4 AC Points
  - Provision For 2BHK - 2 AC Points
  - TV Points In Living & Master Bed Room
  - Provision for Inverter In Each Apartment
- 7. BATHROOMS/ TOILETS**
  - Concealed Plumbing
  - Single Lever Diverter
  - Health Faucet
  - Bathroom Wall Tiles Up To 7 ft Height
  - Granite & Laminated Door Frames
  - Sanitary Fittings
- 8. WALL FINISH /PAINT**
  - POP/Gypsum Wall Finish
  - OBD Paint For Interiors
  - Acrylic Emulsion Paint For Exteriors
- 9. SECURITY**
  - Video Door Phone For Each Apartment
  - CCTV Cameras For Selected Areas
  - Security Cabin
- 10. LIFT**
  - No Of Lifts : 3
  - 2 High Speed Lifts & 1 Stretched Lift With Auto Rescue Device
- 11. UTILITIES**
  - Sewage Treatment Plant
  - Organic Waste Converter
  - Rainwater Harvesting
  - Water Recycling For Garden And Flushing
  - Generator Backup For Common Passages & Utilities
  - Underground And Overhead Tanks For Water Storage
  - Firefighting System
  - Tremix Concrete Roads



# GROUND FLOOR PLAN



GROUND + MEZZANINE AREA CALCULATIONS			
SHOP NO.	CARPET AREA (SQ.FT.)	MEZZANINE AREA (SQ.FT.)	TOTAL CARPET AREA(SQ.FT.)
SHOP-01	447	247	694
SHOP-02	223	107	329
SHOP-03	227	108	335
SHOP-04	284	166	450
SHOP-05	298	174	472
SHOP-06	303	177	479
SHOP-07	651	312	963
SHOP-08	315	151	466

GROUND + MEZZANINE AREA CALCULATIONS			
SHOP NO.	CARPET AREA (SQ.FT.)	MEZZANINE AREA (SQ.FT.)	TOTAL CARPET AREA(SQ.FT.)
SHOP-09	298	141	439
SHOP-10	303	145	446
SHOP-11	286	114	400
SHOP-12	249	135	384
SHOP-13	228	140	368
SHOP-14	811	359	1169
SHOP-15	259	112	381
SHOP-16	273	129	402

GROUND + MEZZANINE AREA CALCULATIONS			
SHOP NO.	CARPET AREA (SQ.FT.)	MEZZANINE AREA (SQ.FT.)	TOTAL CARPET AREA(SQ.FT.)
SHOP-17	273	129	402
SHOP-18	258	122	380
SHOP-19	283	134	418
SHOP-20	283	134	418
SHOP-21	283	134	418
SHOP-22	423	207	630

# FIRST FLOOR PLAN



FIRST FLOOR			
SHOP NO.	CARPET AREA (SQ.FT.)	MEZZANINE AREA (SQ.FT.)	TOTAL CARPET AREA(SQ.FT.)
SHOP-01	393	0	393
SHOP-02	184	0	184
SHOP-03	191	0	191
SHOP-04	248	0	248
SHOP-05	260	0	260
SHOP-06	260	0	260
SHOP-07	577	0	577
SHOP-08	279	0	279

FIRST FLOOR			
SHOP NO.	CARPET AREA (SQ.FT.)	MEZZANINE AREA (SQ.FT.)	TOTAL CARPET AREA(SQ.FT.)
SHOP-09	260	0	260
SHOP-10	264	0	264
SHOP-11	250	0	250
SHOP-12	213	0	213
SHOP-13	190	0	190
SHOP-14	575	0	575
SHOP-15	220	0	220
SHOP-16	230	0	230

FIRST FLOOR			
SHOP NO.	CARPET AREA (SQ.FT.)	MEZZANINE AREA (SQ.FT.)	TOTAL CARPET AREA(SQ.FT.)
SHOP-17	230	0	230
SHOP-18	219	0	219
SHOP-19	241	0	241
SHOP-20	241	0	241
SHOP-21	241	0	241
SHOP-22	355	0	355

# REFUGE FLOOR PLAN 7<sup>TH</sup> & 12<sup>TH</sup>



2ND FLOOR					
UNIT TYPE	FLAT NO.	CARPET AREA (SQ.FT)	BALCONY AREA (SQ.FT)	GARDEN TERR. AREA (SQ.FT)	TOTAL AREA (SQ.FT)
2 BHK - A	701,1201	681	145	0	<b>826 SQ.FT.</b>
2 BHK - A	702,1202	681	145	0	<b>826 SQ.FT.</b>
2 BHK - B	703,1203	718	140	0	<b>858 SQ.FT.</b>
2 BHK - B	704,1204	718	140	0	<b>858 SQ.FT.</b>
2 BHK - A	705,1205	681	145	0	<b>826 SQ.FT.</b>

2ND FLOOR					
UNIT TYPE	FLAT NO.	CARPET AREA (SQ.FT)	BALCONY AREA (SQ.FT)	GARDEN TERR. AREA (SQ.FT)	TOTAL AREA (SQ.FT)
2 BHK - A	706,1206	681	145	0	<b>826 SQ.FT.</b>
3 BHK - A	707,1207	922	150	0	<b>1071 SQ.FT.</b>
2 BHK - D REFUGE AREA	708,1208	0	0	0	<b>0 SQ.FT.</b>
2 BHK - D	709,1209	744	115	0	<b>859 SQ.FT.</b>
3 BHK - A	710,1210	922	150	0	<b>1071 SQ.FT.</b>

# TYPICAL FLOOR PLAN 3<sup>TH</sup>, 4<sup>TH</sup>, 5<sup>TH</sup>, 6<sup>TH</sup>, 8<sup>TH</sup>, 9<sup>TH</sup>, 10<sup>TH</sup>, 11<sup>TH</sup>, 13<sup>TH</sup> & 14<sup>TH</sup> FLOOR



3RD,4TH,5TH,6TH,8TH,9TH,10TH,11TH,13TH & 14TH FLOOR					
UNIT TYPE	FLAT NO.	CARPET AREA (SQ.FT)	BALCONY AREA (SQ.FT)	GARDEN TERR. AREA (SQ.FT)	TOTAL AREA (SQ.FT)
2 BHK - A	301,401,501,601,801,901,1001,1101,1301,1401	681	145	0	<b>826 SQ.FT.</b>
2 BHK - A	302,402,502,602,802,902,1002,1102,1302,1402	681	145	0	<b>826 SQ.FT.</b>
2 BHK - B	303,403,503,603,803,903,1003,1103,1303,1403	718	140	0	<b>858 SQ.FT.</b>
2 BHK - B	304,404,504,604,804,904,1004,1104,1304,1404	718	140	0	<b>858 SQ.FT.</b>
2 BHK - A	305,405,505,605,805,905,1005,1105,1305,1405	681	145	0	<b>826 SQ.FT.</b>

3RD,4TH,5TH,6TH,8TH,9TH,10TH,11TH,13TH & 14TH FLOOR					
UNIT TYPE	FLAT NO.	CARPET AREA (SQ.FT)	BALCONY AREA (SQ.FT)	GARDEN TERR. AREA (SQ.FT)	TOTAL AREA (SQ.FT)
2 BHK - A	306,406,506,606,806,906,1006,1106,1306,1406	681	145	0	<b>826 SQ.FT.</b>
3 BHK - A	307,407,507,607,807,907,1007,1107,1307,1407	922	150	0	<b>1071 SQ.FT.</b>
2 BHK - D	308,408,508,608,808,908,1008,1108,1308,1408	744	115	0	<b>859 SQ.FT.</b>
2 BHK - D	309,409,509,609,809,909,1009,1109,1309,1409	744	115	0	<b>859 SQ.FT.</b>
3 BHK - A	310,410,510,610,810,910,1010,1110,1310,1410	922	150	0	<b>1071 SQ.FT.</b>

**CUT SECTION**



**2 BHK**

**CUT SECTION**



**3 BHK**



# CONNECTIVITY

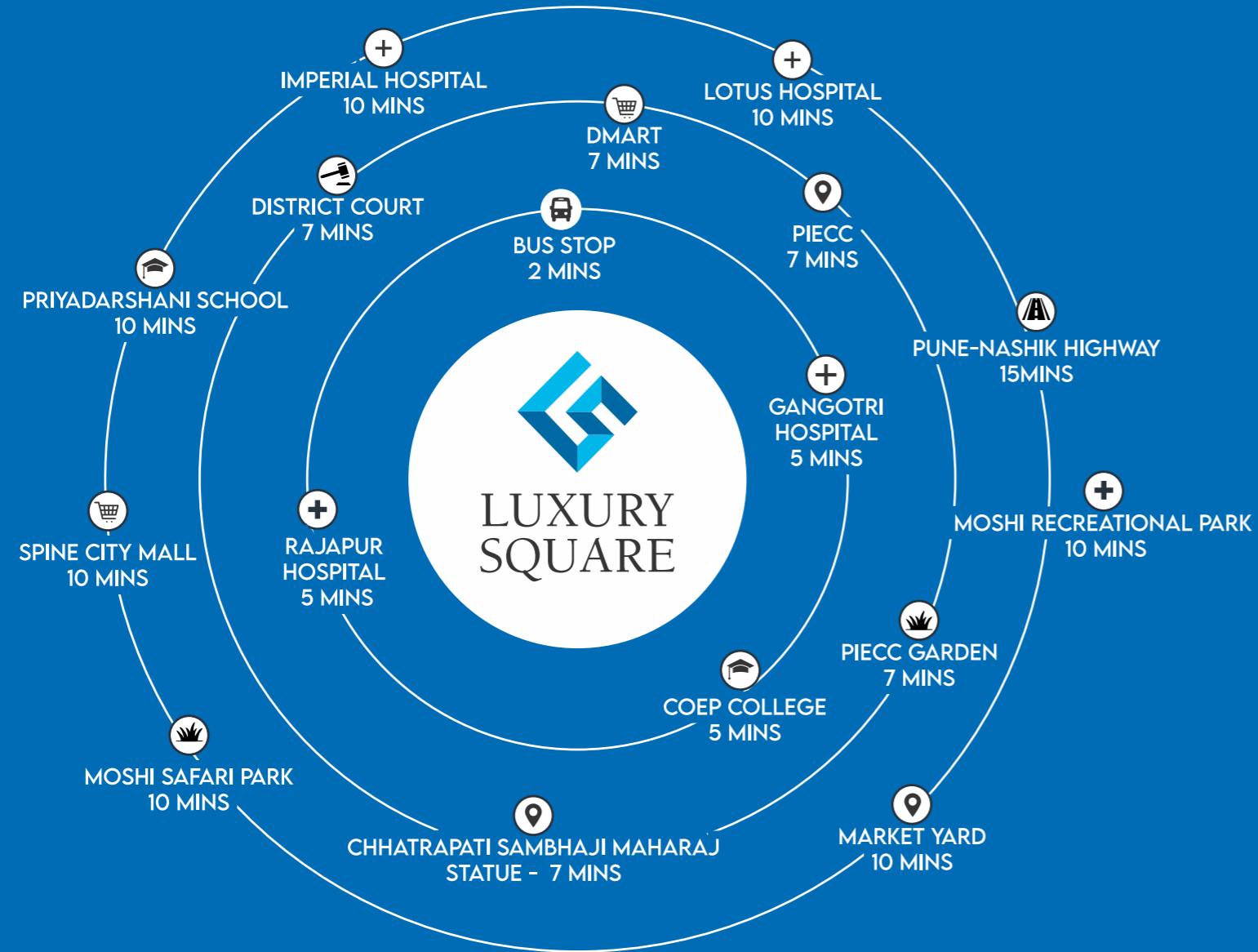


Image for representative purpose only



A P R O J E C T B Y



**Sanco Spaces**

*Your Dream Shapers...*

 **78419 81819**

Luxury Square, S. No. 606, Near COEP College,  
Off. Spine Road, Chikhali, Pune - 411062



Maha RERA No.  
**P52100031991**

[www.luxurysquare.com](http://www.luxurysquare.com)

Disclaimer: The sale is subject to the terms of application form and agreement to sale. The images included are artist's impression indicating the anticipated appearance of ongoing development. The information is presented as general information and no warranty is expressly or impliedly given that the completed development will comply in any degree with such artist's impression or anticipated appearance. Recipients are advised to apprise themselves of the necessary and relevant information of the project(s)/offer(s) prior to making any purchase decisions. The contents of this brochure are purely conceptual and have no legal binding on us. The developer reserves the right to amend the layout, number of floors, number of flats, sizes, colour scheme, elevation, amenities and specifications.