

CODENAME: DINK

UNVEILS HERE

CLOSER & FASTER TO EVERYTHING



- City's Major Landmarks
- Schools & Colleges
- IT & Corporate Hub/ Residential
- Hospitals
- Entertainment Avenues

Easy access

- Koregaon Park - 17 min (7.2 km)
- Camp - 18 min (6.7 km)
- Kalyani Nagar - 22 min (8.7 km)
- Kharadi - 26 min (9.6 km)
- Viman Nagar - 27 min (9.5 km)
- Wanowrie - 17 min (6.9 km)

- Pune International Airport - 30 min (11 km)
- Swargate Bus Stand - 23 min (8.8 km)

Malls & Multiplex

- Season's Mall - 5 min (1.2 km)
- Amanora Town Centre - 5 min (1.2 km)
- Phoenix Market city - 23 min (8.4 km)
- Inorbit mall - 22 min (8.1 km)

Hospital

- Sahyadri Super Specialty Hospital - 6 min (1.7 km)
- Noble Hospital - 5 min (1.5 km)
- Columbia Asia - 16 min (5.5 km)
- Sanjeevani Hospital - 8 min (2.9 km)
- Yash Hospital - 4 min (900 mtr)
- Medicare Hospital - Multi Speciality Hospital - 3 min. (600 mtr)
- Villoo Poonawalla Memorial Hospital - 5 min (1.5 km)

IT & ITES PARK

- Magarpatta Cyber City - 6 min (1.7 km)
- Planet IT - 2 min (450 mtr)
- EON free Zone - 21 min (7.6 km)
- World Trade Center - 21 min (7.6 km)
- SP Infocity - 14 min (5.4 km)
- Tata consultancy Services (TCS) - 1 min.
- Suzlon ONE Earth - 1 min.

Schools

- Amanora School - 9 min (2.8 km)
- The Hdfc School - 2 min. (300 mtr.)
- Wisdom world school - 5 min (1.2 km)
- VIBGYOR International school - 7 min (2.7 km)
- Pawar Public School - 7 min (1.8 km)

Hotels

- Four Points by Sheraton - 23 min (8.2 km)
- Novatel - 22 min (9.9 km)
- Hyatt - 26 min (9.6 km)
- Conrand - 25 min (9.9)
- Blue Diamond - 18 min (7.9 km)
- Amanora The Fern Hotels and Club - 7 min (1.8 km)
- Manali Resort - 21 min (8.5 km)

- Passport Office - 10 min (4.7 km)



MASTER PLAN

← To Magarpatta

To Amanora near road →



PRITHVI CAMPUS LAYOUT

Suzlon corporate campus

Club House: Proximus

Artistic Impresior

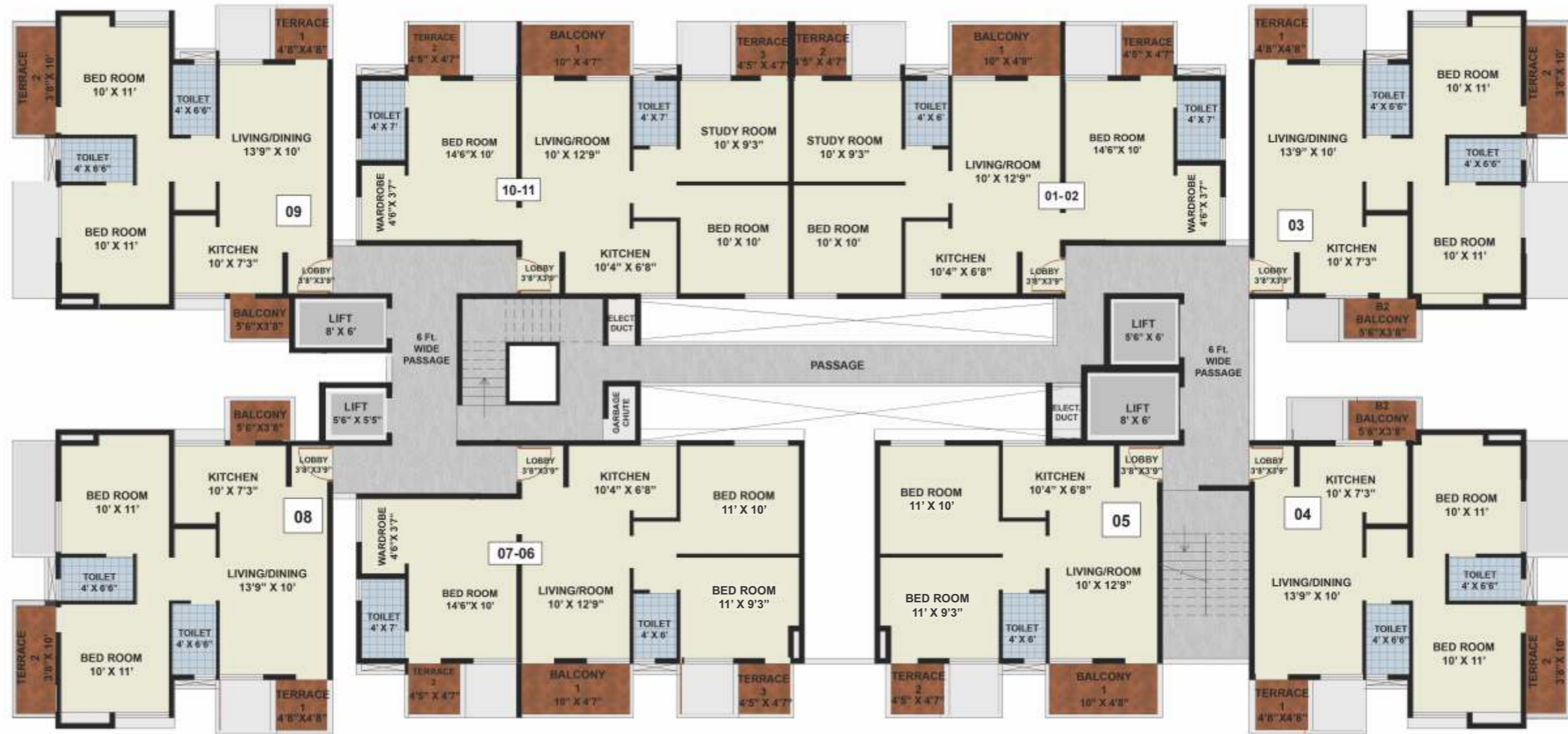
ODD FLOOR PLAN



| FLAT NO. | FLAT TYPE | CARPET AREA OF FLAT | BALCONY 1 | TERRACE 2 | TERRACE 3 | DRY BALCONY | TOTAL USABLE AREA OF FLAT INC. TERR & DRY, ALL |
|----------------------|-----------|---------------------|-----------|-----------|-----------|-------------|--|
| | | SQ. FT. | SQ. FT. | SQ. FT. | SQ. FT. | SQ. FT. | SQ. FT. |
| (101-102), (110-111) | 3BHK | 680.75 | 47.2 | 24.15 | | — | 753 |
| 103, 104, 108, 109 | 2BHK | 556 | 23.7 | — | — | — | 580 |
| 105, 106, 107 | 2BHK | 490.4 | 47.4 | — | — | — | 538 |



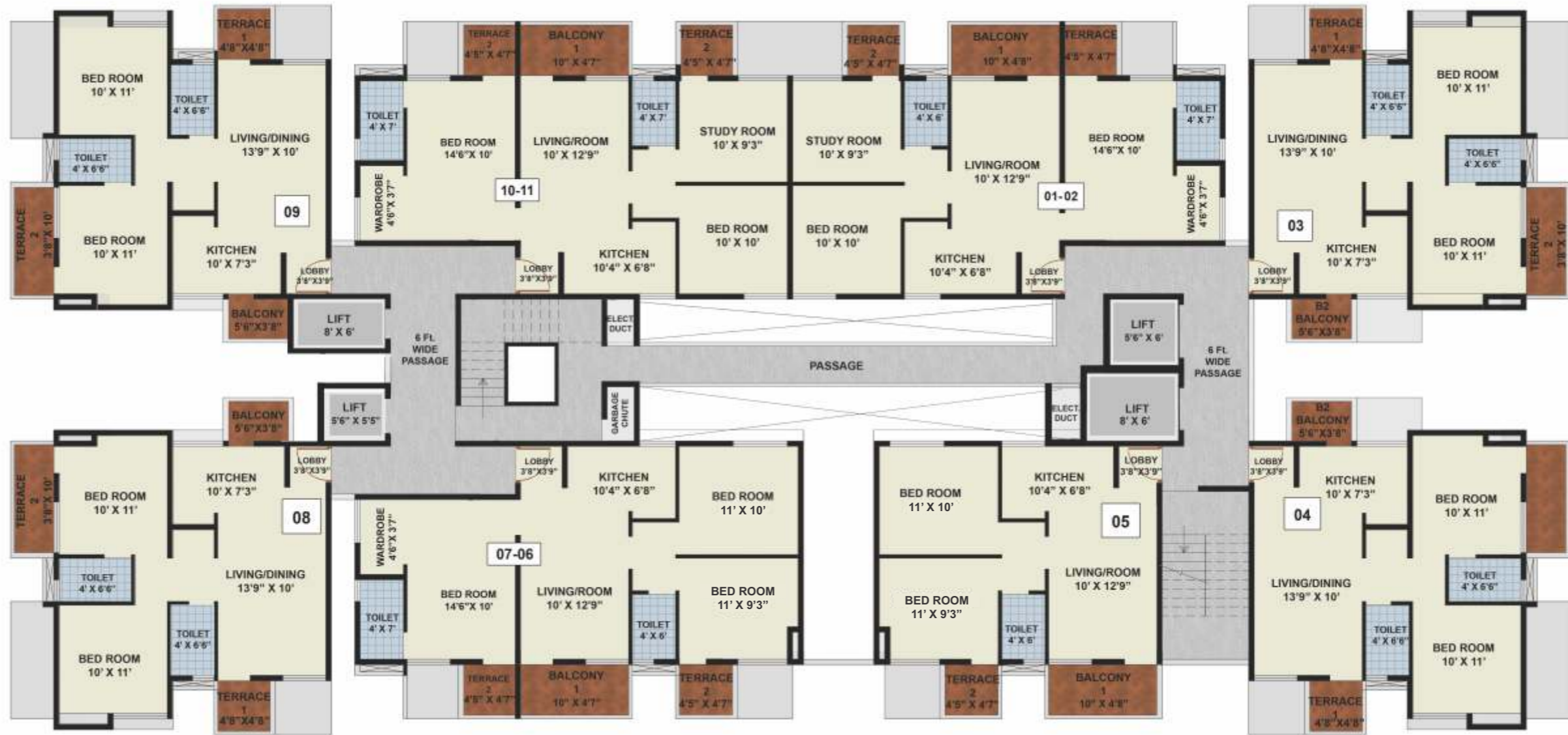
EVEN FLOOR PLAN



| FLAT NO. | FLAT TYPE | CARPET AREA OF FLAT | BALCONY 1 | TERRACE 2 | TERRACE 3 | DRY BALCONY | TOTAL USABLE AREA OF FLAT INC. TERR & DRY. ALL |
|--|-----------|---------------------|-----------|-----------|-----------|-------------|--|
| | | SQ. FT. | SQ. FT. | SQ. FT. | SQ. FT. | SQ. FT. | SQ. FT. |
| (201-202), (210-211), (401-402), (410-411), (601-602), (610-611), (1001-1002), (1010-1011), (1201-1202), (1210-1211), (1401-1402), (1410-1411), (1601-1602), (1610-1611), (1801-1802), (1810-1811), (2001-2002), (2010-2011) | 3RHK | 680.75 | 47.2 | 24.2 | 24.15 | — | 777 |
| 203, 204, 208, 209, 403, 404, 408, 409, 603, 604, 608, 609, 1003, 1004, 1008, 1009, 1203, 1204, 1208, 1209, 1403, 1404, 1408, 1409, 1603, 1604, 1608, 1609, 1803, 1804, 1808, 1809, 2003, 2004, 2008, 2009 | 2BHK | 556 | 37.5 | 23.7 | — | 23.7 | 641 |
| 205, 405, 605, 1005, 1205, 1405, 1605, 1805, 2005 | 2RHK | 490.4 | 47.4 | 24.2 | — | — | 562 |
| (206-207), (406-407), (606-607), (1006-1007), (1206-1207), (1406-1407), (1606-1607), (1806-1807), (2006-2007) | 3RHK | 698.15 | 47.2 | 24.2 | 24.15 | — | 794 |



ODD FLOOR PLAN



| FLAT NO. | FLAT TYPE | CARPET AREA OF FLAT | BALCONY 1 | TERRACE 2 | TERRACE 3 | DRY BALCONY | TOTAL USABLE AREA OF FLAT INC. TERR & DRY. ALL |
|--|-----------|---------------------|-----------|-----------|-----------|-------------|--|
| | | SQ. FT. | SQ. FT. | SQ. FT. | SQ. FT. | SQ. FT. | SQ. FT. |
| {301-302}, {310-311}, {501-502}, {510-511}, {701-702}, {710-711}, {901-902}, {910-911}, {1101-1102}, {1110-1111}, {1501-1502}, {1510-1511}, {1701-1702}, {1710-1711}, {1901-1902}, {1910-1911}, {2101-2102}, {2110-2111} | 1RHK | 680.75 | 47.2 | 24.15 | 24.15 | — | 777 |
| 303, 304, 308, 309, 503, 504, 508, 509, 703, 704, 708, 709, 903, 904, 908, 909, 1103, 1104, 1108, 1109, 1503, 1504, 1508, 1509, 1703, 1704, 1708, 1709, 1903, 1904, 1908, 1909, 2103, 2104, 2108, 2109 | 2BHK | 556 | 23.7 | — | — | 23.7 | 641 |
| 305, 505, 705, 905, 1105, 1505, 1705, 1905, 2105 | 2RHK | 490.4 | 24.2 | — | — | — | 562 |
| {306-307}, {506-507}, {706-707}, {906-907}, {1106-1107}, {1506-1507}, {1706-1707}, 1906-1907, {2106-2107} | 3RHK | 698.15 | 24.2 | 24.15 | 24.15 | — | 794 |



2BHK - 580 Sq Ft
1st FLOOR



3RHK 753 Sq Ft
1st FLOOR



STUDIO PLAN



| STUDIO | CARPET AREA | TERRACE AREA | TOTAL CARPET AREA |
|--------|---------------|--------------|-------------------|
| | 207.75 SQ. F. | 24.15 SQ. F. | 232 SQ. F. |

2BHK PLAN



| 2BHK FLAT | CARPET AREA | TERRACE AREA | | DRY BALCONY AREA | TOTAL CARPET AREA |
|-----------|-------------|--------------|--------------|------------------|-------------------|
| | | 1 | 2 | | |
| | 556 SQ. F. | 37.50 SQ. F. | 23.70 SQ. F. | 23.70 SQ. F. | 641 SQ. F. |

2RHK 1 PLAN



2RHK FLAT
1 and 11

| CARPET AREA | TERRACE AREA | | TOTAL CARPET AREA |
|-------------|--------------|--------------|-------------------|
| | 1 | 2 | |
| 473 SQ. F. | 45.20 SQ. F. | 24.20 SQ. F. | 545 SQ. F. |

3RHK PLAN



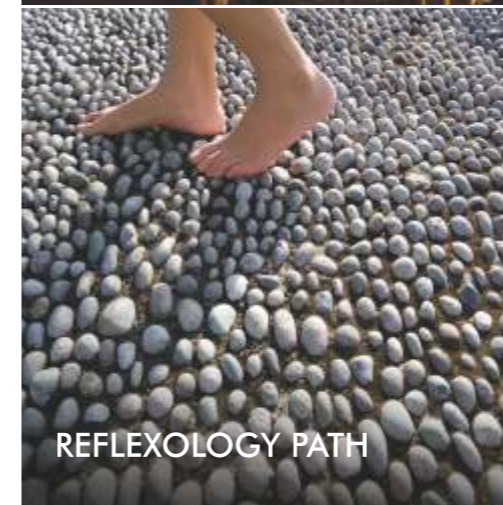
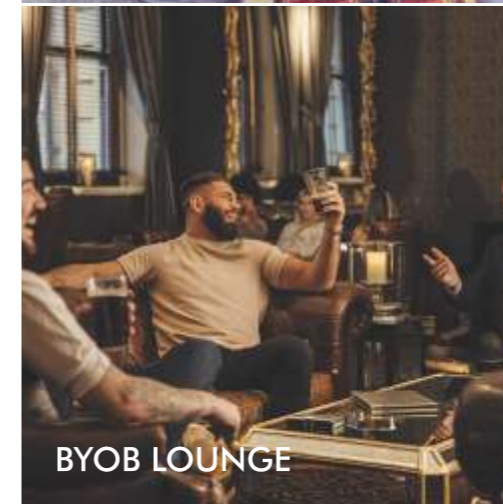
3RHK FLAT

| CARPET AREA | TERRACE AREA | | | TOTAL CARPET AREA |
|---------------|--------------|-------------|--------------|-------------------|
| | 1 | 2 | 3 | |
| 698.15 SQ. F. | 24.2 SQ. F. | 47.2 SQ. F. | 24.15 SQ. F. | 794 SQ. F. |



LIFESTYLE AMENITIES

- Clubhouse with Swimming pool
- Co-Working Lounge
- Library
- Well equipped Gymnasium
- Silent Disco
- 12-Seater Mini Theatre
- Yoga Arena
- BYOB Lounge
- Reflexology Path
- Sit-out Corner
- Indoor Game Room with Pool & Table Tennis
- Karaoke Room
- Play Station
- Multipurpose Banquet Area
- Society office
- Two level parking





Artistic Impression

LAUNCHING EXCLUSIVE
LIFE SPACE DESIGNED FOR
DINK COUPLES

UNVEILING

PRITHVI
PROXIMUS
LIVE CONNECTED

NEXT TO KALYAN JEWELLERS, MAGARPATTA



Prithvi Proximus MahaRERA No.: P52100021774
JUSTO realfintech private limited - MahaRERA No.: A51900020277
(<https://maharera.mahaonline.gov.in>)

A project by



Prithvi Proximus MahaRERA No.: P52100021774 (<https://maharera.mahaonline.gov.in>)